

|  |                        |   |
|--|------------------------|---|
| WAAS<br>CH <b>48830</b><br><b>W31A</b> | APP CRS<br><b>313°</b> | Rwy Idg <b>4994</b><br>TDZE <b>579</b><br>Apt Elev <b>588</b> |
|--|------------------------|---|

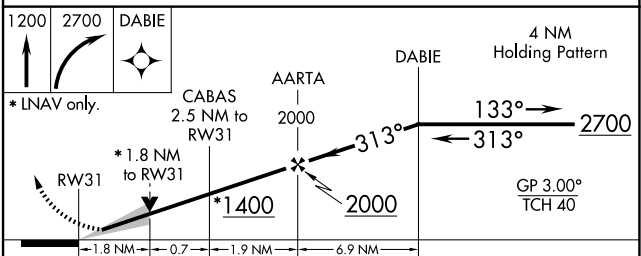
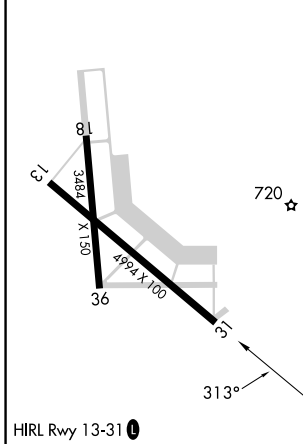
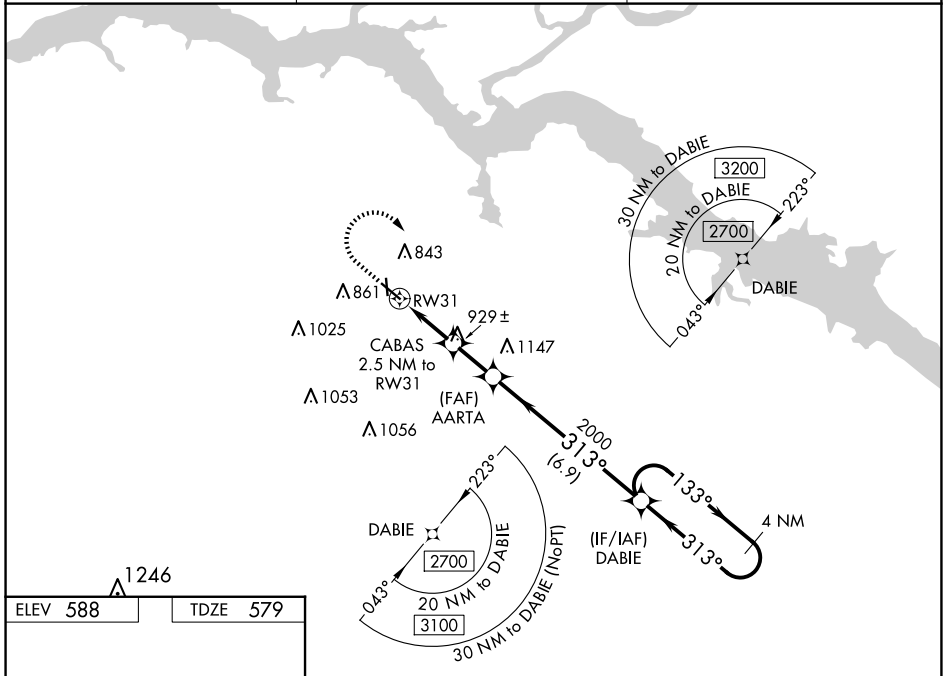
# RNAV (GPS) RWY 31

COURTLAND (9A.4)

**▼** For uncompensated Baro-VNAV systems, LNAV/VNAV NA below -16°C (4°F) or above 40°C (104°F). DME/DME RNP-0.3 NA. When local altimeter setting not received, use Muscle Shoals altimeter setting and increase all DAs 38 feet and all MDAs 40 feet, increase LNAV/VNAV all Cats and LNAV Cats C/D visibility 1/8 SM and Circling Cat D 1/4 SM. VDP and Baro-VNAV NA with Muscle Shoals altimeter setting. Night landing: Rwy 18 NA.

**▲** MISSED APPROACH: Climb to 1200 then climbing right turn to 2700 direct DABIE and hold.

|                           |   |                                 |
|---------------------------|---|---------------------------------|
| AWOS-3P<br><b>118.525</b> | HUNTSVILLE APP CON ★<br><b>118.05 239.0</b> | UNICOM<br><b>122.7 (CTAF) 0</b> |
|---------------------------|---|---------------------------------|



| CATEGORY     | A                     | B                     | C                     | D                             |
|--------------|-----------------------|-----------------------|-----------------------|-------------------------------|
| LPV DA       |                       | 779-3/4               | 200 (200-3/4)         |                               |
| LNAV/VNAV DA |                       | 938-1 1/4             | 359 (400-1 1/4)       |                               |
| LNAV MDA     | 1180-1                | 601 (600-1)           | 1180-1 3/4            | 601 (600-1 1/4)               |
| CIRCLING     | 1180-1<br>592 (600-1) | 1240-1<br>652 (700-1) | 1260-2<br>672 (700-2) | 1360-2 1/2<br>772 (800-2 1/2) |

SE-4, 23 JAN 2025 to 20 FEB 2025

SE-4, 23 JAN 2025 to 20 FEB 2025