

APP CRS	Rwy ldg	2621
297°	TDZE	6
	Apt Elev	6

RNAV (GPS) Z RWY 30

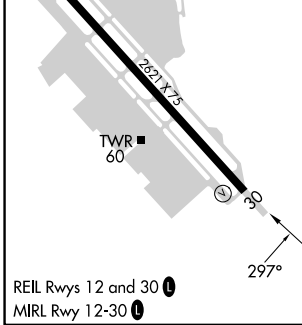
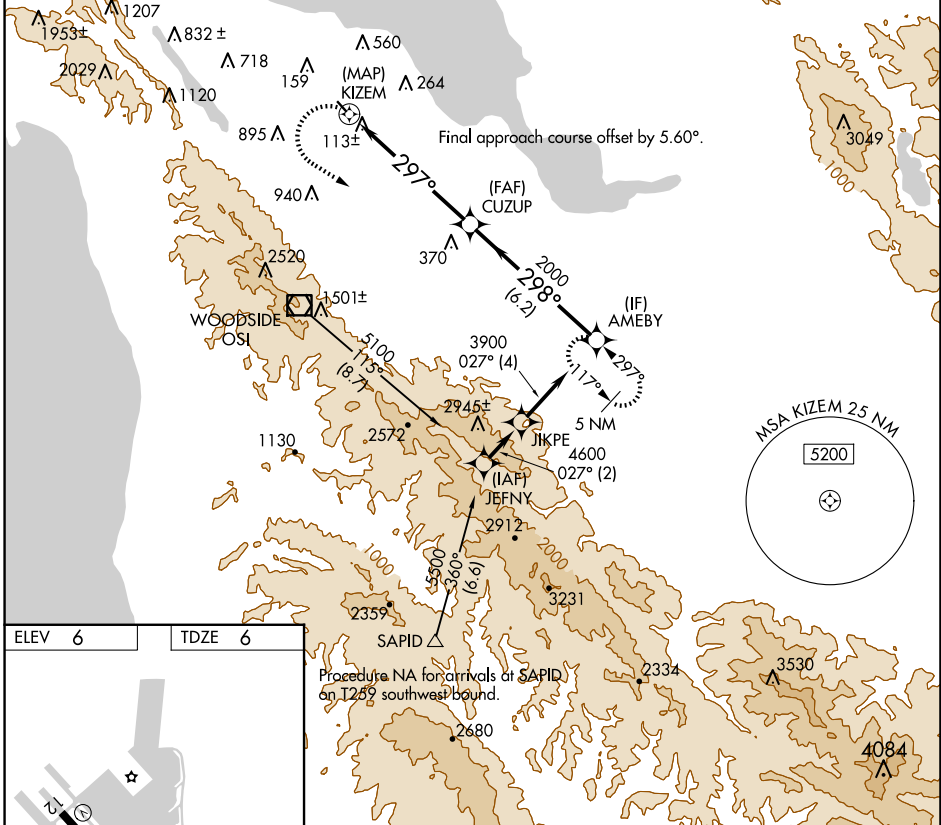
SAN CARLOS (SQL)

RNP APCH - GPS.

▽
▲ Rwy 30 helicopter visibility reduction below 3/4 SM NA.

MISSED APPROACH: Climbing left turn to 5400 direct AMEBY and hold, continue climb-in-hold to 5400. Missed approach requires minimum climb of 340 feet per NM to 1300; if unable to meet climb gradient, see RNAV (GPS) Y RWY 30.

ATIS 125.9	NORCAL APP CON 133.95 317.6	SAN CARLOS TOWER ★ 119.0 (CTAF) 326.2	GND CON 121.6	UNICOM 122.95
----------------------	---------------------------------------	---	-------------------------	-------------------------



ELEV 6	TDZE 6	Procedure NA for arrivals at SAPID on 125° southwest bound.		
5400	AMEBY	VGSI and descent angles not coincident (VGSI Angle 3.00/TCH 25).		
		<p>AMEBY</p> <p>CUZUP</p> <p>KIZEM</p> <p>3.05° TCH 40</p> <p>297°</p> <p>298°</p> <p>2000</p> <p>3900</p> <p>0.2 5.9 NM 6.2 NM</p>		
CATEGORY	A	B	C	D
LNAV MDA	900-1¼ 894 (900-1¼)		NA	

SW-2, 23 JAN 2025 to 20 FEB 2025

SW-2, 23 JAN 2025 to 20 FEB 2025