

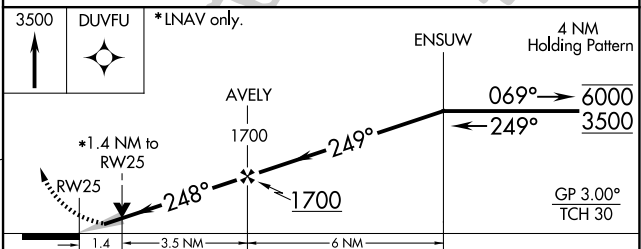
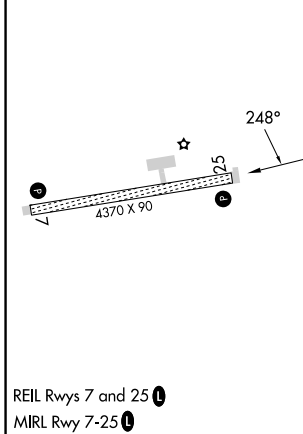
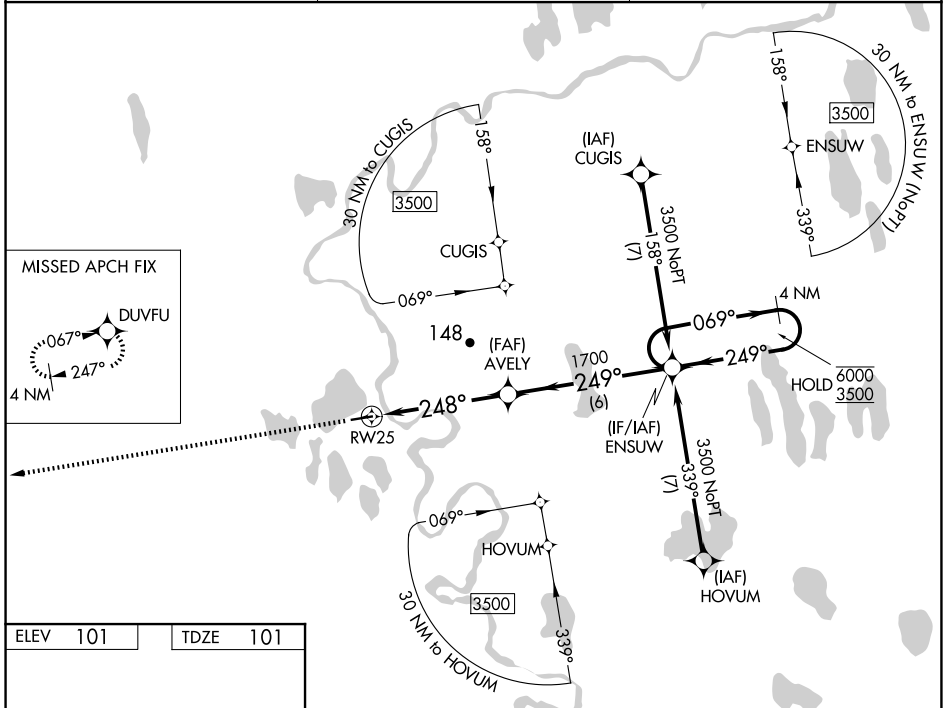
WAAS CH <b>53543</b> <b>W25A</b>	APP CRS <b>248°</b>	Rwy Idg TDZE <b>101</b> Apt Elev <b>101</b>	<b>4370</b>
--	------------------------	---	-------------

# RNAV (GPS) RWY 25

ATQASUK EDWARD BURNELL SR MEML (ATK)(PATQ)

RNP APCH.	MISSED APPROACH: Climb to 3500 direct DUVFU and hold, continue climb-in-hold to 3500.
<p>For uncompensated Baro-VNAV systems, LNAV/VNAV NA below -22°C or above 54°C.</p>	

AWOS-3P <b>119.925</b>	ANCHORAGE CENTER <b>135.3 239.25</b>	CTAF <b>122.9</b>
---------------------------	---	----------------------



CATEGORY	A	B	C	D
LPV DA		351-1	250 (300-1)	
LNAV/VNAV DA		351-1	250 (300-1)	
LNAV MDA	560-1	459 (500-1)	560-1 $\frac{3}{8}$	459 (500-1 $\frac{3}{8}$ )
CIRCLING	560-1	459 (500-1)	560-1 $\frac{1}{2}$ 459 (500-1 $\frac{1}{2}$ )	700-2 599 (600-2)

REIL Rwy 7 and 25   
MIRL Rwy 7-25

ATQASUK, ALASKA  
Amdt 2 31DEC20

ATQASUK EDWARD BURNELL SR MEML (ATK)(PATQ)  
70°28'N-157°26'W

# RNAV (GPS) RWY 25

AK, 26 DEC 2024 to 20 FEB 2025

AK, 26 DEC 2024 to 20 FEB 2025