

| | | | |
|---|------------------------|---|--|
| VOR/DME GEE 108.2 Chan 19 | APP CRS 085° | Rwy Idg TDZE Apt Elev 814 | N/A N/A 814 |
|---|------------------------|---|--|

VOR-A
CANANDAIGUA (IUA)

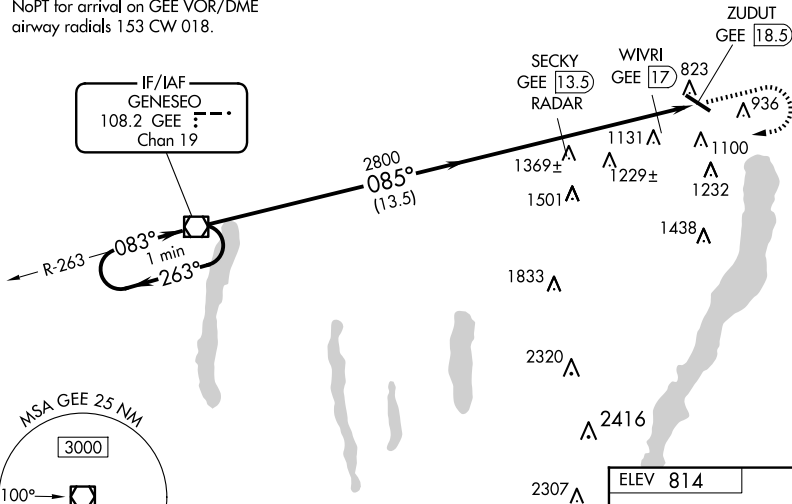
DME or RADAR required.

When local altimeter setting not received, use Rochester altimeter setting and increase all MDAs 100 feet and Circling visibility all Cats ¼ SM, increase WIVRI Fix Circling minimums visibility Cat C ½ SM.

MISSED APPROACH: Climb to 2000 then climbing right turn to 3500 direct GEE VOR/DME and hold.

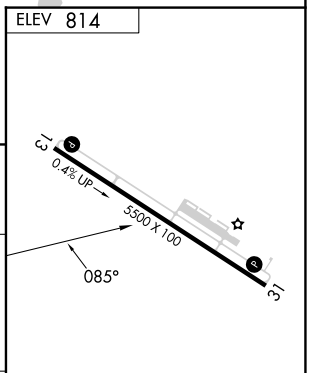
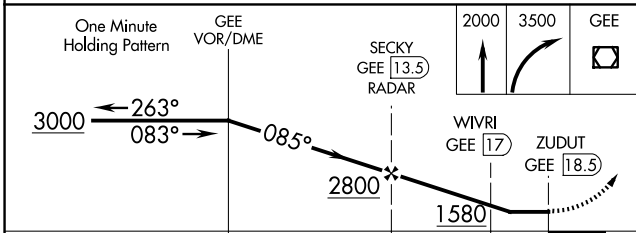
| | | |
|---------------------------|--|---------------------------------|
| AWOS-3P 118.675 | ROCHESTER APP CON 119.55 269.6 | UNICOM 122.8 (CTAF) 0 |
|---------------------------|--|---------------------------------|

NoPT for arrival on GEE VOR/DME
airway radials 153 CW 018.



NE-2, 23 JAN 2025 to 20 FEB 2025

NE-2, 23 JAN 2025 to 20 FEB 2025



| CATEGORY | A | B | C | D | | | | | | | | | | | | | |
|--------------------|--------|-------------|---------------------------|------|--|-------|----|----|-----|-----|-----|---------|------|------|------|------|------|
| CIRCLING | 1580-1 | 766 (800-1) | 1580-2 ¼ 766 (800-2 ¼) | NA | MIRL Rwy 13-31 REIL Rws 13 and 31 | | | | | | | | | | | | |
| WIVRI FIX MINIMUMS | | | | | FAF to MAP 5 NM | | | | | | | | | | | | |
| CIRCLING | 1500-1 | 686 (700-1) | 1540-2 726 (800-2) | NA | <table border="1"> <tr> <td>Knots</td> <td>60</td> <td>90</td> <td>120</td> <td>150</td> <td>180</td> </tr> <tr> <td>Min:Sec</td> <td>5:00</td> <td>3:20</td> <td>2:30</td> <td>2:00</td> <td>1:40</td> </tr> </table> | Knots | 60 | 90 | 120 | 150 | 180 | Min:Sec | 5:00 | 3:20 | 2:30 | 2:00 | 1:40 |
| Knots | 60 | 90 | 120 | 150 | 180 | | | | | | | | | | | | |
| Min:Sec | 5:00 | 3:20 | 2:30 | 2:00 | 1:40 | | | | | | | | | | | | |