

VOR/DME PIH 112.6 Chan 73	APP CRS 016°	Rwy Idg TDZE Apt Elev 4492	N/A N/A 4492
---	------------------------	---	---

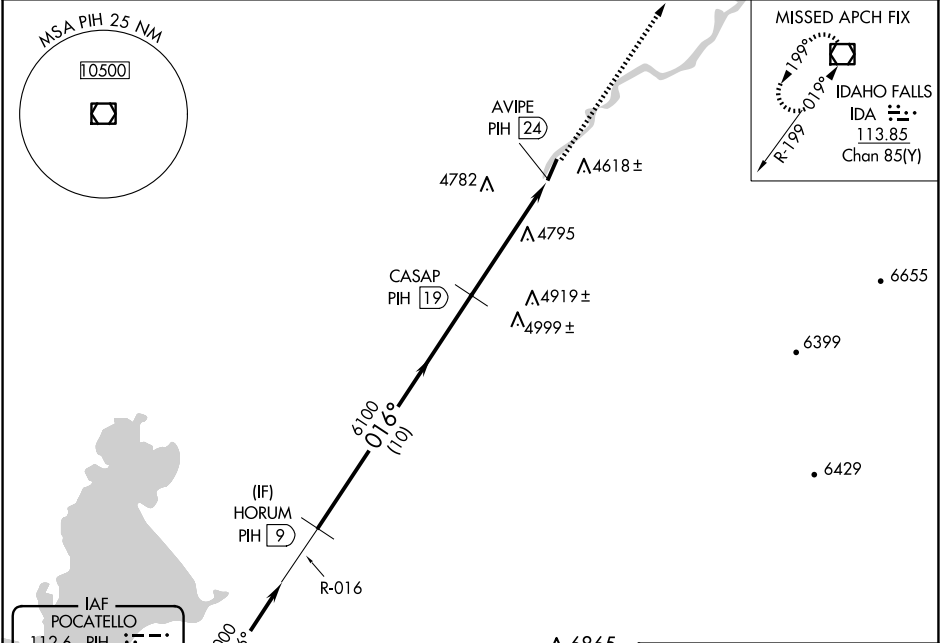
VOR/DME-C
MCCARLEY FLD (U02)

▼ Use Pocatello altimeter setting, when not received use Idaho Falls altimeter setting. Helicopter visibility reduction below 1 SM NA.

▲ NA MISSED APPROACH: Climb to 7000 direct IDA VOR/DME and hold.

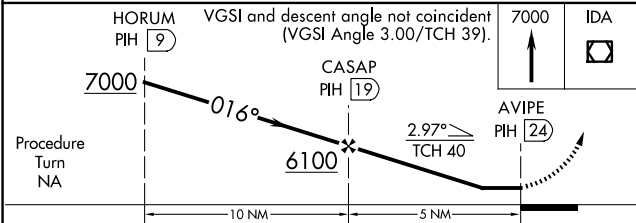
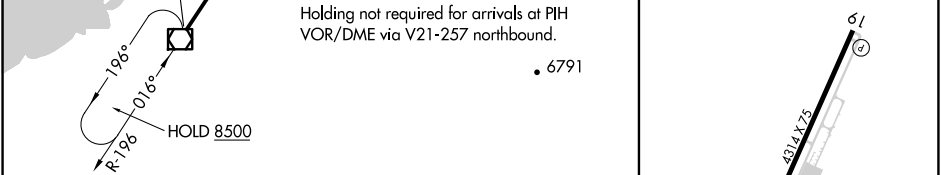
SALT LAKE CITY CENTER **128.35 239.25**

UNICOM **122.8** (CTAF)

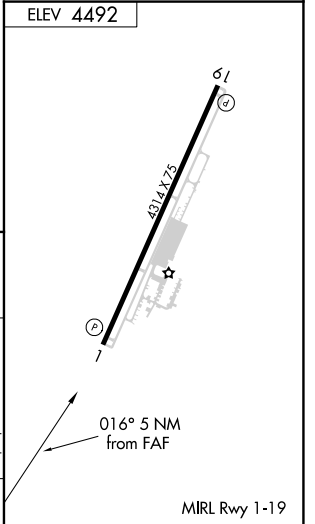


ELEV 4492

Holding not required for arrivals at PIH VOR/DME via V21-257 northbound.



CATEGORY	A	B	C	D
CIRCLING	5460-1¼ 968 (1000-1¼)	5460-1½ 968 (1000-1½)	5460-3 968 (1000-3)	5900-3 1408 (1500-3)



NW-1, 23 JAN 2025 to 20 FEB 2025

NW-1, 23 JAN 2025 to 20 FEB 2025