

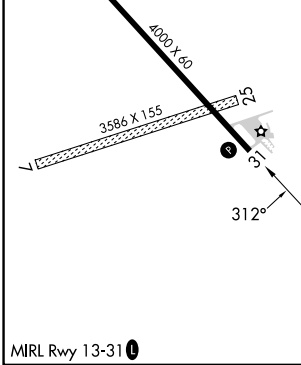
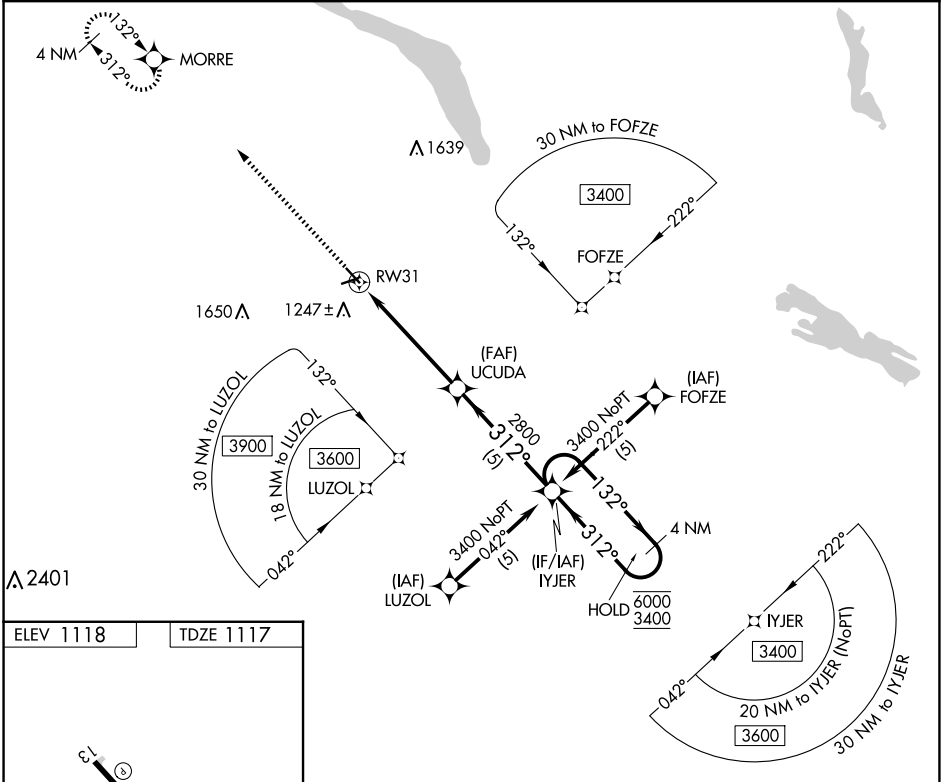
APP CRS	Rwy Idg	4000
312°	TDZE	1117
	Apt Elev	1118

RNAV (GPS) RWY 31

MILBANK MUNI (1D1)

RNP APCH - GPS.	MISSED APPROACH: Climb to 3400 direct MORRE and hold.
Rwy 31 helicopter visibility reduction below 3/4 SM NA. Circling Rwy 7, 25 NA. When local altimeter setting not received, use Ortonville altimeter setting and increase all MDAs 20 feet. VDP NA when using Ortonville Muni/Martinson Fld altimeter setting.	

AWOS-3P 118.9	MINNEAPOLIS CENTER 128.5 306.2	AUNICOM 122.8 (CTAF) 0
-------------------------	------------------------------------------	----------------------------------



ELEV 1118	TDZE 1117			
3400 MORRE	Visual Segment - Obstacles.			
UCUDA	IYJER 4 NM Holding Pattern			
1.8 NM to RW31	132° → 6000			
	← 312° 3400			
1.8 NM	3.4 NM	5 NM		
CATEGORY	A	B	C	D
LNAV MDA	1720-1	603 (700-1)	NA	
CIRCLING	1720-1	602 (700-1)	NA	

NC-1, 23 JAN 2025 to 20 FEB 2025

NC-1, 23 JAN 2025 to 20 FEB 2025