

APP CRS 078°	Rwy Idg 3303
	TDZE -182
	Apt Elev -182

RNAV (GPS) RWY 8

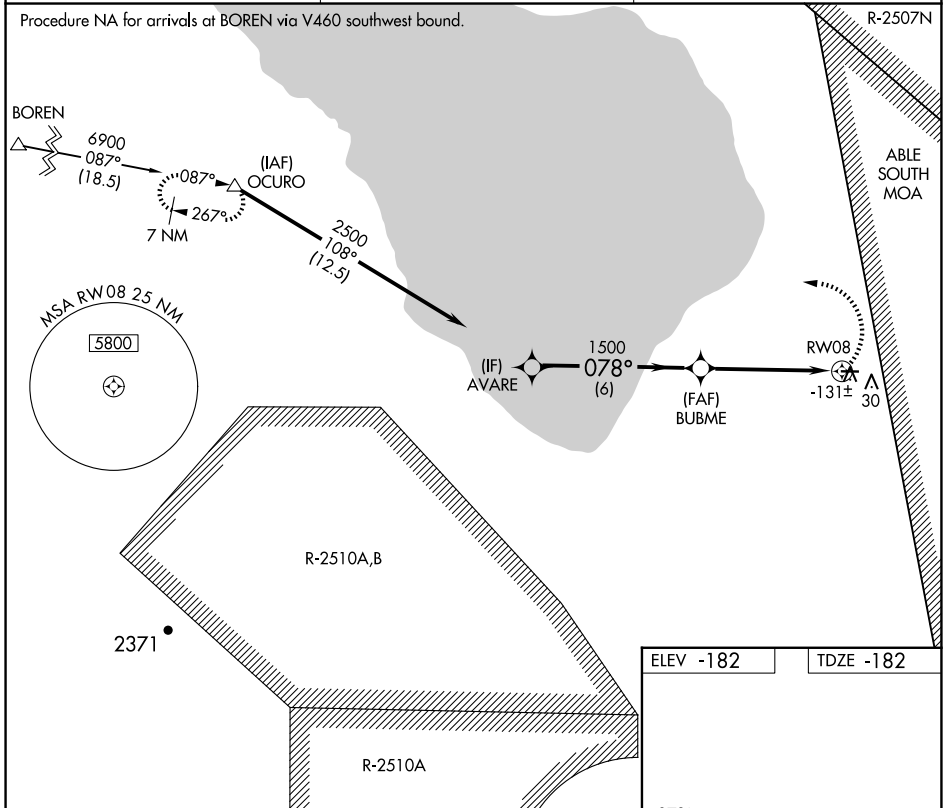
CLIFF HATFIELD MEML (CLR)

▼ DME/DME RNP-0.3 NA. Procedure NA at night.
▲ NA Visibility reduction by helicopters NA.
 Use Imperial altimeter setting, when not received, procedure NA.

MISSED APPROACH: Climbing left turn to 7300 direct OCURO and hold, continue climb-in-hold to 7300.

IPL ASOS 132.175	YUMA CERAP 128.55 292.2	CTAF 122.9
----------------------------	-----------------------------------	----------------------

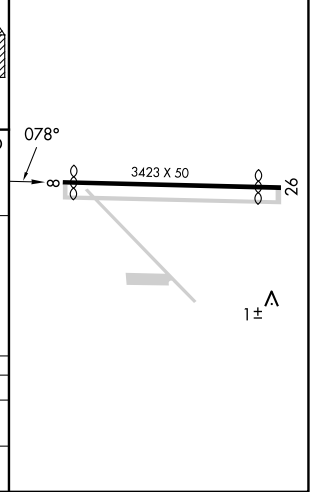
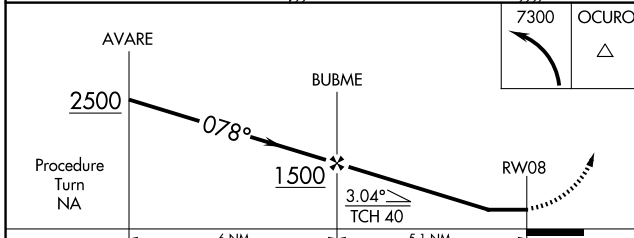
Procedure NA for arrivals at BOREN via V460 southwest bound.



SW-3, 23 JAN 2025 to 20 FEB 2025

SW-3, 23 JAN 2025 to 20 FEB 2025

ELEV -182	TDZE -182
-----------	-----------



CATEGORY	A	B	C	D
LNNAV MDA	300-1	482 (500-1)	300-1¼ 482 (500-1¼)	NA
CIRCLING	440-1	622 (700-1)	440-1¼ 622 (700-1¼)	NA