

APP CRS	Rwy Idg	<b>2729</b>
<b>188°</b>	TDZE	<b>196</b>
	Apt Elev	<b>196</b>

# RNAV (GPS) RWY 19

SOUTH ALBANY (4B0)

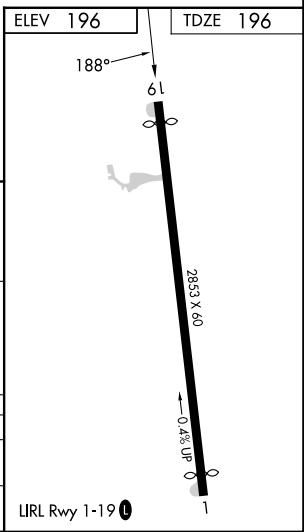
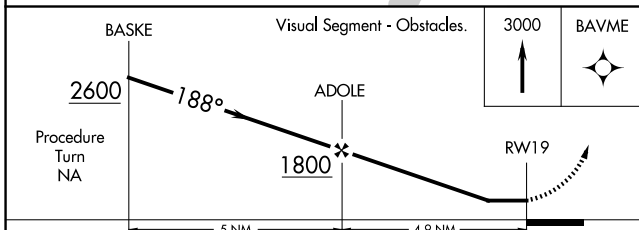
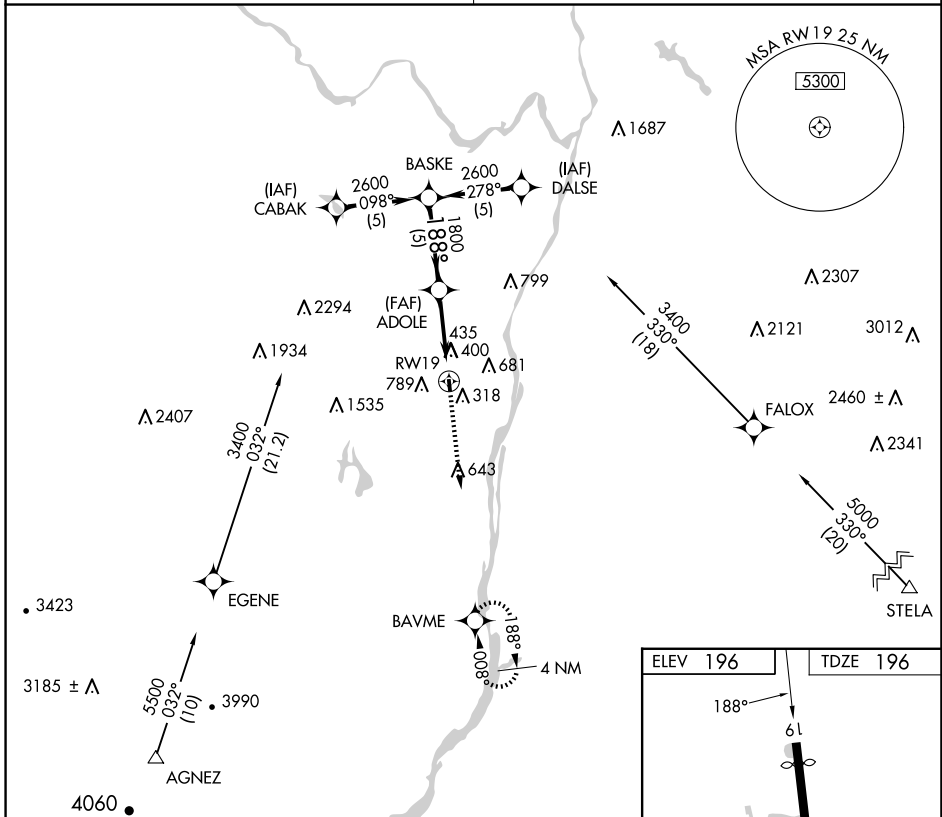
RNP APCH.

MISSED APPROACH: Climb to 3000 direct BAVME WP and hold.

▼ Use Albany Intl altimeter setting. Procedure NA at night.  
 ▲ NA Rwy 19 helicopter visibility reduction below 1 SM NA.

ALBANY APP CON  
**118.05 263.075**

CTAF  
**122.9 0**



CATEGORY	A	B	C	D
LNAV MDA	740-1	544 (600-1)	NA	
CIRCLING	840-1 644 (700-1)	1180-1½ 984 (1000-1½)	NA	

NE-2, 23 JAN 2025 to 20 FEB 2025

NE-2, 23 JAN 2025 to 20 FEB 2025