

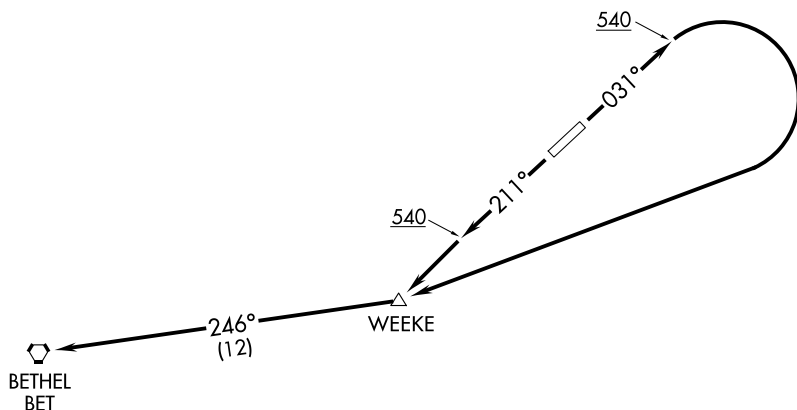
(AKIAK1.BET) 18032

# AKIAK ONE DEPARTURE (OBSTACLE) (RNAV)

AL-9746 (FAA)

AKIAK (AKI) (PFAK)  
AKIAK, ALASKA

ANCHORAGE CENTER  
125.2 372.0  
CTAF  
122.9



### TAKEOFF MINIMUMS

Rwy 3, 21: Standard.

NOTE: GPS required.

NOTE: RNAV 1.

NOTE: Chart not to scale.

### DEPARTURE ROUTE DESCRIPTION

TAKEOFF RUNWAY 3: Climb heading 031° to 540, then right turn direct WEEKE, thence . . . .

TAKEOFF RUNWAY 21: Climb heading 211° to 540, then direct WEEKE, thence . . . .

. . . . via 246° track to BET VORTAC. Continue climb to MEA for route of flight.

# AKIAK ONE DEPARTURE (OBSTACLE) (RNAV)

(AKIAK1.BET) 27AUG09

AKIAK, ALASKA  
AKIAK (AKI) (PFAK)

AK, 26 DEC 2024 to 20 FEB 2025

AK, 26 DEC 2024 to 20 FEB 2025