

WAAS CH <b>56540</b> <b>W28A</b>	APP CRS <b>283°</b>	Rwy Idg TDZE <b>4230</b> Apt Elev <b>4230</b>	<b>6000</b> <b>4230</b> <b>4230</b>
--	------------------------	---	---

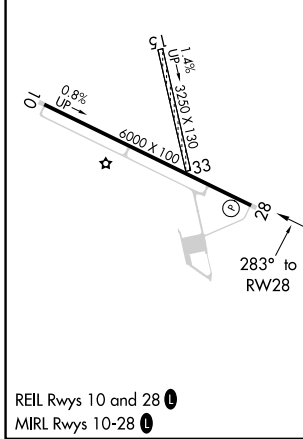
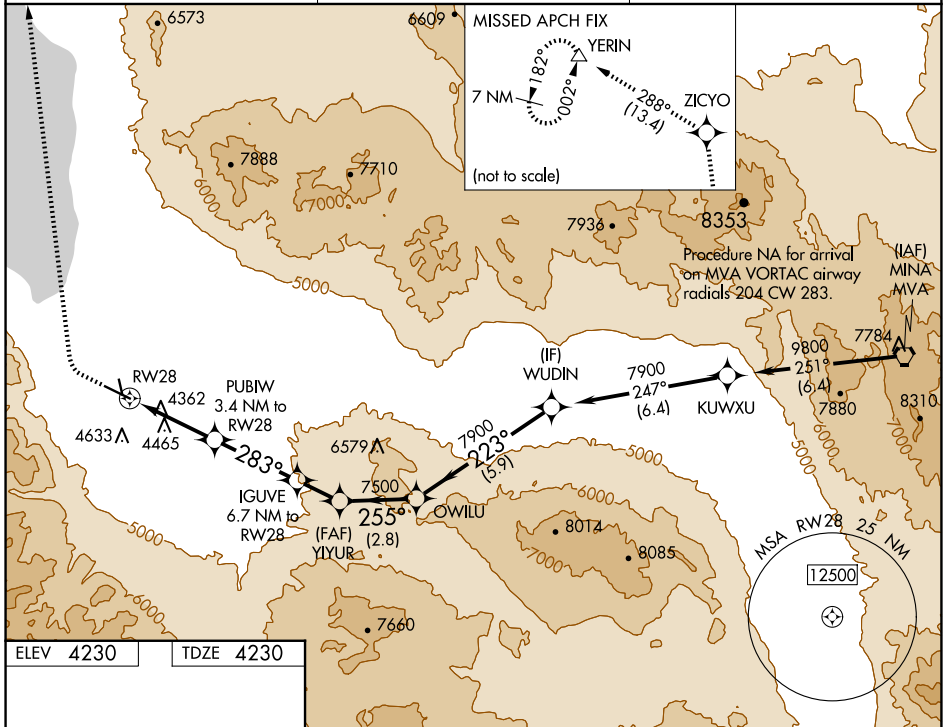
# RNAV (GPS) RWY 28

HAWTHORNE INDUSTRIAL (HTH)

**⚠** Circling NA to Rws 15 and 33. When local altimeter setting not received, procedure NA. Circling NA south of Rwy 10-28. DME/DME RNP-0.3 NA. Rwy 28 helicopter visibility reduction below ¼ SM NA.

**⚠** MISSED APPROACH: Climb to 4750 then climbing right turn to 10000 direct ZICYO and on track 288° to YERIN and hold.

AWOS-3 <b>120.225</b>	OAKLAND CENTER <b>125.75 284.65</b>	UNICOM <b>122.8 (CTAF) 0</b>
--------------------------	--	---------------------------------



4750	10000	ZICYO	tr 288°	YERIN	VGSI and descent angles not coincident (VGSI Angle 3.00/TCH 49).		
					YIYUR	OWILU	WUDIN
					PUBIW 3.4 NM to RWY 28	IGUVE 6.7 NM to RWY 28	
					1.1 NM to RWY 28		
					3.60° TCH 49		
					5580	6840	7500
					1.1 NM	2.3 NM	3.3 NM
					1.7 NM	2.8 NM	5.9 NM
CATEGORY	A	B	C	D			
LP MDA	4620-1	390 (400-1)	4620-1½	390 (400-1½)	NA		
LNAV MDA	4720-1	490 (500-1)	4720-1¾	490 (500-1¾)	NA		
<b>C</b> CIRCLING	4720-1	490 (500-1)	5680-3	1450 (1500-3)	NA		

SW-4, 23 JAN 2025 to 20 FEB 2025

SW-4, 23 JAN 2025 to 20 FEB 2025