

APP CRS	Rwy Idg	N/A
340°	TDZE	N/A
	Apt Elev	723

# RNAV (GPS)-B

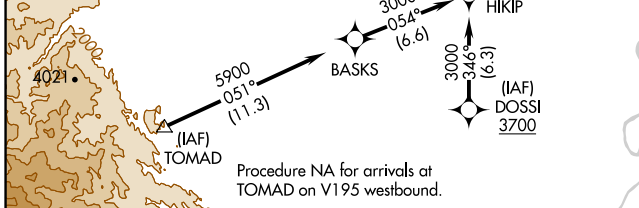
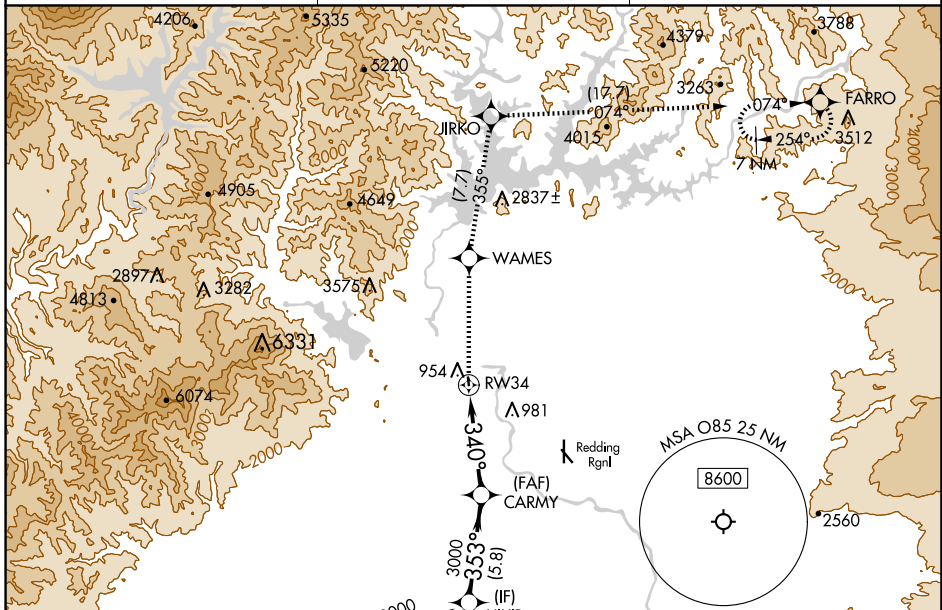
BENTON FLD (O85)

RNP APCH - GPS.

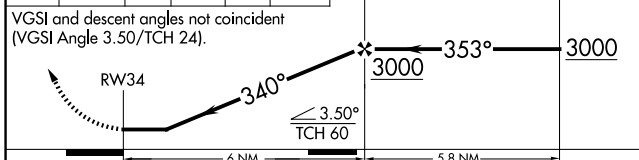
Procedure NA at night. Rwy 16, 34 helicopter visibility reduction below 1 SM NA. When local altimeter setting not received, use Redding Rgnl altimeter setting and increase all MDAs 60 feet.

MISSED APPROACH: Climb to 10000 direct WAMES and on track 355° to JIRKO and on track 074° to FARRO and hold, continue climb-in-hold to 10000.

AWOS-2 <b>118.675</b>	OAKLAND CENTER <b>132.2 350.3</b>	UNICOM <b>122.8 (CTAF)</b>
--------------------------	--------------------------------------	-------------------------------



10000	WAMES	tr	JIRKO	tr	FARRO	CARMY	HIKIP
↑	◆	355°	◆	074°	◆		



CATEGORY	A	B	C	D
CIRCLING	1900-1¼ 1177 (1200-1¼)	1900-1½ 1177 (1200-1½)	NA	

SW-2, 23 JAN 2025 to 20 FEB 2025

SW-2, 23 JAN 2025 to 20 FEB 2025