

VORTAC ROD 117.5 Chan 122	APP CRS 249°	Rwy Idg TDZE 1122 Apt Elev 1122	5000
---	------------------------	---	-------------

VOR RWY 25
BELLEVILLE RGNL (E.D.J)

DME required.

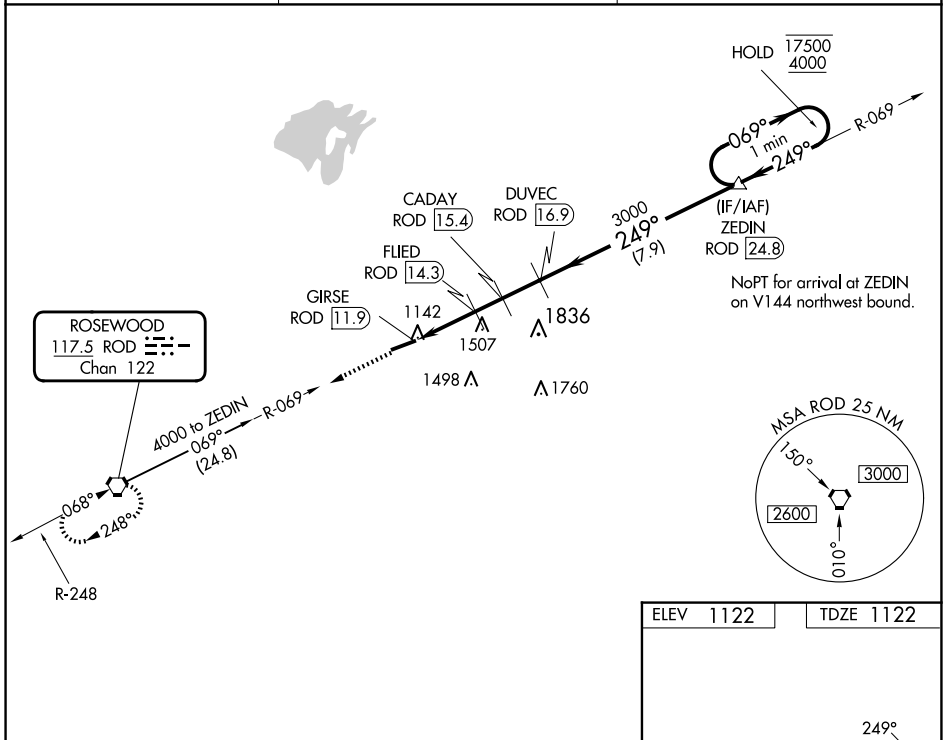
⚠ Rwy 25 helicopter visibility reduction below 3/4 SM NA. When local altimeter setting not received, use James M Cox Dayton Intl altimeter setting and increase all MDAs 100 feet, and S-25 visibility Cats C and D 1/2 SM, and Circling visibility Cats A, C, and D 1/4 SM. VDP NA when using James M Cox Dayton Intl altimeter setting.

MISSED APPROACH: Climb to 3000 on ROD R-069 to ROD VORTAC and hold.

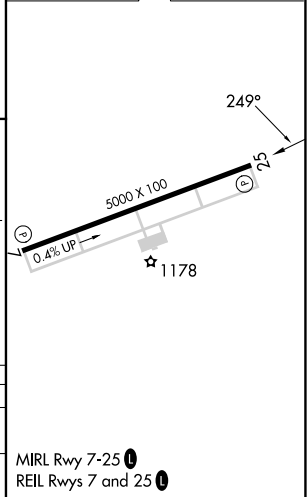
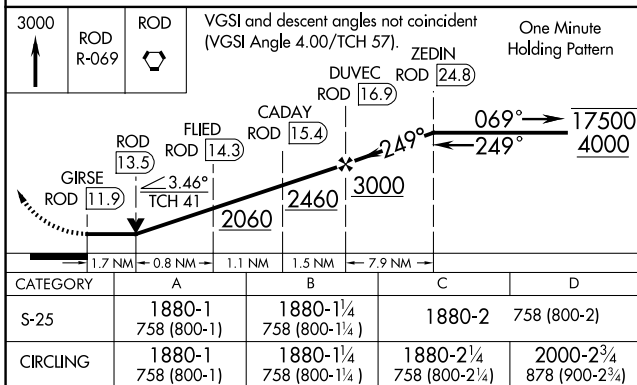
AWOS-3
118.075

COLUMBUS APP CON
134.45 294.5

UNICOM
122.8 (CTAF)



ELEV 1122	TDZE 1122
-----------	-----------



EC-2, 23 JAN 2025 to 20 FEB 2025

EC-2, 23 JAN 2025 to 20 FEB 2025