

WAAS CH <b>56529</b> <b>W07A</b>	APP CRS <b>067°</b>	Rwy Idg TDZE <b>3490</b> Apt Elev <b>3490</b>	<b>5099</b>
--	------------------------	---	-------------

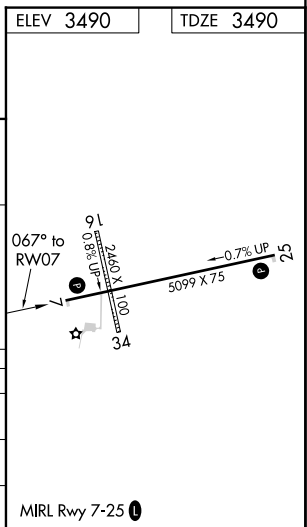
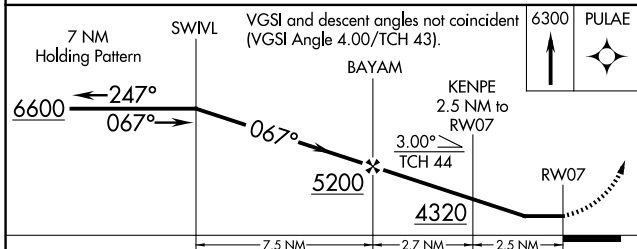
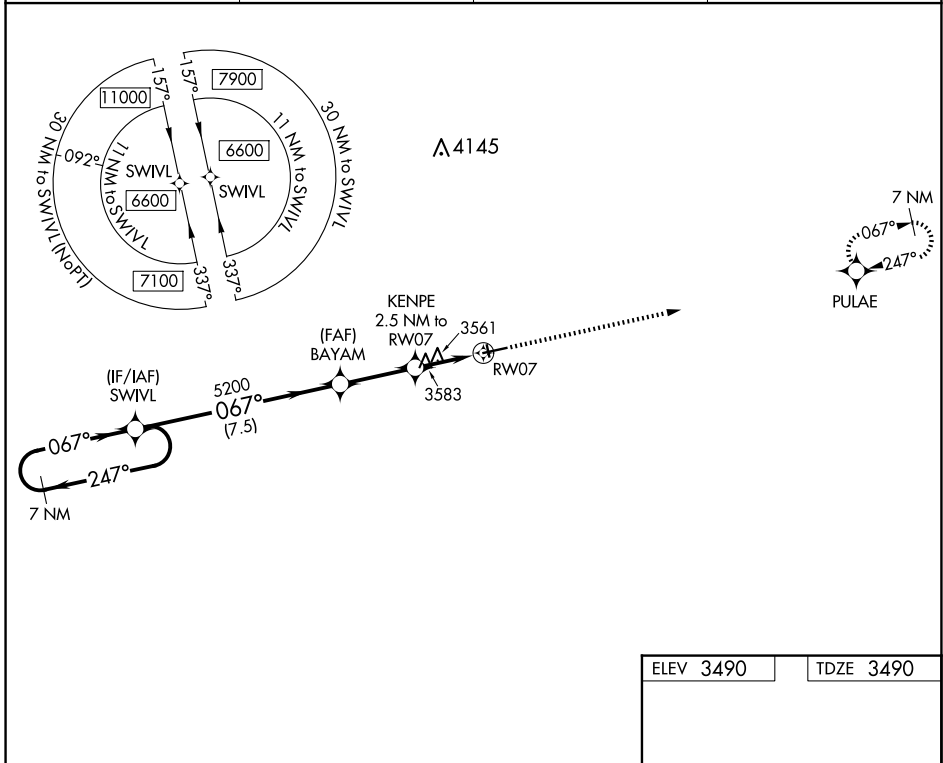
# RNAV (GPS) RWY 7

ROUNDUP (RPX)

**NA** Use Billings altimeter setting, when not received, procedure NA.  
When VGSI inop, Straight-in/Circling Rwy 7 procedure NA at night.  
DME/DME RNP-0.3 NA. Visibility reduction by helicopters NA.

MISSED APPROACH: Climb to 6300 direct PULAE and hold.

BIL ASOS <b>126.3</b>	SALT LAKE CENTER <b>126.85 305.2</b>	UNICOM <b>122.8 (CTAF)</b>	<b>122.7 0</b>
--------------------------	---	-------------------------------	----------------



CATEGORY	A	B	C	D
LP MDA	3940-1 450 (500-1)		3940-1 $\frac{3}{8}$ 450 (500-1 $\frac{3}{8}$ )	
LNAV MDA	3960-1 470 (500-1)		3960-1 $\frac{3}{8}$ 470 (500-1 $\frac{3}{8}$ )	
CIRCLING	4000-1 510 (600-1)		4140-1 $\frac{3}{4}$ 650 (700-1 $\frac{3}{4}$ )	4340-2 $\frac{3}{4}$ 850 (900-2 $\frac{3}{4}$ )

NW-1, 23 JAN 2025 to 20 FEB 2025

NW-1, 23 JAN 2025 to 20 FEB 2025