

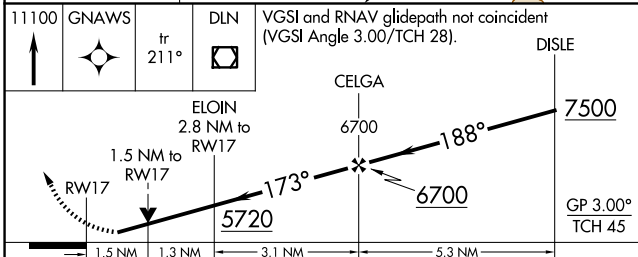
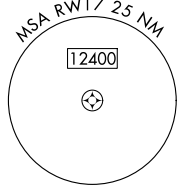
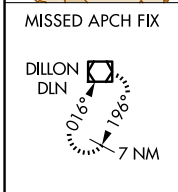
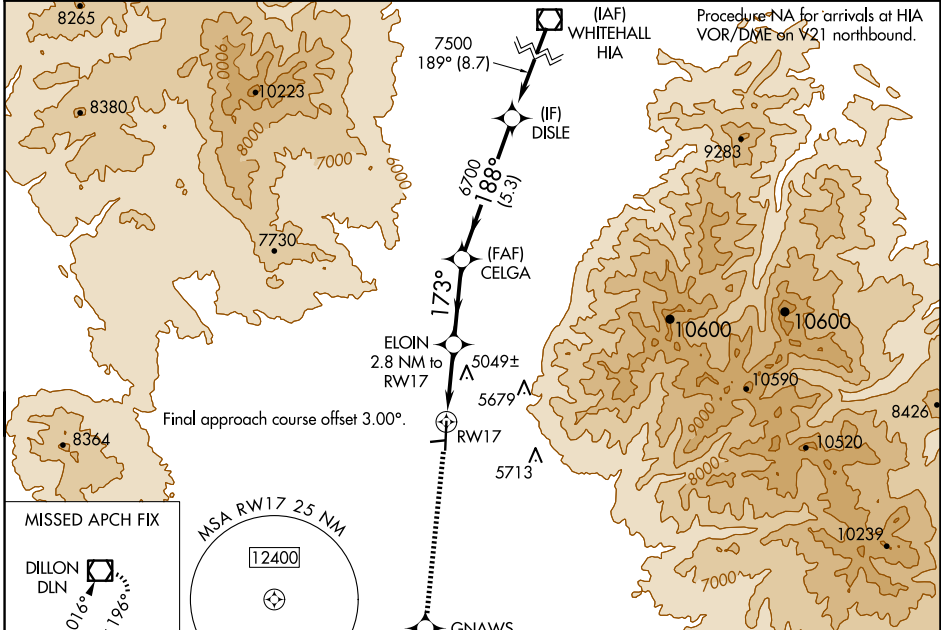
WAAS CH 93840 W17A	APP CRS 173°	Rwy Idg TDZE Apt Elev	6000 4789 4789
--	------------------------	-----------------------------	---

RNAV (GPS) RWY 17

RUBY VALLEY FLD (RVF)

RNP APCH - GPS.	MISSED APPROACH: Climb to 11100 direct GNAWS and on track 211° to DLN VOR/DME and hold, continue climb-in-hold to 11100.
<p>⚠ Circling NA to Rwy 7 and 25. Circling NA east of Rwy 17-35. Rwy 17 helicopter visibility reduction below 3/4 SM NA. Baro-VNAV NA.</p>	

AWOS-3PT 119.025	SALT LAKE CENTER 132.4 338.3	CTAF 122.90
----------------------------	--	-----------------------



ELEV 4789	TDZE 4789
MIRL Rwy 17-35	

CATEGORY	A	B	C	D
LPV DA	5064-1		275 (300-1)	
LNAV/VNAV DA	5443-1 7/8		654 (700-1 7/8)	
LNAV MDA	5300-1	511 (600-1)	5300-1 3/8	511 (600-1 3/8)
CIRCLING	5300-1	511 (600-1)	5300-1 1/2 511 (600-1 1/2)	5460-2 1/4 671 (700-2 1/4)

NW-1, 23 JAN 2025 to 20 FEB 2025

NW-1, 23 JAN 2025 to 20 FEB 2025