

WAAS CH 63208 W18A	APP CRS 182°	Rwy Idg TDZE Apt Elev	3199 25 25
--	------------------------	-----------------------------	---------------------------------------

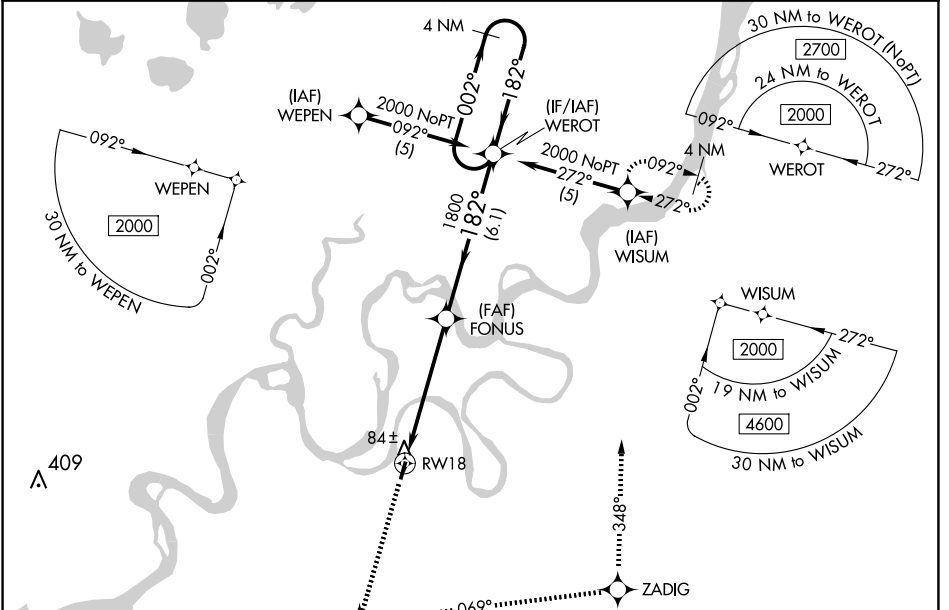
RNAV (GPS) RWY 18

KWETHLUK (KWT) (PFWK)

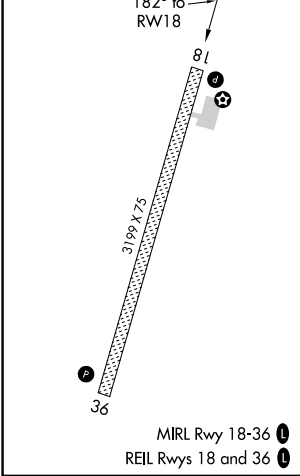
NA Baro-VNAV NA.
DME/DME RNP-0.3 NA.
W When local altimeter setting not received, use Bethel altimeter setting.

MISSED APPROACH: Climb to 2000 direct VORCU and left turn via 069° track to ZADIG and via 348° track to WISUM and hold.

AWOS-3P 120.0	BET/PABE ASOS 135.45	ANCHORAGE CENTER 125.2 372.0	CTAF 122.9
-------------------------	--------------------------------	--	----------------------



ELEV 25	TDZE 25
---------	---------



2000	VORCU	ZADIG	WISUM	WEROT	4 NM Holding Pattern
↑	⬠	↖ 069° tr	⬠	⬠	
VGSi and RNAV glidepath not coincident (VGSi Angle 3.00/TCH 27).					
RWY 18		FONUS	2000		GP 3.00° TCH 40
↖ 182°		↖ 182°	← 182°		
5.4 NM		6.1 NM			
CATEGORY	A	B	C	D	
LPV DA	316-1 291 (300-1)				
LNAV/VNAV DA	594-2 569 (600-2)				
LNAV MDA	620-1	595 (600-1)	620-1¾	595 (600-1¾)	
CIRCLING	680-1	655 (700-1)	680-1¾	680-2	655 (700-2)

AK, 26 DEC 2024 to 20 FEB 2025

AK, 26 DEC 2024 to 20 FEB 2025