

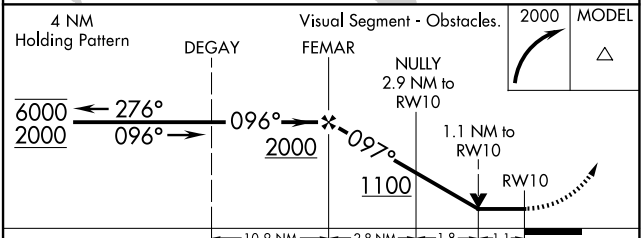
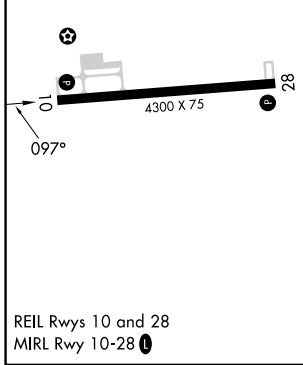
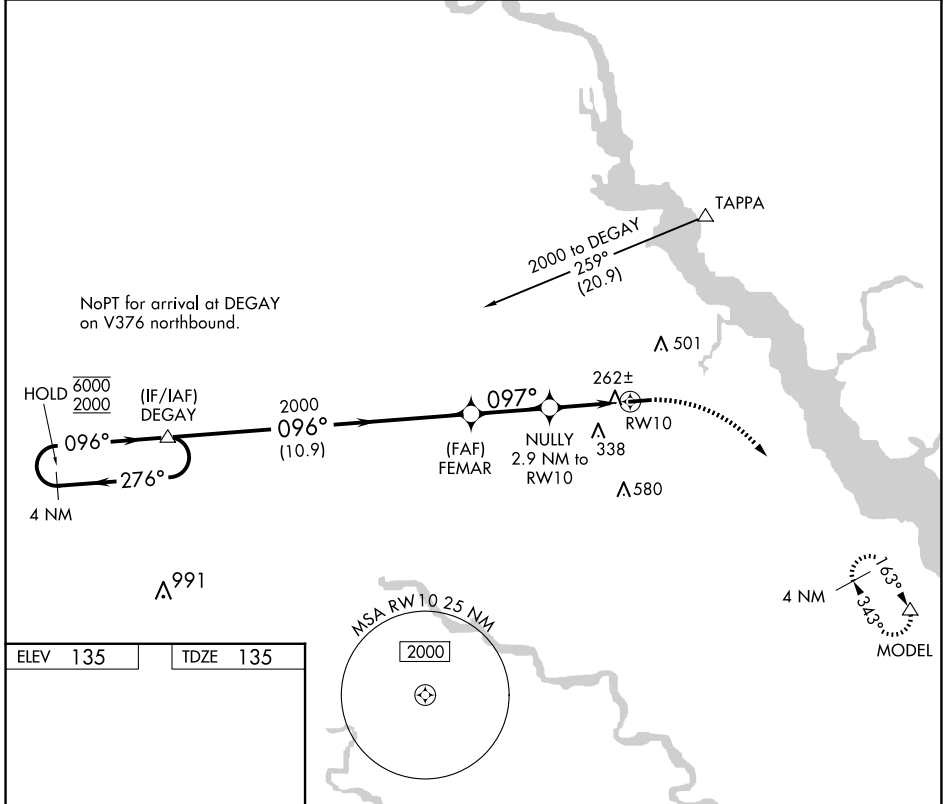
APP CRS	Rwy Idg	4300
097°	TDZE	135
	Apt Elev	135

RNAV (GPS) RWY 10

TAPPAHANNOCK/ESSEX COUNTY (XSA)

RNP APCH - GPS.	MISSED APPROACH: Climbing right turn to 2000 direct MODEL and hold.
Rwy 10 helicopter visibility reduction below 3/4 SM NA.	

AWOS-3 125.775	POTOMAC APP CON 126.4 282.375	UNICOM 122.8 (CTAF) 0
--------------------------	---	---------------------------------



CATEGORY	A	B	C	D
LNAV MDA	540-1	405 (500-1)	NA	
CIRCLING	580-1 445 (500-1)	640-1 505 (600-1)	820-2 685 (700-2)	NA

NE-3, 23 JAN 2025 to 20 FEB 2025

NE-3, 23 JAN 2025 to 20 FEB 2025