

WAAS CH 82225 W31A	APP CRS 298°	Rwy Idg TDZE Apt Elev	3701 60 62
--	------------------------	-----------------------------	---------------------------------------

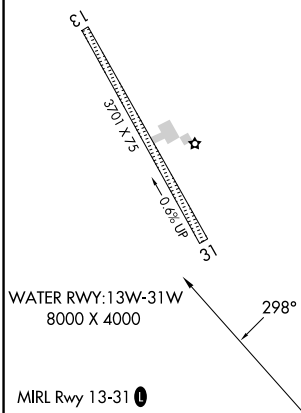
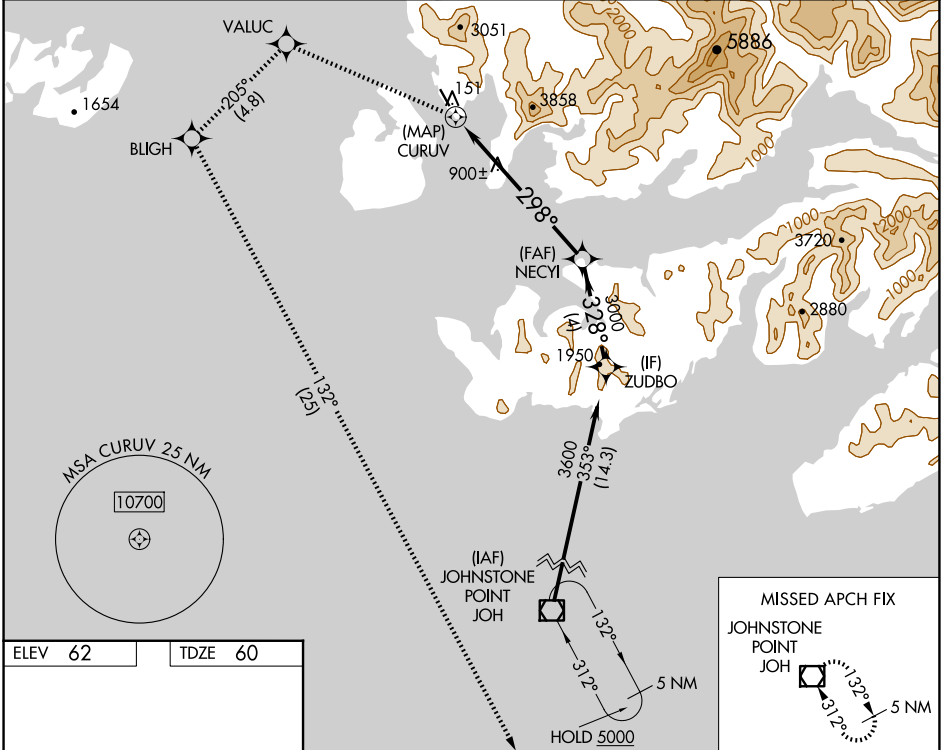
RNAV (GPS) RWY 31

TATITLEK (7KA) (PAKA)

NA Use Valdez altimeter setting. Circling NA northeast of Rwy 31-13. DME/DME RNP-0.3 NA. Helicopter visibility reduction below 1 SM NA. Procedure NA at night.

MISSED APPROACH: Climbing left turn to 4400 direct VALUC and on track 205° to BLIGH and on track 132° to JOH VOR/DME and hold.

ANCHORAGE CENTER 119.3	JUNEAU RADIO 122.2	CTAF 122.7
----------------------------------	------------------------------	----------------------



4400	VALUC	tr 205°	BLIGH	tr 132°	JOH	NECYI	ZUDBO
							3600
	CURUV						3000
							328°
							3.77°
							TCH 40
							0.5 NM
							6.8 NM
							4 NM

CATEGORY	A	B	C	D
LP MDA	1260-1¼ 1200 (1200-1¼)	1260-1½ 1200 (1200-1½)		NA
LNAV MDA	1400-1¼ 1340 (1400-1¼)	1400-1½ 1340 (1400-1½)		NA
CIRCLING	1400-1¼ 1338 (1400-1¼)	1400-1½ 1338 (1400-1½)		NA

AK, 26 DEC 2024 to 20 FEB 2025

AK, 26 DEC 2024 to 20 FEB 2025