

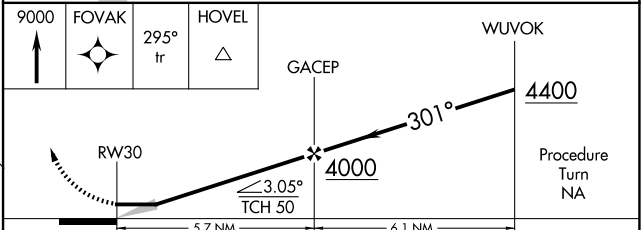
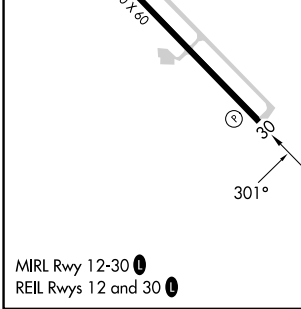
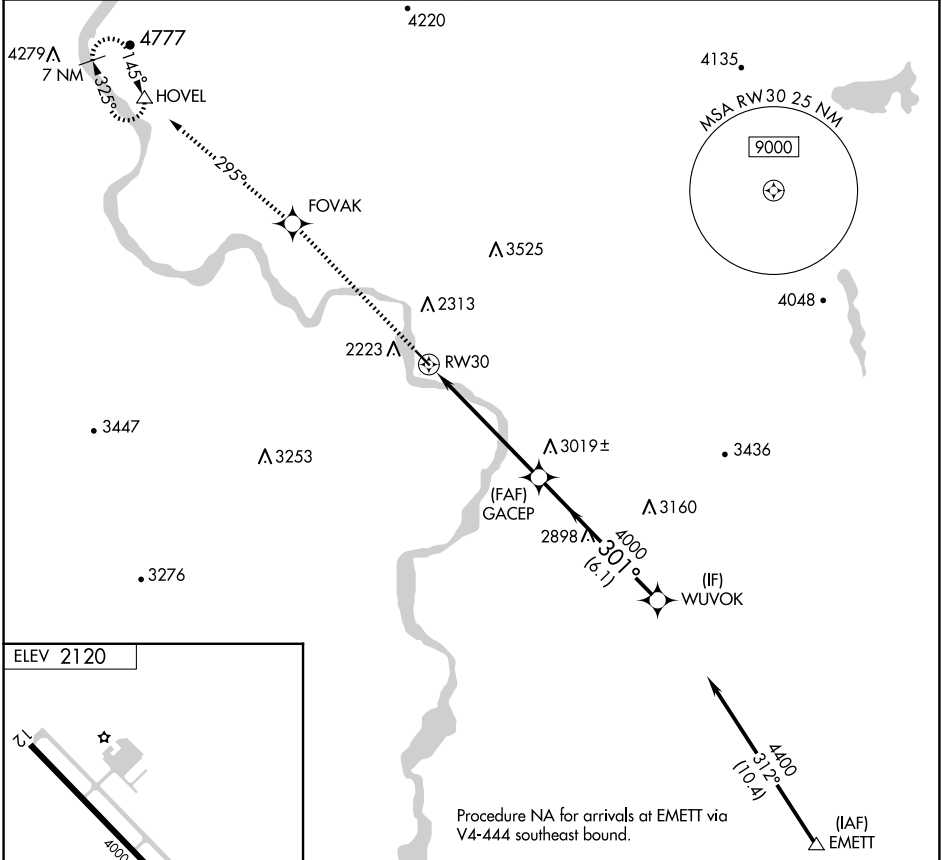
APP CRS	Rwy Idg	N/A
301°	TDZE	N/A
	Apt Elev	2120

RNAV (GPS)-A

WEISER MUNI (S87)

RNP APCH - GPS.	MISSED APPROACH: Climb to 9000 direct FOVAK and via 295° track to HOVEL and hold, continue climb-in-hold to 9000.
<p>Procedure NA at night. Use Ontario altimeter setting; when not received, use Boise altimeter setting and increase all MDAs 160 feet.</p>	

SALT LAKE CENTER 128.05 306.95	UNICOM 122.8 (CTAF)
--	-------------------------------



MIRL Rwy 12-30
REIL Rwy 12 and 30

CATEGORY	A	B	C	D
CIRCLING	3480-1¼ 1360 (1400-1¼)	3480-1½ 1360 (1400-1½)	3480-3 1360 (1400-3)	3620-3 1500 (1500-3)

NW-1, 23 JAN 2025 to 20 FEB 2025

NW-1, 23 JAN 2025 to 20 FEB 2025