

WAAS CH 58238 W01A	APP CRS 354°	Rwy Idg TDZE Apt Elev	8100 7637 7664
--	------------------------	-----------------------------	---

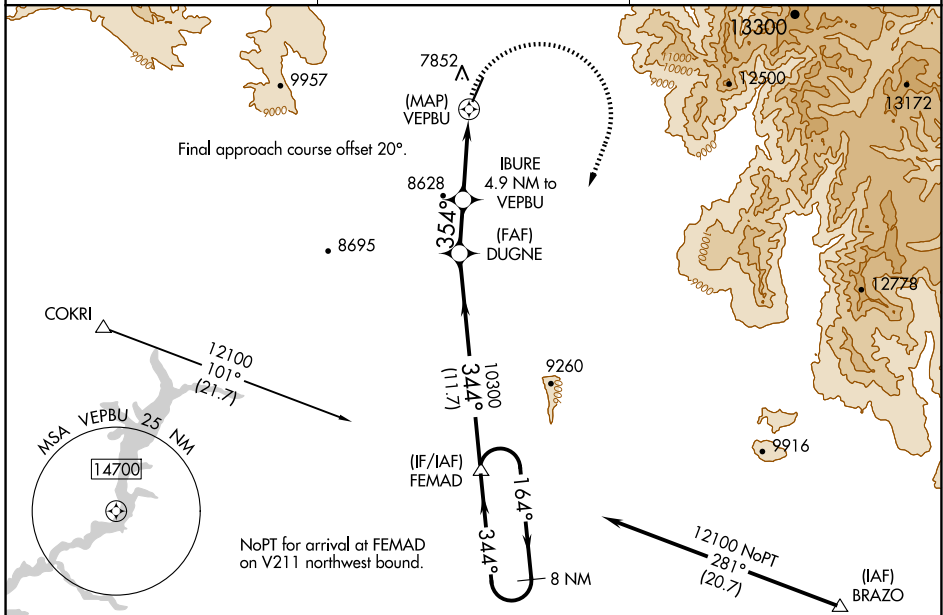
RNAV (GPS) RWY 1

STEVENS FLD (PSO)

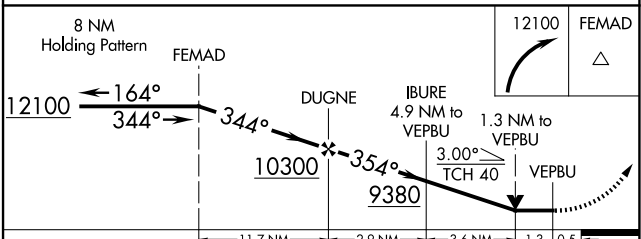
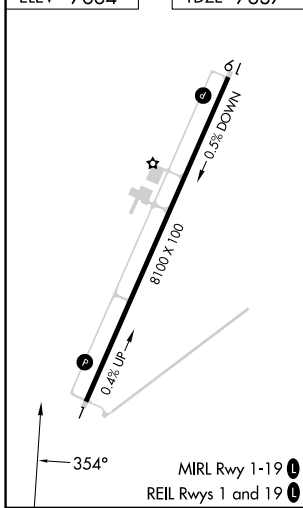
⚠ Circling to Rwy 19 NA at night. DME/DME RNP-0.3 NA. Helicopter visibility reduction below 3/4 SM NA. When local altimeter setting not received, use Durango altimeter setting and increase all MDA 220 feet and LP and LNAV visibility Cat B 1/4 mile and Cat C 3/4 mile, and Circling Cats A/B 1/4 mile.

MISSED APPROACH: Climbing right turn to 12100 direct FEMAD and hold.

AWOS-3 127.175	DENVER CENTER 118.575 348.7	UNICOM 122.7 (CTAF)
--------------------------	---------------------------------------	-------------------------------



ELEV 7664	TDZE 7637
-----------	-----------



CATEGORY	A	B	C	D
LP MDA	8240-1	603 (600-1)	8240-1 3/4 603 (600-1 3/4)	NA
LNAV MDA	8280-1	643 (700-1)	8280-1 7/8 643 (700-1 7/8)	NA
C CIRCLING	8420-1 756 (800-1)	8480-1 1/4 816 (900-1 1/4)	8940-3 1276 (1300-3)	NA

SW-1, 23 JAN 2025 to 20 FEB 2025

SW-1, 23 JAN 2025 to 20 FEB 2025