

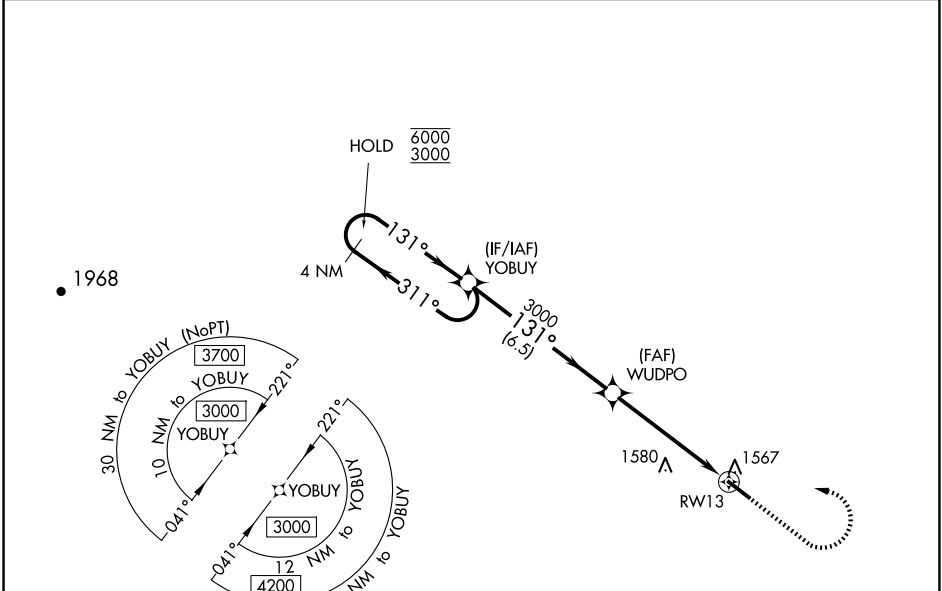
WAAS CH 99720 W13A	APP CRS 131°	Rwy Idg TDZE Apf Elev	5505 1289 1289
--	------------------------	-----------------------------	---

RNAV (GPS) RWY 13

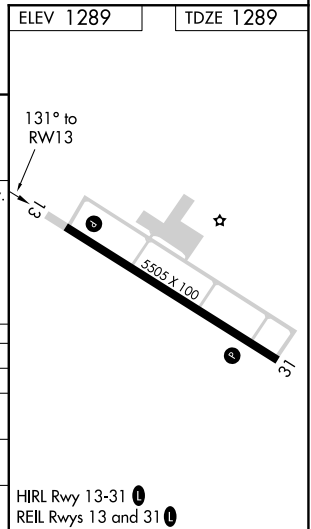
PAULDING NORTHWEST ATLANTA (PUJ)

RNP APCH.		MISSED APPROACH: Climb to 1800 then climbing left turn to 3000 direct YOBUY and hold.
⚠ NA	For uncompensated Baro-VNAV systems, LNAV/VNAV NA below -17°C or above 54°C.	

AWOS-3 126.225	ATLANTA APP CON 121.0 268.7	UNICOM 123.075 (CTAF) 0
--------------------------	---------------------------------------	-----------------------------------



4 NM Holding Pattern YOBUY		WUDPO		YOBUY	
6000 ← 311°		3000		*LNAV only.	
GP 3.00°		131°		*1.5 NM to RWY 13	
TCH 50		3000		RWY 13	
		6.5 NM		3.7 NM	
				1.5 NM	
CATEGORY	A	B	C	D	
LPV DA		1507-3/4	218 (300-3/4)		
LNAV/VNAV DA		1763-1 3/8	474 (500-1 3/8)		
LNAV MDA	1820-1	531 (600-1)	1820-1 1/2	531 (600-1 1/2)	
C CIRCLING	1880-1	591 (600-1)	1940-1 3/4	1940-2	
			651 (700-1 3/4)	651 (700-2)	



SE-4, 23 JAN 2025 to 20 FEB 2025

SE-4, 23 JAN 2025 to 20 FEB 2025