

LOC/DME I-BBG <b>111.35</b> Chan 50 (Y)	APP CRS <b>323°</b>	Rwy Idg <b>7140</b> TDZE <b>1302</b> Apt Elev <b>1302</b>
---	------------------------	---

# ILS or LOC RWY 32

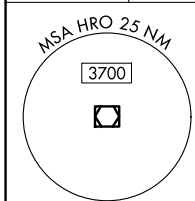
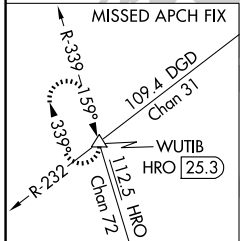
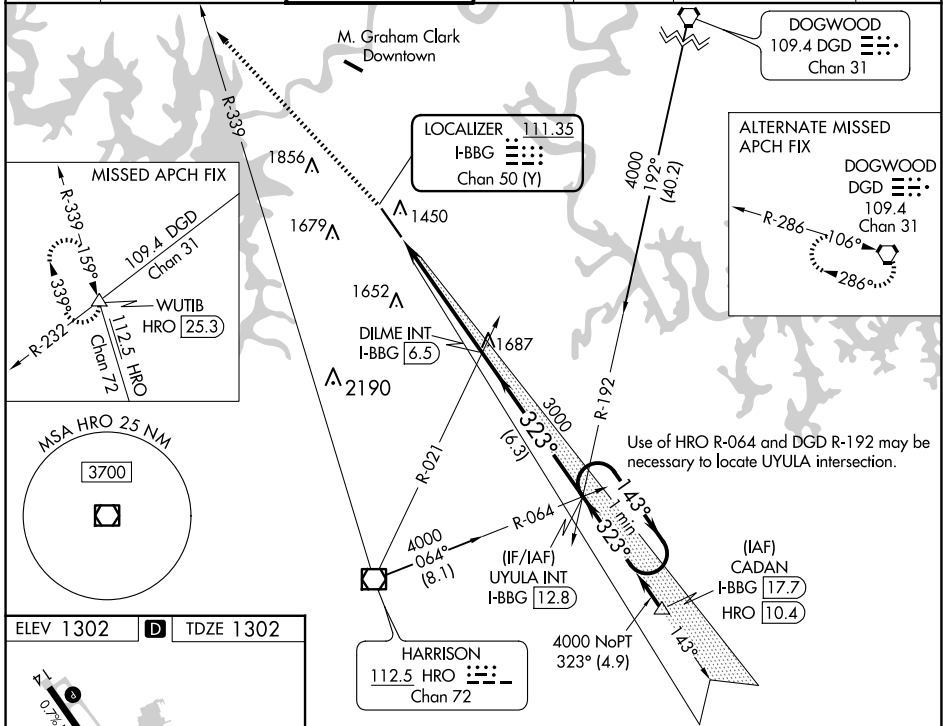
BRANSON (BBG)

**NA** Inop table does not apply. When local altimeter setting not received, use Harrison altimeter setting and increase S-ILS 32 DA to 1549 feet; increase all MDAs 60 feet and S-LOC 32 visibility Cat C/D and Circling visibility Cat C 1/4 SM. VDP NA when using Harrison altimeter setting.

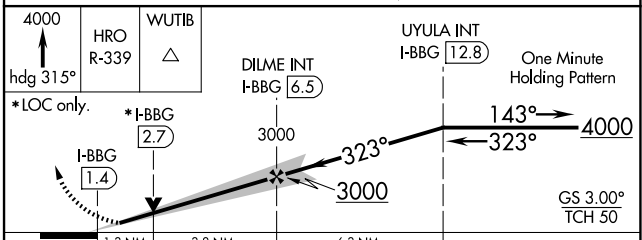
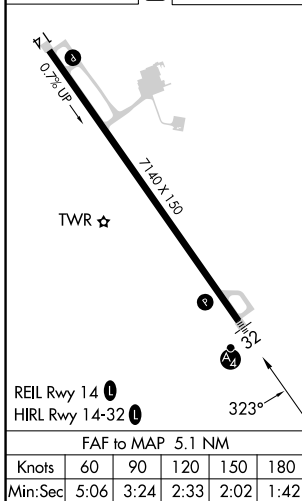
**MALSF**

**MISSED APPROACH:** Climb to 4000 on heading 315° and HRO VOR/DME R-339 to WUTIB INT/HRO 25.3 DME and hold.

ATIS <b>124.625</b>	SPRINGFIELD APP CON <b>126.35</b>	BRANSON TOWER★ <b>128.15 (CTAF)</b>	GND CON <b>118.4</b>	CLNC DEL <b>118.4</b>	SPRINGFIELD CLNC DEL <b>126.35</b> (When tower closed)	UNICOM <b>122.95</b>
------------------------	--------------------------------------	--	-------------------------	--------------------------	--	-------------------------



ELEV 1302	<b>D</b>	TDZE 1302
-----------	----------	-----------



CATEGORY	A	B	C	D
S-ILS 32		1502-1	200 (200-1)	
S-LOC 32		1760-1	458 (500-1)	
<b>C</b> CIRCLING	1760-1 458 (500-1)	1900-1 598 (600-1)	2220-2¾ 918 (1000-2¾)	2220-3 918 (1000-3)

NC-3, 23 JAN 2025 to 20 FEB 2025

NC-3, 23 JAN 2025 to 20 FEB 2025