

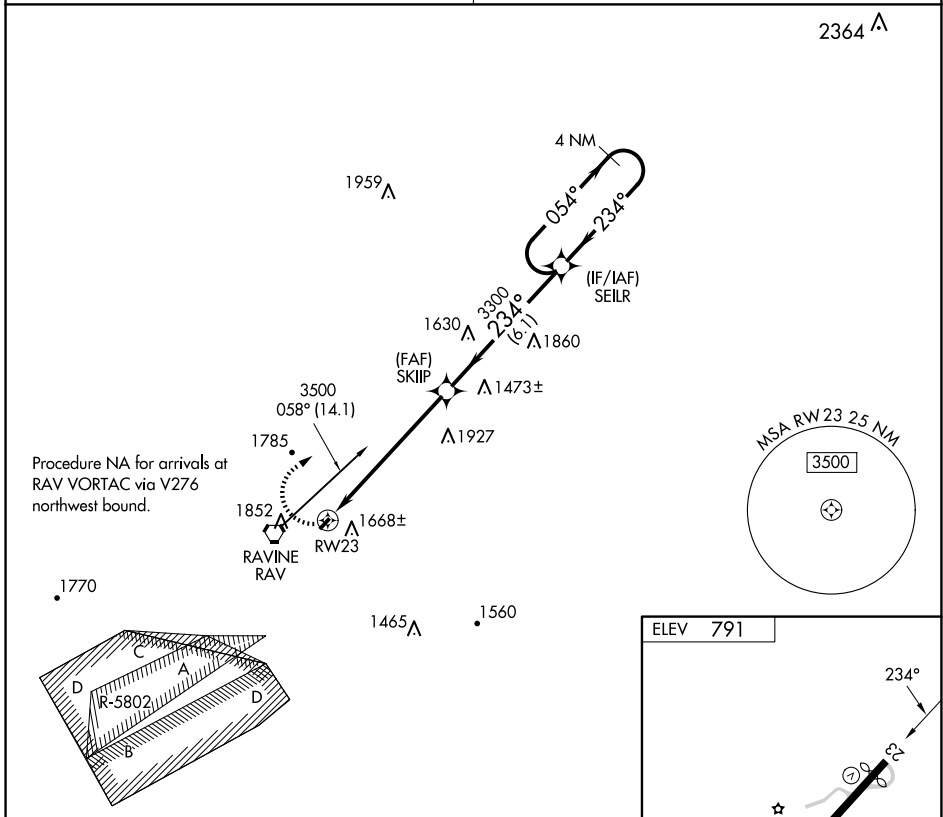
APP CRS <b>234°</b>	Rwy Idg TDZE Apt Elev	<b>N/A</b> <b>N/A</b> <b>791</b>
------------------------	-----------------------------	--

# RNAV (GPS)-A

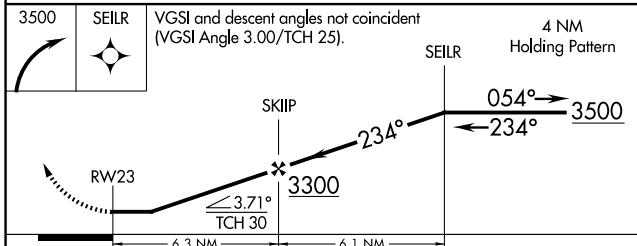
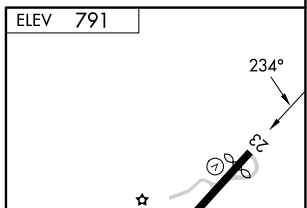
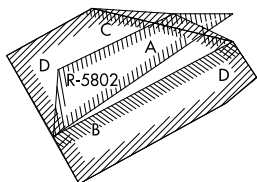
BENDIGO (74N)

<p><b>▽</b> DME/DME RNP-0.3 NA. Procedure NA at night. Visibility reduction by helicopters NA.</p> <p><b>△</b> NA When Harrisburg Intl altimeter setting not received, use Capital City altimeter setting.</p>	<p>MISSED APPROACH: Climbing right turn to 3500 direct SEILR and hold.</p>
--	--

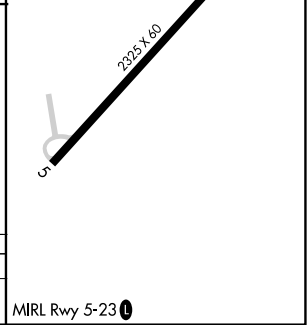
<p>HARRISBURG APP CON</p> <p><b>126.45 269.45</b></p>	<p>CTAF</p> <p><b>122.90</b></p>
---	----------------------------------



Procedure NA for arrivals at RAV VORTAC via V276 northwest bound.



CATEGORY	A	B	C	D
CIRCLING	2460-1¼ 1669 (1700-1¼)	2460-1½ 1669 (1700-1½)	NA	



NE-4, 23 JAN 2025 to 20 FEB 2025

NE-4, 23 JAN 2025 to 20 FEB 2025