

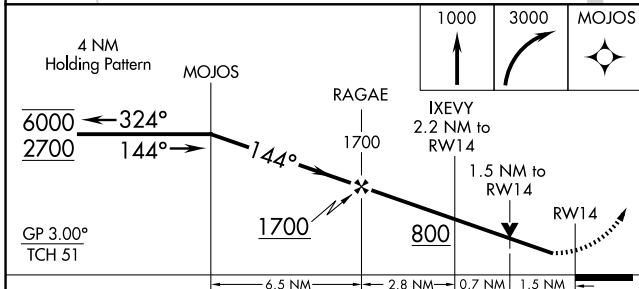
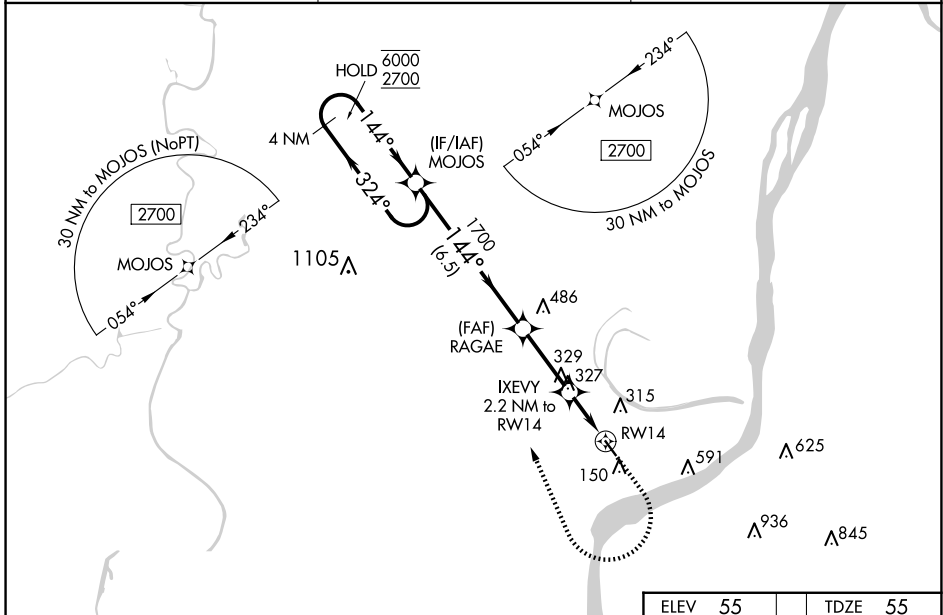
WAAS CH 78337 W14A	APP CRS 144°	Rwy Idg TDZE Apt Elev	3701 55 55
--	------------------------	-----------------------------	---------------------------------------

RNAV (GPS) RWY 14

CONCORDIA PARISH (ØR4)

RNP APCH - GPS.	MISSED APPROACH: Climb to 1000 then climbing right turn to 3000 direct MOJOS and hold.
⚠ Rwy 14 helicopter visibility reduction below ¼ SM NA. For uncompensated Baro-VNAV systems, LNAV/VNAV NA below -15°C or above 54°C. When local altimeter setting not received, use Natchez altimeter setting and increase LPV DA to 408 feet; increase LNAV/VNAV DA to 540 feet and all visibilities ½ SM; increase all MDAs 60 feet and LNAV visibility Cat C ¼ SM, and Circling visibility Cat C ¼ SM. Baro-VNAV and VDP NA when using Natchez altimeter setting.	

AWOS-3 118.2	HOUSTON CENTER 120.975 299.6	UNICOM 122.8 (CTAF) 0
------------------------	--	---------------------------------



ELEV 55	TDZE 55
MOJOS 144° 3701 x 75 32	
MRL Rwy 14-32 0 REIL Rws 14 and 32 0	

CATEGORY	A	B	C	D
LPV DA	352-1	297 (300-1)		NA
LNAV/VNAV DA	484-1¼	429 (500-1¼)		NA
LNAV MDA	580-1	525 (600-1)	580-1½ 525 (600-1½)	NA
CIRCLING	680-1	625 (700-1)	960-2¾ 905 (1000-2¾)	NA

SC-4, 23 JAN 2025 to 20 FEB 2025

SC-4, 23 JAN 2025 to 20 FEB 2025