

|  |                        |                             |   |
|--|------------------------|-----------------------------|---|
| WAAS<br>CH <b>77619</b><br><b>W18A</b> | APP CRS<br><b>183°</b> | Rwy Idg<br>TDZE<br>Apt Elev | <b>4600</b><br><b>3326</b><br><b>3326</b> |
|--|------------------------|-----------------------------|---|

# RNAV (GPS) RWY 18

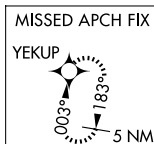
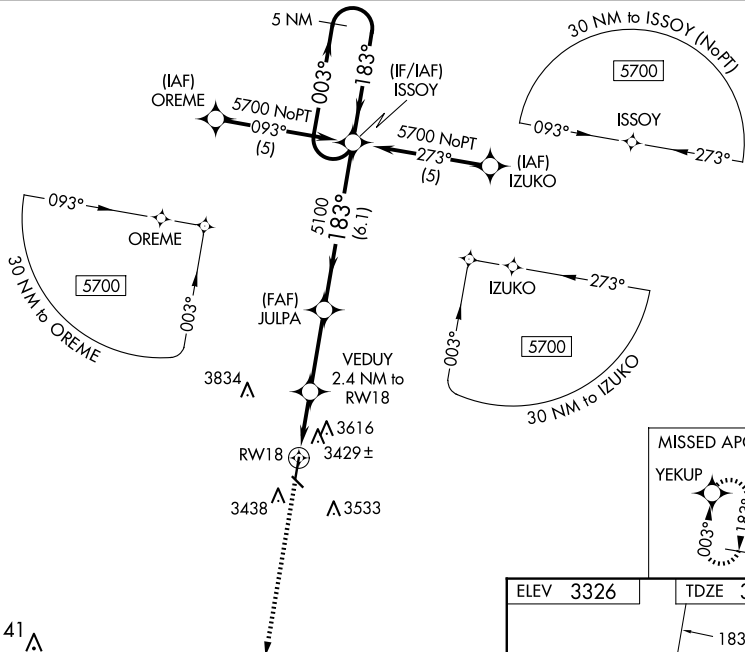
SYRACUSE-HAMILTON COUNTY MUNI (3K3)

RNP APCH-GPS.

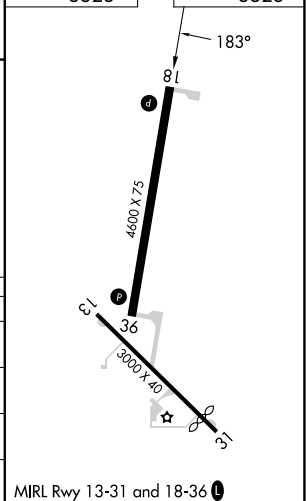
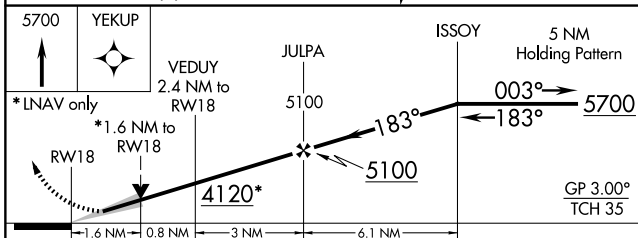
**V** Baro-VNAV NA when using Lamar altimeter setting. For uncompensated Baro-VNAV systems, LNAV/VNAV NA below -21°C (-5°F) or above 54°C (130°F). When local altimeter setting not received, use Lamar altimeter setting; increase LPV DA to 3730 feet and all visibilities ½ SM; increase LNAV/VNAV DA to 4093 feet and all visibilities ¾ SM; increase all MDAs 160 feet and visibility Circling Cat A/B ¼ SM and LNAV Cat C and Circling Cat C ½ SM. VDP NA when using Lamar altimeter setting. Circling to Rwy 13/31 NA at night.

**MISSED APPROACH:**  
Climb to 5700 direct YEKUP and hold.

|                            |                                       |                               |
|----------------------------|---------------------------------------|-------------------------------|
| AWOS-3PT<br><b>119.975</b> | DENVER CENTER<br><b>133.4 377.175</b> | UNICOM<br><b>122.8 (CTAF)</b> |
|----------------------------|---------------------------------------|-------------------------------|



|           |           |
|-----------|-----------|
| ELEV 3326 | TDZE 3326 |
|-----------|-----------|



| CATEGORY     | A                    | B                    | C | D  |
|--------------|----------------------|----------------------|---|----|
| LPV DA       | 3576-1 250 (300-1)   |                      |   | NA |
| LNAV/VNAV DA | 3939-2¼ 613 (700-2¼) |                      |   | NA |
| LNAV MDA     | 3860-1 534 (600-1)   | 3860-1½ 534 (600-1½) |   | NA |
| CIRCLING     | 3980-1 654 (700-1)   | 4200-2½ 874 (900-2½) |   | NA |

NC-2, 23 JAN 2025 to 20 FEB 2025

NC-2, 23 JAN 2025 to 20 FEB 2025