

| | | | |
|--|------------------------|-----------------------------|---|
| WAAS CH 81838 W22A | APP CRS 220° | Rwy Idg TDZE Apt Elev | 2999 1371 1371 |
|--|------------------------|-----------------------------|---|

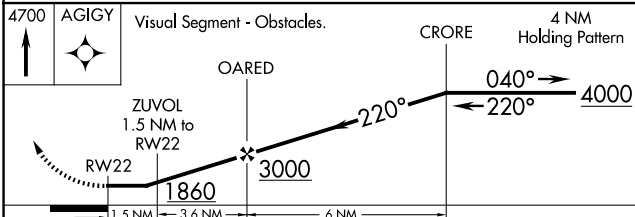
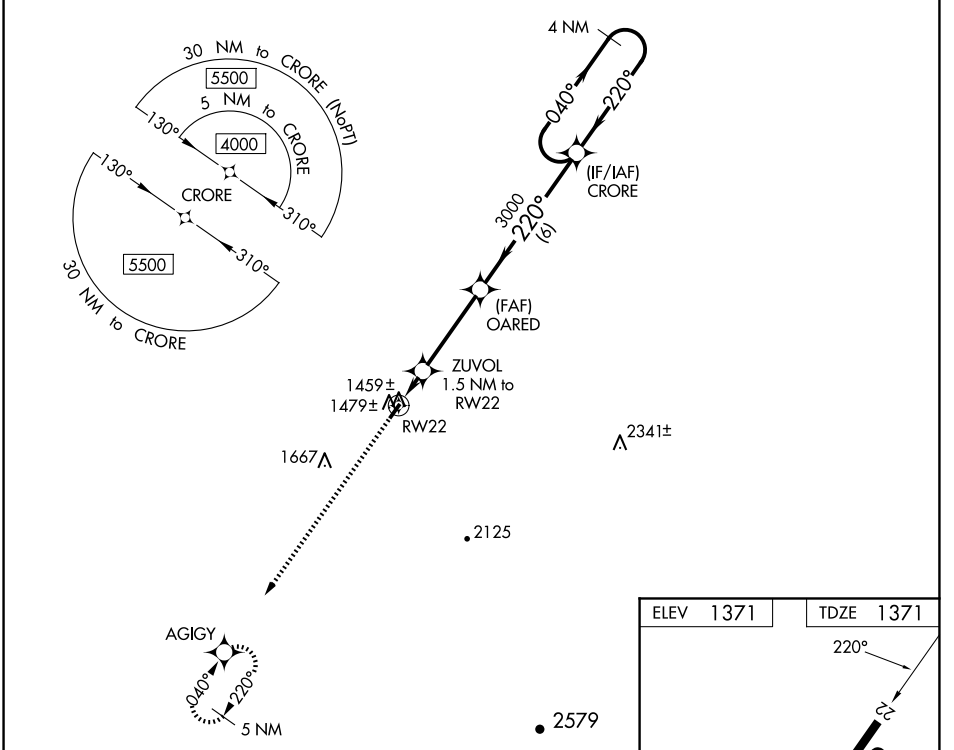
RNAV (GPS) RWY 22

MC CREARY COUNTY (18I)

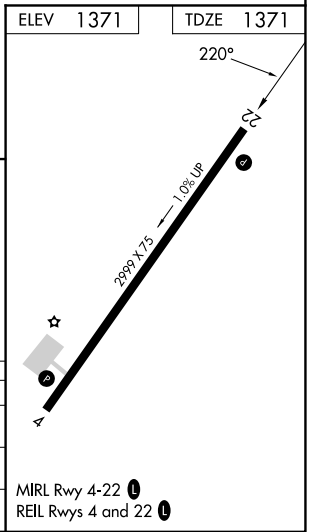
⚠ NA DME/DME RNP-0.3 NA. Procedure NA at night. Helicopter visibility reduction below 1 SM NA. Use Williamsburg altimeter setting, when not received, use London altimeter setting and increase all MDA 40 feet and LP Cat C visibility 1/8 mile and Circling Cat C visibility 1/4 mile.

MISSED APPROACH: Climb to 4700 direct AGIGY and hold, continue climb-in-hold to 4700.

| | |
|---|----------------------------------|
| INDIANAPOLIS CENTER 124.625 371.925 | UNICOM 123.05 (CTAF) 0 |
|---|----------------------------------|



| CATEGORY | A | B | C | D |
|-------------------|-----------------------|-----------------------|-------------------------|----|
| LP MDA | 1780-1 | 409 (500-1) | 1780-1¼ 409 (500-1¼) | NA |
| LNAV MDA | 1800-1 | 429 (500-1) | 1800-1⅜ 429 (500-1⅜) | NA |
| C CIRCLING | 1880-1 509 (600-1) | 2000-1 629 (700-1) | 2020-1¾ 649 (700-1¾) | NA |



SE-1, 23 JAN 2025 to 20 FEB 2025

SE-1, 23 JAN 2025 to 20 FEB 2025