

WAAS CH <b>42744</b> <b>W34A</b>	APP CRS <b>343°</b>	Rwy Idg TDZE <b>4700</b> <b>5365</b> Apt Elev <b>5374</b>
--	------------------------	--

# RNAV (GPS) RWY 34

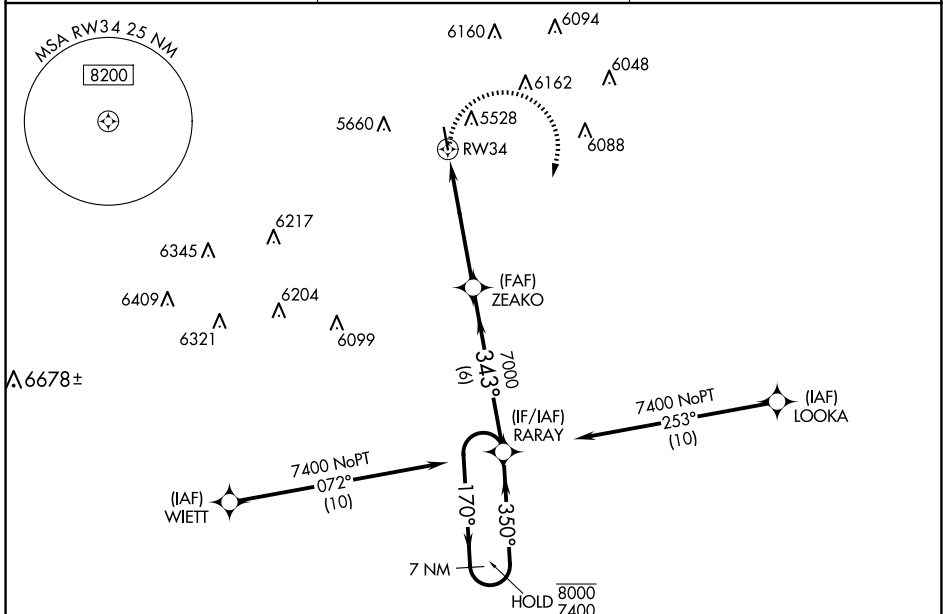
LIMON MUNI (LIC)

RNP APCH - GPS.

**⚠** Rwy 34 helicopter visibility reduction below  $\frac{3}{4}$  SM NA. For uncompensated Baro-VNAV systems, LNAV/VNAV NA below -25°C or above 54°C.

MISSED APPROACH: Climbing right turn to 7400 direct RARAY and hold.

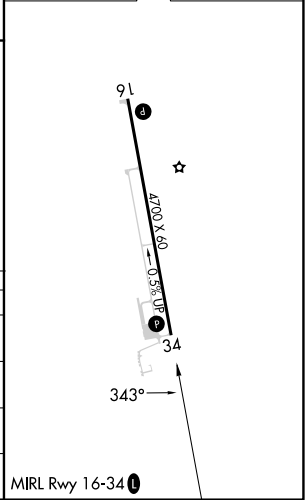
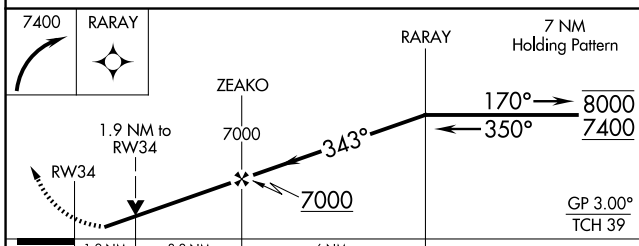
ASOS <b>121.125</b>	DENVER CENTER <b>133.4 377.175</b>	CTAF <b>122.9 0</b>
------------------------	---------------------------------------	------------------------



SW-1, 23 JAN 2025 to 20 FEB 2025

SW-1, 23 JAN 2025 to 20 FEB 2025

ELEV 5374	TDZE 5365
-----------	-----------



CATEGORY	A	B	C	D
LPV DA	5615- $\frac{3}{4}$	250 (300- $\frac{3}{4}$ )		NA
LNAV/VNAV DA	5824- $1\frac{3}{8}$	459 (500- $1\frac{3}{8}$ )		NA
LNAV MDA	6000-1	635 (700-1)	6000- $1\frac{3}{4}$ 635 (700- $1\frac{3}{4}$ )	NA
<b>C</b> CIRCLING	6000-1	626 (700-1)	6220- $2\frac{1}{2}$ 846 (900- $2\frac{1}{2}$ )	NA