

CONTINUED FROM PRECEDING PAGE

RADIO AIDS TO NAVIGATION: NOTAM FILE SIT.

LEVEL ISLAND (H) (H) VOR/DME 116.5 LVD Chan 112 N56°28.06' W133°04.99' 353° 20.6 NM to fld. 98/20E.

VOR unusable:

020°-050° byd 37 NM

270°-300° byd 25 NM blo 10,000'

301°-321° byd 25 NM blo 7,000'

wx cam avbl at <https://weathercams.faa.gov>

DME unusable:

020°-050° byd 25 NM blo 11,000'

020°-050° byd 37 NM

105°-120° byd 29 NM blo 10,000'

121°-135° byd 35 NM blo 7,000'

270°-300° byd 25 NM blo 10,000'

301°-321° byd 25 NM blo 7,000'

345°-350° byd 36 NM blo 8,000'

LDA/DME 110.5 I-PSG Chan 42 Rwy 23. LOC unusable byd 25° left of course; byd 20° right of course.

COMM/NAV/WEATHER REMARKS: For a toll free call to Sitka FSS dial 800-478-6300. For a toll free call to Juneau FSS dial 1-800-WX-Brief.

PILOT POINT

PILOT POINT (PNP)(PAPN) 0 NNE UTC-9(-8D) N57°34.82' W157°34.32'

57 B NOTAM FILE PNP

RWY 07-25: 3280X75 (GRVL) MIRL 0.6% up E

RWY 25: PAPI(P4L)—GA 3.0° TCH 25'

SERVICE: LGT ACTVT PAPI Rwy 25; MIRL Rwy 07-25—CTAF.

AIRPORT REMARKS: Unattended. Rwy conditions not monitored. Recommend visual inspection prior to use.

AIRPORT MANAGER: 907-246-3325

WEATHER DATA SOURCES: AWOS-3P 118.375 (907) 797-2296. (WX CAM)

COMMUNICATIONS: CTAF 122.9

Ⓡ ANCHORAGE CENTER APP/DEP CON 132.9

RADIO AIDS TO NAVIGATION: NOTAM FILE AKN.

KING SALMON (H) (H) VORTAC 112.8 AKN Chan 75 N58°43.48' W156°45.14' 185° 73.6 NM to fld. 95/16E.

TACAN antenna offset 150' se

TACAN AZIMUTH unusable:

130°-140° byd 13 NM blo 4,000'

130°-140° byd 30 NM

332°-348° byd 19 NM blo 5,000'

DME unusable:

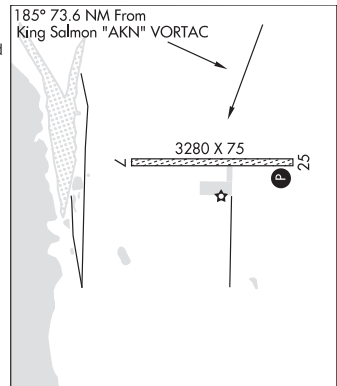
332°-348° byd 19 NM blo 5,000'

COMM/NAV/WEATHER REMARKS: For a toll free call to Kenai FSS dial 1-866-864-1737.

KODIAK

L-21, 3C

IAF



UGASHIK BAY (UGB) 10 SSW UTC-9(-8DT) N57°25.52' W157°44.39'

132 NOTAM FILE ENA

RWY 12-30: 5280X125 (GRVL-DIRT)

RWY 12: Brush.

RWY 30: Brush.

AIRPORT REMARKS: Unattended. Emerg use only. Brush growing on rwy. Rwy not suitable for tricycle ldg gear acft.

AIRPORT MANAGER: 907-267-1248

COMMUNICATIONS: CTAF 122.9

RADIO AIDS TO NAVIGATION: NOTAM FILE PTH.

PORT HEIDEN NDB/DME (HW) 371 PDN Chan 32 N56°57.26' W158°38.85' 030° 41.0 NM to fld. 56/16E.

DME unusable:

050°-110° byd 32 NM blo 6,500'

COMM/NAV/WEATHER REMARKS: For a toll free call to Sitka FSS dial 800-478-6300.

KODIAK

H-21, L-21, 3C

