

**DETROIT/GROSSE ILE**

**GROSSE ILE MUNI** (ONZ)(KONZ) 2 S UTC-5(-4DT) N42°05.94' W83°09.69'

**DETROIT  
COPTER  
L-28J, A  
IAP**

591 B NOTAM FILE ONZ

**RWY 04-22:** H4846X100 (ASPH) S-66, D-83, 2D-105 MIRL  
0.3% up NE

**RWY 04:** REIL. PAPI(P4L)—GA 3.04° TCH 40'. Tree. Rgt tfc.

**RWY 22:** REIL. PAPI(P4L)—GA 3.04° TCH 40'. Thld dsplcd 428'.  
Trees.

**RWY 17-35:** H4424X75 (CONC) S-40, D-55, 2D-90 MIRL

**RWY 17:** PAPI(P4L)—GA 3.0° TCH 26'. Thld dsplcd 672'. Trees.

**RWY 35:** PAPI(P4L)—GA 3.0° TCH 20'. Rgt tfc.

**SERVICE:** S4 FUEL 100LL, JET A LGT Actvt REIL Rwy 04 & 22; PAPI  
Rwy 04, 22, 17, & 35; MIRL Rwy 04-22 & 17-35—CTAF.

**AIRPORT REMARKS:** Attended Mon-Fri 1300-2300Z, Sat-Sat prior  
arrngmt. Birds and deer on and invof arpt. Ultralight & pwrd prcht act  
invof arpt. Arpt clsd to acr ops gtr than 30 pax seats exc PPR call  
amgr. Rwy 17-35 extsv peeling & cracking-FOD hazard.

**AIRPORT MANAGER:** 734-675-0155

**WEATHER DATA SOURCES:** AWOS-3 119.675 (734) 692-9686.

**COMMUNICATIONS:** CTAF/UNICOM 123.0

CARLETON RCO 122.1R 115.7T (LANSING RADIO)

® **DETROIT APP/DEP CON** 134.3

**CLEARANCE DELIVERY PHONE:** For CD ctc Detroit Apch at 734-955-1404.

**RADIO AIDS TO NAVIGATION:** NOTAM FILE LAN.

**CARLETON (VH) (DH) VOR/DME** 115.7 CRL Chan 104 N42°02.88' W83°27.45' 080° 13.6 NM to fld. 628/3W.

VOR unusable:

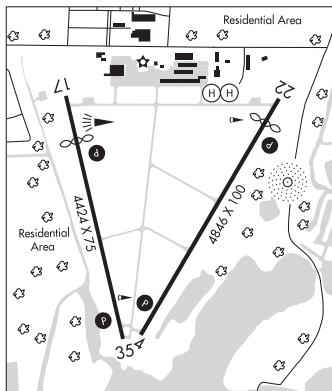
- 000°-019° blo 5,000'
- 020°-025° byd 40 NM
- 020°-030° byd 13 NM blo 5,000'
- 031°-040° blo 5,000'
- 041°-050° byd 25 NM blo 8,000'
- 041°-055° byd 65 NM
- 056°-083° byd 40 NM
- 084°-104° byd 40 NM blo 18,000'
- 105°-246° byd 40 NM
- 247°-283° byd 60 NM blo 12,500'
- 255°-335° byd 30 NM blo 8,000'
- 284°-294° byd 40 NM
- 295°-305° byd 40 NM blo 18,000'
- 306°-359° byd 40 NM

**NDB (MHW)** 419 RYS N42°06.07' W83°09.18' at fld. 576/7W. NOTAM FILE ONZ.

**COMM/NAV/WEATHER REMARKS:** For CD ctc Detroit Apch at 734-955-1404.

• • • • •  
**HELIPAD H1:** H25X25 (CONC)

**HELIPAD H2:** H25X25 (CONC)



**DEXTER**

**CACKLEBERRY** (2E8) 5 N UTC-5(-4DT) N42°25.51' W83°52.11'

**DETROIT  
COPTER**

898 NOTAM FILE LAN

**RWY 06-24:** 2113X100 (TURF) 0.6% up NE

**RWY 06:** Thld dsplcd 515'. Trees.

**RWY 24:** Thld dsplcd 500'. Tree.

**AIRPORT REMARKS:** Unattended. Birds and deer invof rwy. Rwy 06-24 CLOSED when snow covd. For rwy conds call amgr. Rwy  
24 3' yellow cones dthr mkd with 3' wide grd lvl conc stones.

**AIRPORT MANAGER:** 734-678-7942

**COMMUNICATIONS:** CTAF 122.9

**CLEARANCE DELIVERY PHONE:** For CD ctc Detroit Apch at 734-955-1404.