

**SPRINGFIELD—BRANSON NTL** (SGF)(KSGF) P (ARNG) 5 NW UTC-6(-5DT) N37°14.74'  
W93°23.32'

**KANSAS CITY**  
H-61, L-16F  
IAP, AD

1268 B TPA—2268(1000) LRA ARFF Index—See Remarks NOTAM FILE SGF MON Airport

**RWY 14-32:** H8000X150 (CONC-GRVD) S-135, D-170, 2S-175,  
2D-300 PCN 60 R/C/W/T HIRL

**RWY 14:** MALS. PAPI(P4R)—GA 3.0° TCH 56'. RVR-T

**RWY 32:** REIL. PAPI(P4L)—GA 3.0° TCH 35'. RVR-R

**RWY 02-20:** H7003X150 (CONC-GRVD) S-135, D-170, 2S-175,  
2D-300 PCN 60 R/C/W/T HIRL

**RWY 02:** MALS. VASI(V4L)—GA 3.0° TCH 54'. RVR-T

**RWY 20:** MALS. PAPI(P4L)—GA 3.0° TCH 47'. RVR-R

**RUNWAY DECLARED DISTANCE INFORMATION**

**RWY 02:** TORA-7003 TODA-7003 ASDA-7003 LDA-7003

**RWY 14:** TORA-8000 TODA-8000 ASDA-8000 LDA-8000

**RWY 20:** TORA-7003 TODA-7003 ASDA-7003 LDA-7003

**RWY 32:** TORA-8000 TODA-8000 ASDA-8000 LDA-8000

**SERVICE:** S4 FUEL 100LL, JET A OX 1, 2 MILITARY—FUEL A++(mil)  
(NC-100LL, A)

**AIRPORT REMARKS:** Attended continuously. Be alert for powered prcht act invof Downtown Arpt (7 mi ENE of SGF) at or blo 1,000 ft. Birds and wildlife on and invof arpt. Oxygen avbl Mon-Fri 1400-2300Z†. Class I, ARFF Index B. PPR 24 hours for unscheduled air carrier ops with more than 30 passenger seats call SGF 417-868-0590. ARFF index C and D avbl on request. Group IV acct or larger on Twy D from the AER 32 to Twy N and Twy U along cargo apron must perform judgemental oversteering instead of cockpit over cntrln when taxiing. Compass rose north of Twy D at the apch end Rwy 32 restricted to acct with fuel valve and standby compass of 5.5' in hgt or HYR. Twy N south of Rwy 14-32 clsd to A-321, B727-200, all MD-80 series, B757 and larger acct. Flight Notification Service (ADCUS) available.

**MILITARY REMARKS:** ARNG MO-AVCRAD fac opr 1300-2100Z† Mon-Fri exc hol. Maint asst avbl dur nml duty hr. Flt acct opr 1400-2130Z† Mon-Fri exc hol. Extn hr on Tue, Wed, Thu 1400-0200Z†. Dur DST extn hr only on Wed, Thur 1400-0500Z†. ARNG-24 hr PPR req, valid 1 hr +/- ETA. For PPR, ctc flt OPS at C417-874-8460 dur nml duty hr. All acct rqr ctc BEARS DEN on 38.525, 138.75 and 245.6. Dep acct rqr to ctc BEARS DEN to adhere to arpt security measures. Tran acct shall arr and dep fr Twy G or Twy J. A++ fuel avbl for supported AVRAD acct. Rwy—all rwy grooved. Rwy 02 RVR-T. Rwy 20 RVR-R. Rwy 14 RVR-T. Rwy 32 RVR-R.

**AIRPORT MANAGER:** 417-868-0500

**WEATHER DATA SOURCES:** ASOS (314) 227-9909

**COMMUNICATIONS:** ATIS 135.125 UNICOM 122.95

RCO 122.2 (COLUMBIA RADIO)

RCO 116.9T (COLUMBIA RADIO)

Ⓡ APP/DEP CON 121.1 (020°-199°) 124.95 (200°-019°)

TOWER 119.9 GND CON 121.9 CLNC DEL 123.675

ARNG OPS 38.525 138.75 245.6 (All acct rqr to ctc BEARS DEN).

**AIRSPACE:** CLASS C svc ctc APP CON.

**RADIO AIDS TO NAVIGATION:** NOTAM FILE SGF.

(VH) (H) VORTACW 116.9 SGF Chan 116 N37°21.36' W93°20.04' 198° 7.1 NM to fld. 1240/4E.

VOR unusable:

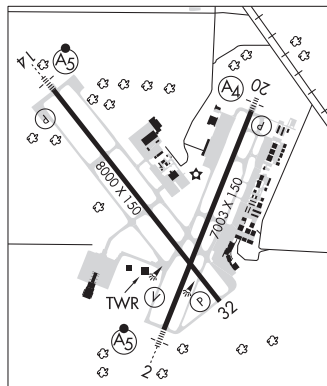
073°-085° byd 40 NM blo 18,000'

095°-120° byd 40 NM

121°-137° byd 40 NM blo 18,000'

ILS/DME 109.9 I-SGF Chan 36 Rwy 02. Class IB.

ILS/DME 109.7 I-GWA Chan 34 Rwy 14. Class IE.



**STATE TECHNICAL COLLEGE OF MISSOURI** (See LINN on page 251)