

GILLETTE

NORTHEAST WYOMING RGNL (GCC)(KGCC) 4 NW UTC-7(-6DT) N44°20.93' W105°32.36' **CHEYENNE**
 4365 B TPA—See Remarks Class I, ARFF Index A NOTAM FILE GCC **H-1F, 2G, L-12F, 13E**
RWY 16-34: H7501X150 (CONC-GRVD) S-70, D-110, 2S-139, **IAP, AD**
 2D-160 PCR 580 R/D/W/T HIRL 0.4% up SE

RWY 16: REIL. PAPI(P4L)—GA 3.17° TCH 43'. Road.
RWY 34: MALSR. PAPI(P4L)—GA 3.2° TCH 56'. P-line.
RWY 03-21: H5804X75 (CONC-GRVD) S-40, D-60
 PCR 240 R/D/W/T MIRL 0.4% up SW
RWY 03: REIL. PAPI(P4L)—GA 4.0° TCH 41'.
RWY 21: REIL. PAPI(P4L)—GA 4.0° TCH 39'.

RUNWAY DECLARED DISTANCE INFORMATION

RWY 03: TORA-5803 TODA-5803 ASDA-5803 LDA-5803
RWY 16: TORA-7500 TODA-7500 ASDA-7500 LDA-7500
RWY 21: TORA-5803 TODA-5803 ASDA-5803 LDA-5803
RWY 34: TORA-7500 TODA-7500 ASDA-7500 LDA-7500

SERVICE: S4 FUEL 100LL, JET A OX 1, 2 LGT ACTVT MALSR Rwy 34; REILS Rwys 03, 16 and 21; HIRL Rwy 16-34, MIRL Rwy 03-21—CTAF. Sequence flashers Rwy 34 avbl on high setting only. PAPI Rws 03, 16, 21, 34 opr consly.

AIRPORT REMARKS: Attended 1200-0700Z. Conds unmon. Fuel avbl H24 via credit card. Birds inofv arpt. Mining/blasting opns 1/2 mile NE AER 21 dur dalgt hrs. TPA—5165(800) for light acft, 5565(1200) for large acft. PPR unscheduled air carrier ops with more than 30 pax seats call amgr 307-686-1042. Opn on unpaved sfcs prohibited.

AIRPORT MANAGER: 307-686-1042

WEATHER DATA SOURCES: ASOS 124.175 (307) 682-1712.

COMMUNICATIONS: CTAF 118.5 UNICOM 122.95

GILLETTE RCO 122.3 (CASPER RADIO)

® DENVER CENTER APP/DEP CON 135.6

CLEARANCE DELIVERY PHONE: For CD ctc Denver ARTCC at 303-651-4257.

AIRSPACE: CLASS E svc 1300-0600Z; other times CLASS G.

RADIO AIDS TO NAVIGATION: NOTAM FILE GCC.

GILLETTE (VH) (H) VOR/DME 114.6 GCC Chan 93 N44°20.87' W105°32.61' at fld. 4336/9E.

VOR unusable:

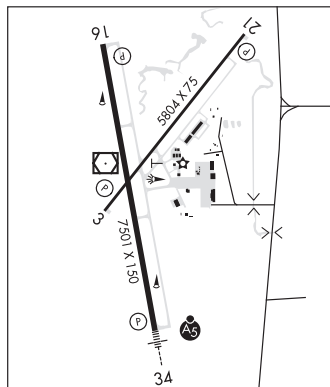
- 053°-157° byd 40 NM
- 158°-168° byd 40 NM blo 10,000'
- 158°-168° byd 56 NM
- 169°-188° byd 40 NM
- 189°-199° byd 40 NM blo 8,500'
- 189°-199° byd 46 NM
- 200°-238° byd 40 NM
- 253°-278° byd 20 NM blo 8,000'
- 259°-279° byd 40 NM
- 280°-320° byd 40 NM

DME unusable:

- 163°-193° byd 25 NM blo 10,300'
- 193°-268° byd 20 NM blo 8,000'
- 193°-268° byd 30 NM blo 13,000'
- 268°-333° byd 22 NM blo 10,500'

DERYK NDB (MHW/LOM) 380 GC N44°16.25' W105°31.33' 342° 4.7 NM to fld. 4674/9E. NDB unmonitored 0500-1300Z.

ILS/DME 110.1 I-LLT Chan 38 Rwy 34. Class IE. LOM DERYK NDB. Glideslope unusable byd 8 NM. Unmonitored when ATCT clsd.



GLENDO

THOMAS MEML (76V) 1 N UTC-7(-6DT) N42°31.20' W105°01.20' **CHEYENNE**

4666 NOTAM FILE CPR

RWY 16-34: 4397X70 (TURF-DIRT)

RWY 16: Tree.

RWY 34: Road.

AIRPORT REMARKS: Unattended. Ctc town hall 307-735-4242 or arpt mgr 307-331-5005 prior to use for sfc cond. Ocnl antelope on rwy. First 500 ft Rwy 34 end very rough. Rwy 16-34 mowed natural grass. Rwy 16-34 muddy, slick and soft when wet, ocnl gopher holes. Unrestricted vehicle access.

AIRPORT MANAGER: 307-298-7397

COMMUNICATIONS: CTAF 122.9

CLEARANCE DELIVERY PHONE: For CD ctc Denver ARTCC at 303-651-4257.