

CONTINUED FROM PRECEDING PAGE

AIRSPACE: CLASS E.

RADIO AIDS TO NAVIGATION: NOTAM FILE RIW.

RIVERTON (VL) (DH) WORW/DME 114.05 RIW Chan 87(Y) N43°03.94' W108°27.33' at fld. 5458/10E.

VOR unusable:

133°-142° byd 40 NM

165°-281° byd 40 NM

322°-039° byd 40 NM

ILS 110.5 I-RIW Rwy 28. Class IE. Status is not remotely Monitored.

ROCK SPRINGS

SOUTHWEST WYOMING RGNL (RKS)(KRKS) 7 E UTC-7(-6DT) N41°35.65' W109°03.91'

SALT LAKE CITY

6765 B ARFF Index—See Remarks NOTAM FILE RKS

H-3E, L-11E

RWY 09-27: H10000X150 (ASPH-GRVD) S-55, D-240, 2S-140,

IAP, AD

2D-503 PCR 1557 F/A/X/T HIRL

RWY 09: ODALS. PAPI(P4L)—GA 3.0° TCH 50'. 0.3% up.

RWY 27: MALSR. PAPI(P4L)—GA 3.0° TCH 55'. 0.4% down.

RWY 03-21: H5228X75 (ASPH-PFC) S-59, D-88, 2D-159

PCR 112 F/D/X/T MIRL 0.3% up NE

RWY 03: REIL. PAPI(P2L)—GA 3.0° TCH 30'.

RWY 21: REIL. PAPI(P2L)—GA 3.0° TCH 30'.

RUNWAY DECLARED DISTANCE INFORMATION

RWY 03: TORA-5228 TODA-5228 ASDA-5228 LDA-5228

RWY 09: TORA-10000 TODA-10000 ASDA-10000 LDA-10000

RWY 21: TORA-5228 TODA-5228 ASDA-5228 LDA-5228

RWY 27: TORA-10000 TODA-10000 ASDA-10000 LDA-10000

SERVICE: S2 FUEL 100LL, JET A1+ OX 3, 4 LGT ACTVT MALSR Rwy 27; ODALS Rwy 09; REIL Rwy 03 & 21, HIRL Rwy 09-27 & twy lgts—CTAF. PAPI Rwy 09, 27, 03 and 21 opr constly.

AIRPORT REMARKS: Attended 1100-0500Z†. Class I, ARFF Index A. PPR for air carrier ops with gtr than 30 pax seats 0500Z-1100Z† call arpt ops - 307-352-6888. ARFF Index C avbl with 30 min notice - 307-352-6888.

AIRPORT MANAGER: 307-352-6880

WEATHER DATA SOURCES: ASOS 118.375 (307) 362-2541. SAWRS.

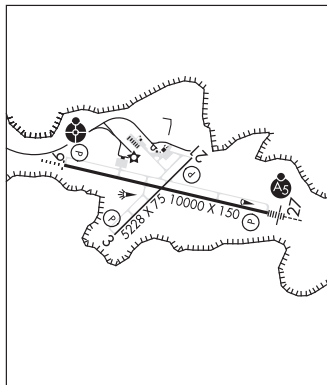
COMMUNICATIONS: CTAF/UNICOM 122.8

ROCK SPRINGS RCO 122.2 (CASPER RADIO)

® SALT LAKE CENTER APP/DEP CON 124.35

CLEARANCE DELIVERY PHONE: For CD if una to ctc on FSS freq, ctc Salt Lake ARTCC at 801-320-2568.

AIRSPACE: CLASS E.



CONTINUED ON NEXT PAGE

CONTINUED FROM PRECEDING PAGE

RADIO AIDS TO NAVIGATION: NOTAM FILE RKS.

ROCK SPRINGS (VH) (DH) VORW/DME 116.0 OCS Chan 107 N41°35.41' W109°00.92' 263° 2.3 NM to fld.
6785/13E.

VOR unusable:

- 000°-007° byd 40 NM
- 008°-018° byd 40 NM blo 12,000'
- 008°-018° byd 62 NM
- 035°-045° byd 40 NM blo 9,500'
- 035°-045° byd 46 NM blo 11,200'
- 035°-045° byd 71 NM blo 18,000'
- 046°-060° byd 40 NM
- 066°-076° byd 40 NM blo 18,000'
- 078°-087° byd 40 NM
- 088°-098° byd 40 NM blo 21,000'
- 099°-110° byd 40 NM blo 18,000'
- 111°-121° byd 40 NM blo 12,000'
- 111°-121° byd 56 NM
- 122°-134° byd 40 NM blo 18,000'
- 135°-145° byd 40 NM
- 186°-195° byd 25 NM blo 14,000'
- 250°-258° byd 40 NM blo 18,000'
- 259°-267° byd 40 NM blo 15,000'
- 259°-267° byd 85 NM
- 268°-277° byd 40 NM blo 11,000'
- 268°-277° byd 55 NM blo 16,000'

DME unusable:

- 122°-127° byd 25 NM blo 12,000'

VOR unusable:

- 268°-277° byd 85 NM

ILS/DME 109.3 I-RKS Chan 30 Rwy 27. Class 1E.

SARATOGA

SHIVELY FLD (SAA)(KSAA) 1 SW UTC-7(-6DT) N41°26.61' W106°49.65'

7014 B NOTAM FILE CPR

RWY 05-23: H8801X100 (ASPH-GRVD) S-50 PCN 50 F/D/X/U MIRL

RWY 05: REIL. PAPI(P4L)—GA 3.0° TCH 49'. 1.8% down.

RWY 23: REIL. PAPI(P4L)—GA 3.0° TCH 47'. 1.8% up.

SERVICE: FUEL 100LL, JET A LGT ACTVT REIL Rwy 05 and Rwy 23;
PAPI Rwy 05 and Rwy 23; MIRL Rwy 05-23—CTAF.

AIRPORT REMARKS: Attended 1500-0000Z±. Full svc fuel. Aft hrs call
307-326-8344. Antelope may be on rwy. Wind shear over highway
approach end of Rwy 23. Lndg fee: turbine & jet acft only. Fees vary
based on cat of acft.

AIRPORT MANAGER: 307-326-8344

WEATHER DATA SOURCES: AWOS-3PT 118.175 (307) 326-5387.

COMMUNICATIONS: CTAF/UNICOM 122.8

Ⓡ DENVER CENTER APP/DEP CON 132.1

CLEARANCE DELIVERY PHONE: For CD ctc Denver ARTCC at 303-651-4257.

RADIO AIDS TO NAVIGATION: NOTAM FILE CPR.

CHEROKEE (VH) (H) VORW/DME 115.0 CKW Chan 97 N41°45.34'
W107°34.92' 104° 38.8 NM to fld. 7050/15E.

VOR unusable:

- 000°-015° byd 40 NM
- 082°-085° byd 40 NM
- 114°-116° byd 40 NM
- 125°-135° byd 40 NM

CHEYENNE
H-3E, L-9E, 11E
IAP

