

VOR/DME VCT	APP CRS	Rwy Idg	9111
109.0	127°	TDZE	115
Chan 27		Apt Elev	115

VOR RWY 13

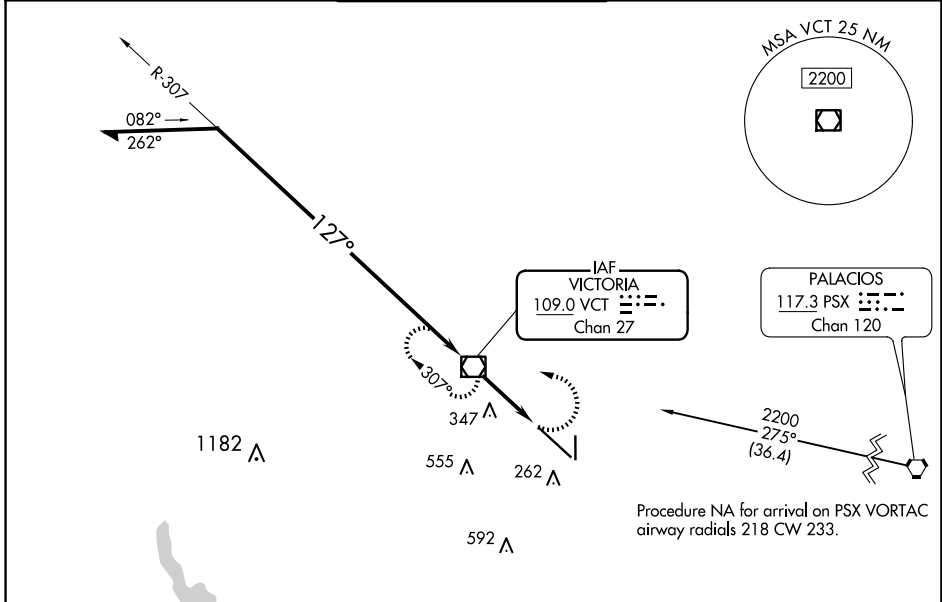
VICTORIA RGNL (VCT)

⚠ For inop ALS, increase Cat C/D/E visibility to 1 3/8 SM.

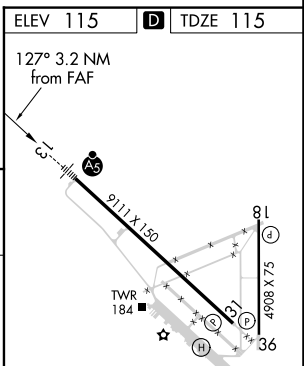
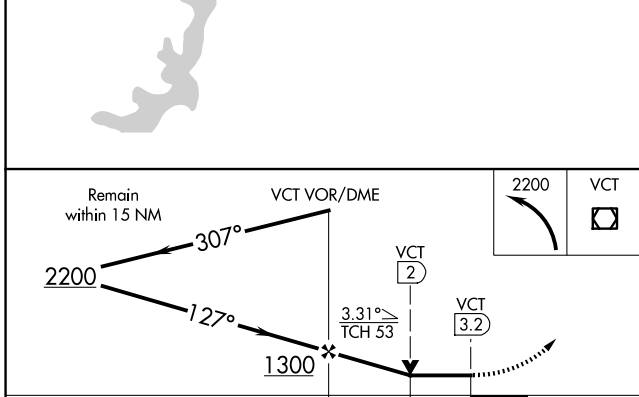
MALSR

MISSED APPROACH:
Climbing left turn to 2200
direct VCT VOR/DME and
hold, continue climb-in-hold
to 2200.

ATIS 119.025	HOUSTON CENTER 135.05 353.6	VICTORIA TOWER ★ 126.075 (CTAF) 0 257.95	GND CON 120.525 239.25	UNICOM 122.7
------------------------	---------------------------------------	--	----------------------------------	------------------------



Procedure NA for arrival on PSX VORTAC
airway radials 218 CW 233.



ELEV 115 **D** TDZE 115

MIRL Rwy 18-36
REIL Rwy 18 and 36
HIRL Rwy 13-31 **I**

FAF to MAP 3.2 NM

Knots	60	90	120	150	180
Min:Sec	3:12	2:08	1:36	1:17	1:04

CATEGORY	A	B	C	D	E
S-13	600-1/2	485 (500-1/2)	600-1	485 (500-1)	
C CIRCLING	600-1	485 (500-1)	820-2 705 (800-2)	880-2 1/2 765 (800-2 1/2)	NA

SC-5, 20 FEB 2025 to 20 MAR 2025

SC-5, 20 FEB 2025 to 20 MAR 2025