

# RNAV (GPS) RWY 18

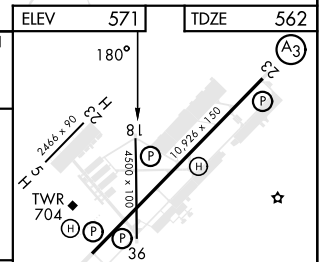
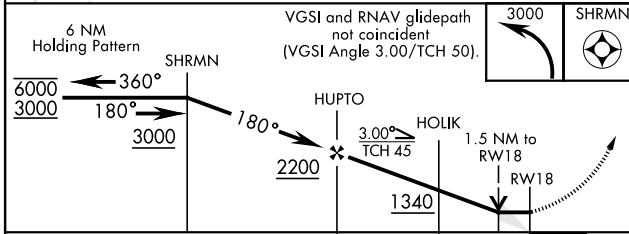
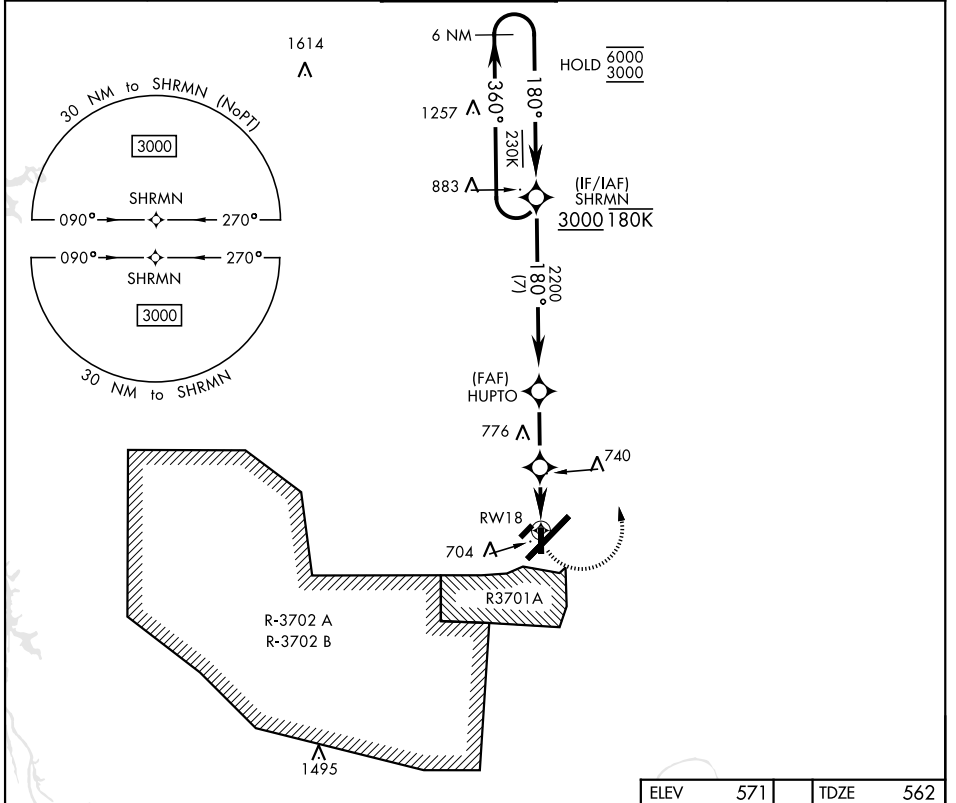
APCH CRS	Rwy Idg	4500
180°	TDZE	562
	Arprt Elev	571

[USA]

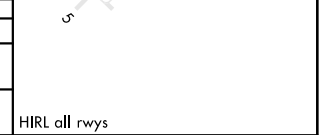
CAMPBELL AAF (KHOP)

RNAV1 - GPS		MISSED APPROACH: Climbing left turn to 3000 direct SHRMN and hold.
DME required		
▼ * Circling NA SE of RWY 5-23.		

ATIS	APP CON	TOWER	GND CON	CLNC DEL	ASR/PAR
125.175 308.4	118.1 269.525	120.9 278.8	121.8 266.8	138.8	



CATEGORY	A	B	C	D
LNVA MDA	1080-1	518 (600-1)	1080-1 $\frac{3}{8}$ 518 (600-1 $\frac{3}{8}$ )	NA
CIRCLING*	1080-1	509 (600-1)	1080-1 $\frac{1}{2}$ 509 (600-1 $\frac{1}{2}$ )	NA



# RNAV (GPS) RWY 18

SE-1, 20 FEB 2025 to 20 MAR 2025

SE-1, 20 FEB 2025 to 20 MAR 2025