

# RNAV (GPS) RWY 23

WAAS Chan <b>56203</b> <b>W23A</b>	APCH CRS <b>225°</b>	Rwy Idg <b>10,926</b> TDZE <b>571</b> Arprt Elev <b>571</b>
--	-------------------------	---

[USA]

CAMPBELL AAF (KHOP)

RNP APCH - GPS

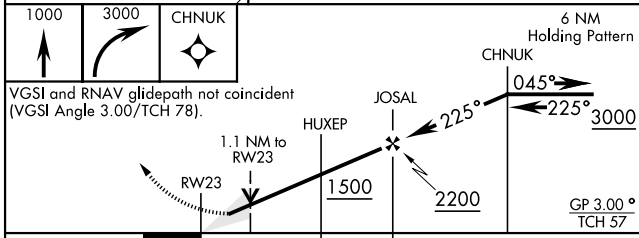
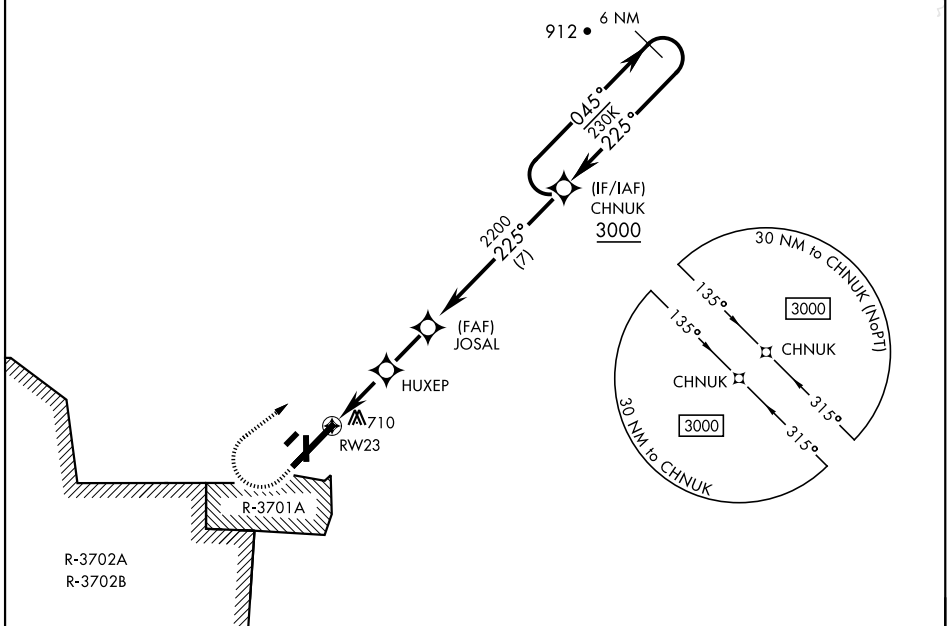
\* When ALS inop, increase RVR to 40, vis to 3/4 mile.  
 \*\* When ALS inop, increase RVR to 55, vis to 1 mile.  
 \*\*\* When ALS inop, increase CAT AB RVR to 55, vis to 1 mile,  
 CAT CDE RVR to 60, vis to 1 1/2 miles.  
 \*\*\*\* Circling NA SE of Rwy 5-23.



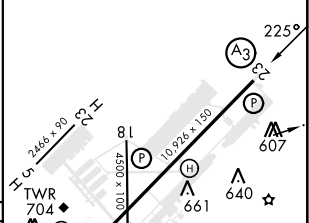
MISSED APPROACH: Climb to 1000 then climbing right turn to 3000 direct CHNUK and hold.

ATIS <b>125.175 308.4</b>	APP CON <b>118.1 269.525</b>	TOWER <b>120.9 278.8</b>	GND CON <b>121.8 266.8</b>	CLNC DEL <b>138.8</b>	ASR/PAR
------------------------------	---------------------------------	-----------------------------	-------------------------------	--------------------------	---------

For uncompensated BARO-VNAV systems, LNAV/VNAV NA below -19°C (-2°F) or above 54°C (130°F).



ELEV	571	TDZE	571
------	-----	------	-----



CATEGORY	A	B	C	D	E
LPV DA *	771/24		200	(200-1/2)	
LNAV/VNAV DA **	949/35		378	(400-3/4)	
LNAV MDA ***	960/24	389 (400-1/2)	960/35		389 (400-3/4)
**** CIRCLING	1060-1	489 (500-1)	1060-1 1/2 489 (500-1 1/2)	1140-2	569 (600-2)

HIRL all rwy's

# RNAV (GPS) RWY 23

SE-1, 20 FEB 2025 to 20 MAR 2025

SE-1, 20 FEB 2025 to 20 MAR 2025