

TACAN RWY 23

TACAN HXW Chan 96	APCH CRS 228°	Rwy Idg 10,926 TDZE 571 Arprt Elev 571
----------------------	-------------------------	---

[USA]

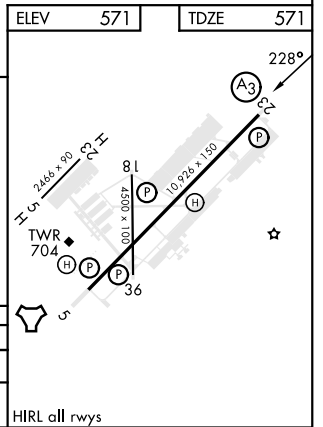
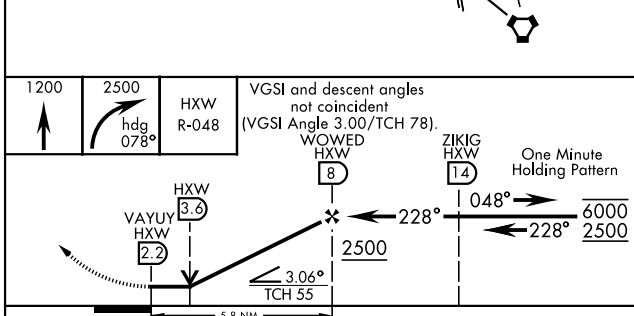
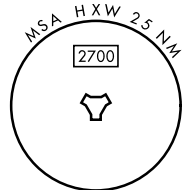
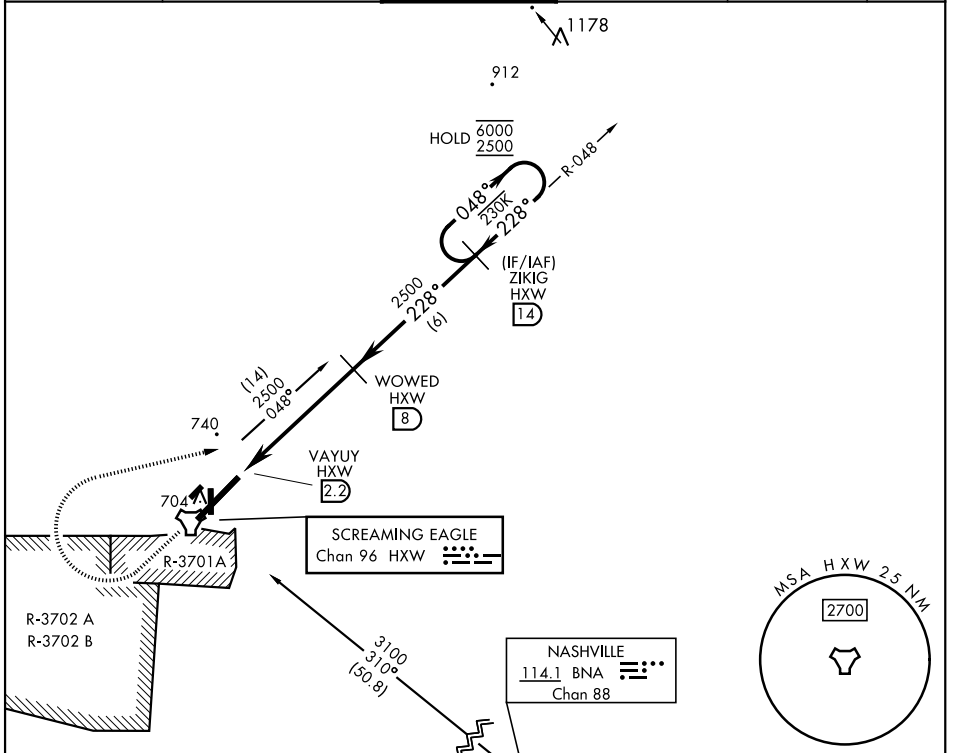
CAMPBELL AAF (KHOP)

▼ * When ALS inop, increase CAT AB RVR to 55, vis to 1 mile; CAT CDE vis to 1½ mile.
 ** Circling not authorized SE of Rwy 5-23.



MISSED APPROACH: Climb to 1200 then climbing right turn to 2500 on hdg 078° and HXW TACAN R-048 to ZIKIG/HXW 14 DME and hold.

ATIS 125.175 308.4	APP CON 118.1 269.525	TOWER 120.9 278.8	GND CON 121.8 266.8	CLNC DEL 138.8	ASR/PAR
------------------------------	---------------------------------	-----------------------------	-------------------------------	--------------------------	---------



CATEGORY	A	B	C	D	E
S-23 *	1080/24	509 (600-¾)	1080/55	509 (600-1¼)	
CIRCLING **	1080-1	509 (600-1)	1080-1½ 509 (600-1½)	1140-2	569 (600-2)

FORT CAMPBELL, KENTUCKY 36° 40' N - 87° 30' W CAMPBELL AAF (KHOP)

Amdt 1 23MAR23

TACAN RWY 23

SE-1, 20 FEB 2025 to 20 MAR 2025

SE-1, 20 FEB 2025 to 20 MAR 2025