

APP CRS	Rwy Idg	2994
057°	TDZE	87
	Apt Elev	87

RNAV (GPS) RWY 6

OLD BRIDGE (3N6)

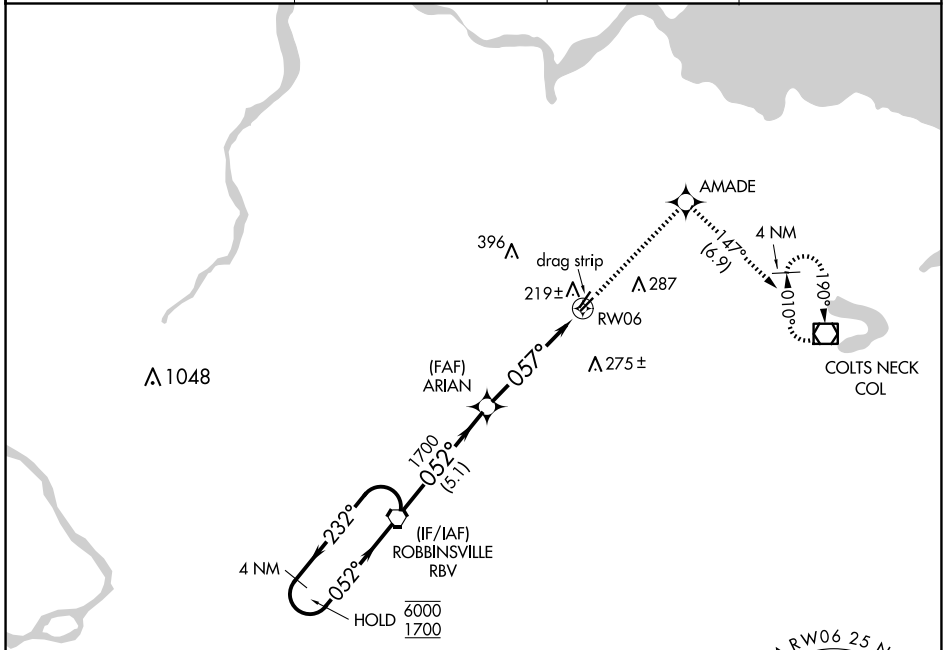
RNP APCH.

⚠ Procedure NA at night. Rwy 6 helicopter visibility reduction below 1 SM NA.

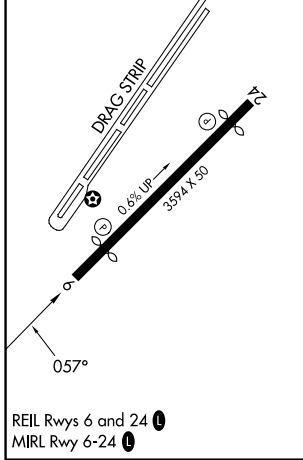
⚠ NA Use Belmar/Farmingdale altimeter setting; when not received, use Wrightstown altimeter setting and increase all MDA 20 feet.

MISSED APPROACH: Climb to 2000 direct AMADE and on track 147° to COL VOR/DME and hold.

BLM AWOS-3PT 121.625	MC GUIRE APP CON 126.475 363.8	GCO 121.725	UNICOM 123.075 (CTAF) 📻
--------------------------------	--	-----------------------	--

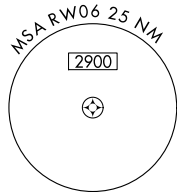


ELEV 87	TDZE 87
----------------	----------------



OLD BRIDGE, NEW JERSEY
Orig-C 15AUG19

NoPT for arrival on RBV VORTAC airway radials 238 CW 289.



Visual Segment - Obstacles.				2000	AMADE	tr 147°	COL
4 NM Holding Pattern				↑	✦		◻
RBV VORTAC				ARIAN		RWY 06	
6000	← 232°	→ 052°	1700	→ 057°			
		5.1 NM		4.9 NM			
CATEGORY	A	B	C	D			
LNAV MDA	660-1 573 (600-1)		NA				

NE-2, 20 FEB 2025 to 20 MAR 2025

NE-2, 20 FEB 2025 to 20 MAR 2025