

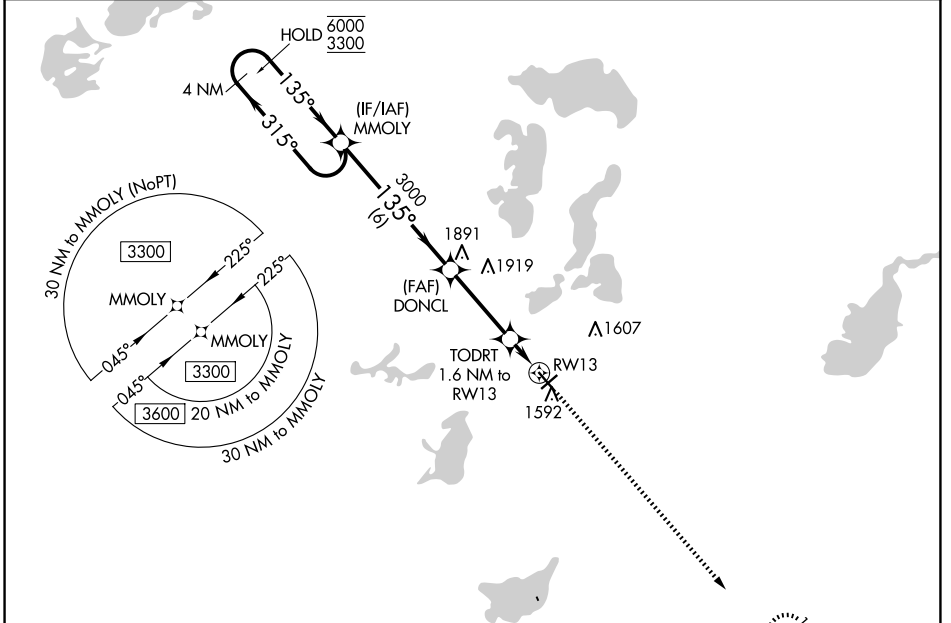
WAAS CH <b>50245</b> <b>W13A</b>	APP CRS <b>135°</b>	Rwy Idg TDZE Apt Elev	<b>5099</b> <b>1424</b> <b>1425</b>
--	------------------------	-----------------------------	---

# RNAV (GPS) RWY 13

ALEXANDRIA RGNL/CHANDLER FLD (A.XN)

RNP APCH - GPS.	MISSED APPROACH: Climb to 3600 direct WUNYE and hold.
<p>▼ For uncompensated Baro-VNAV systems, LNAV/VNAV NA below -24°C or above 54°C.</p>	

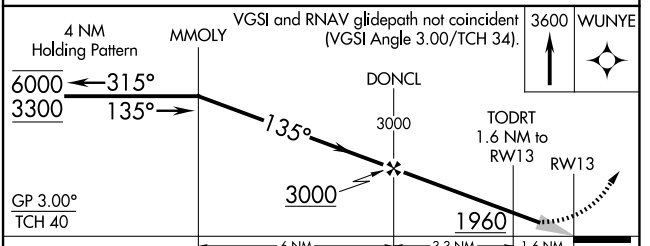
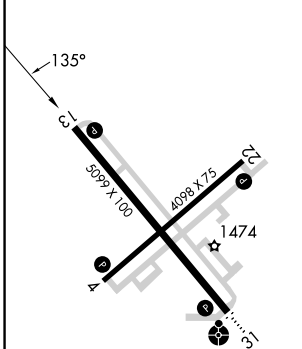
ASOS <b>118.375</b>	MINNEAPOLIS CENTER <b>126.1 269.2</b>	UNICOM <b>123.0 (CTAF) 0</b>
------------------------	--	---------------------------------



NC-1, 20 MAR 2025 to 17 APR 2025

NC-1, 20 MAR 2025 to 17 APR 2025

ELEV 1425	TDZE 1424
-----------	-----------



CATEGORY	DISTANCE (NM)			
	A	B	C	D
LPV DA	1674-1		250 (300-1)	
LNAV/VNAV DA	1721-1		297 (300-1)	
LNAV MDA	1800-1		376 (400-1)	
CIRCLING	1900-1 475 (500-1)		1940-1½ 515 (600-1½)	
			2000-2 575 (600-2)	

REIL Rws 4, 13, and 22 0  
MIRL Rws 4-22 and 13-31 0