

VOR/DME AXN 115.95 Chan 106(Y)	APP CRS 224°	Rwy Idg TDZE 1423 Apt Elev 1425
--	------------------------	---

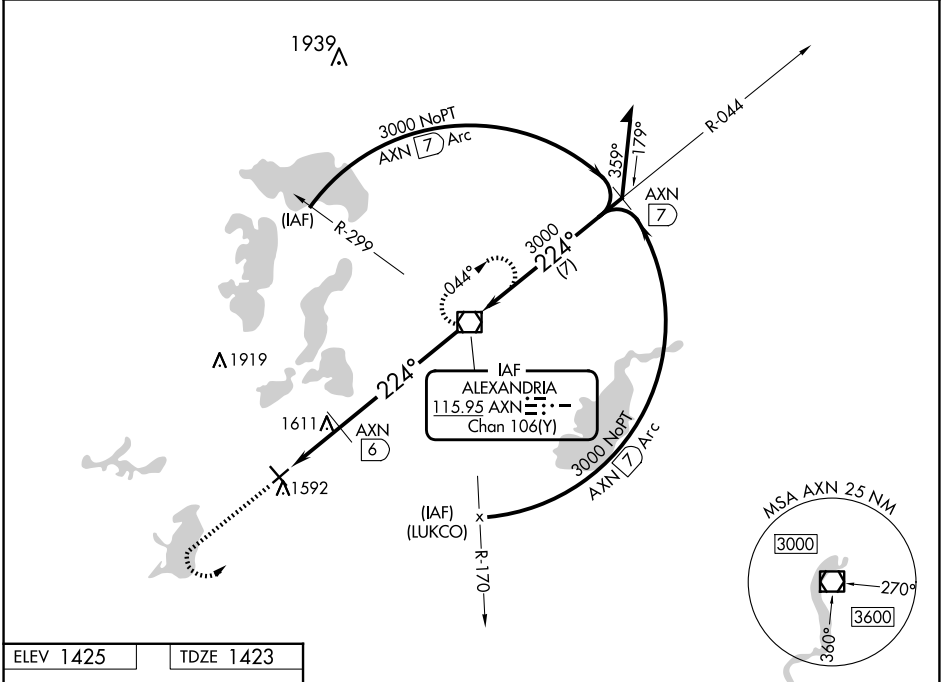
VOR RWY 22

ALEXANDRIA RGNL/CHANDLER FLD (AXN)

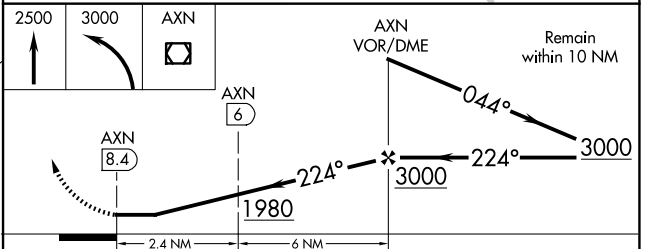
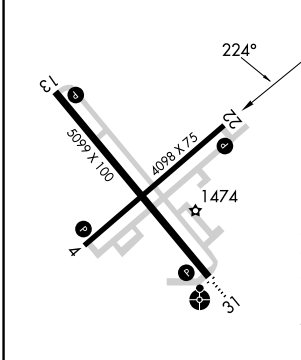
▼ Rwy 22 helicopter visibility reduction below $\frac{3}{4}$ SM NA.

MISSED APPROACH: Climb to 2500 then climbing left turn to 3000 direct to AXN VOR/DME and hold.

ASOS 118.375	MINNEAPOLIS CENTER 126.1 269.2	UNICOM 123.0 (CTAF) 0
------------------------	--	---------------------------------



ELEV 1425	TDZE 1423
-----------	-----------



CATEGORY	A		B		C		D	
	S-22	1980-1	557 (600-1)	1980-1 1/2	557 (600-1 1/2)	1980-1 1/2	557 (600-1 1/2)	1980-1 3/4
CIRCLING	1980-1	555 (600-1)	1980-1 1/2	555 (600-1 1/2)	2000-2	575 (600-2)	2000-2	575 (600-2)
DME MINIMUMS								
S-22	1880-1	457 (500-1)	1880-1 1/4	457 (500-1 1/4)	1880-1 1/2	457 (500-1 1/2)	1880-1 1/2	457 (500-1 1/2)
CIRCLING	1920-1	495 (500-1)	1940-1 1/2	515 (600-1 1/2)	2000-2	575 (600-2)	2000-2	575 (600-2)

REIL Rwy 4, 13, and 22 **0**
MIRL Rwy 4-22 and 13-31 **0**

FAF to MAP 8.4 NM

Knots	60	90	120	150	180
Min:Sec	8:24	5:36	4:12	3:22	2:48

NC-1, 20 MAR 2025 to 17 APR 2025

NC-1, 20 MAR 2025 to 17 APR 2025