

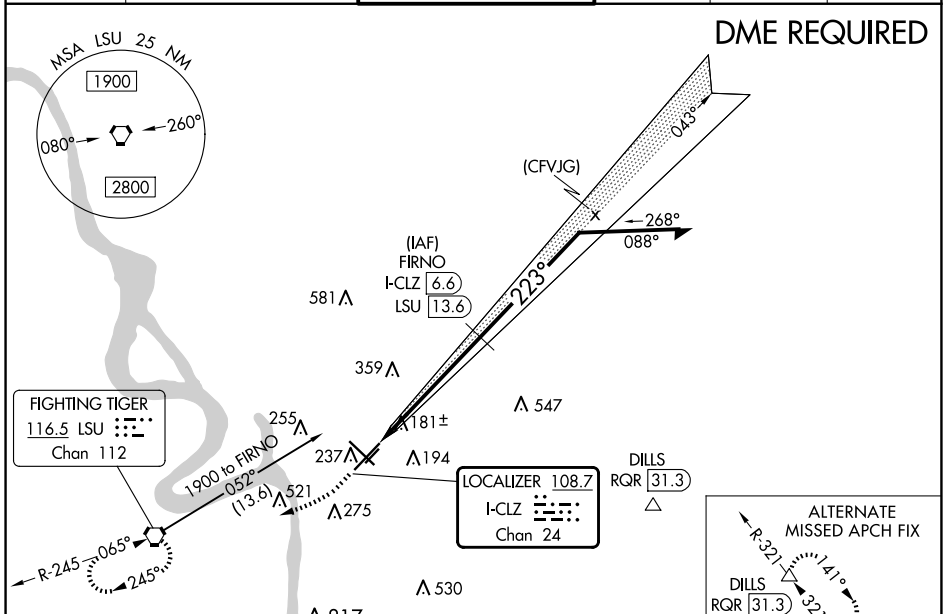
LOC/DME I-CLZ <b>108.7</b> Chan <b>24</b>	APP CRS <b>223°</b>	Rwy Idg <b>7500</b> TDZE <b>70</b> Apt Elev <b>70</b>
---	------------------------	---

# ILS RWY 22R (SA CAT I & II)

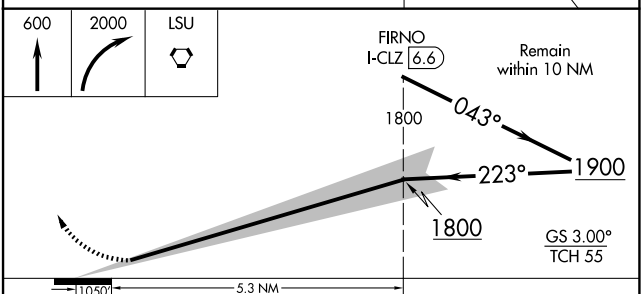
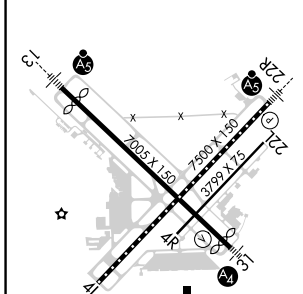
BATON ROUGE METRO, RYAN FLD (BTR)

<p>SA CAT I: Requires specific OPSPEC, MSPEC, or LOA approval and use of HUD to DH. SA CAT II: Reduced lighting: Requires specific OPSPEC, MSPEC, or LOA approval and use of autoland or HUD to touchdown. SA CAT I/II: Procedure NA when tower closed.</p>	<p>MALS R</p>	<p>MISSED APPROACH: Climb to 600 then climbing right turn to 2000 direct LSU VORTAC and hold.</p>

ATIS <b>125.2</b>	BATON ROUGE APP CON * <b>120.3 278.3</b>	RYAN TOWER * <b>118.45 (CTAF) 257.8</b>	GND CON <b>121.9</b>	CLNC DEL <b>119.4</b>	UNICOM <b>122.95</b>
----------------------	---	--	-------------------------	--------------------------	-------------------------



ELEV 70	<b>D</b>	TDZE 70
---------	----------	---------



CATEGORY	A	B	C	D
S-ILS 22R	SA CAT I	RA 163/14	150 DA 220	
S-ILS 22R	SA CAT II	RA 106/12	100 DA 170	

**SA CATEGORY I & II ILS - SPECIAL AIRCREW & AIRCRAFT CERTIFICATION REQUIRED**

SC-4, 20 MAR 2025 to 17 APR 2025

SC-4, 20 MAR 2025 to 17 APR 2025