

| | | |
|--|------------------------|--|
| WAAS CH 61220 W05A | APP CRS 047° | Rwy Idg 10004 TDZE 952 Apt Elev 952 |
|--|------------------------|--|

RNAV (GPS) RWY 5L

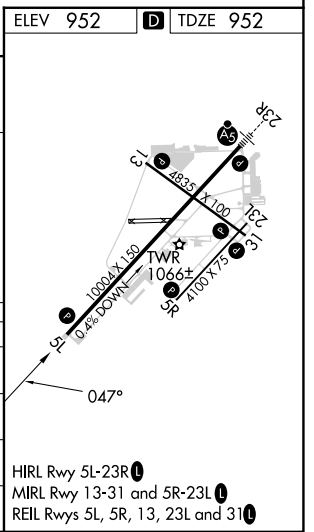
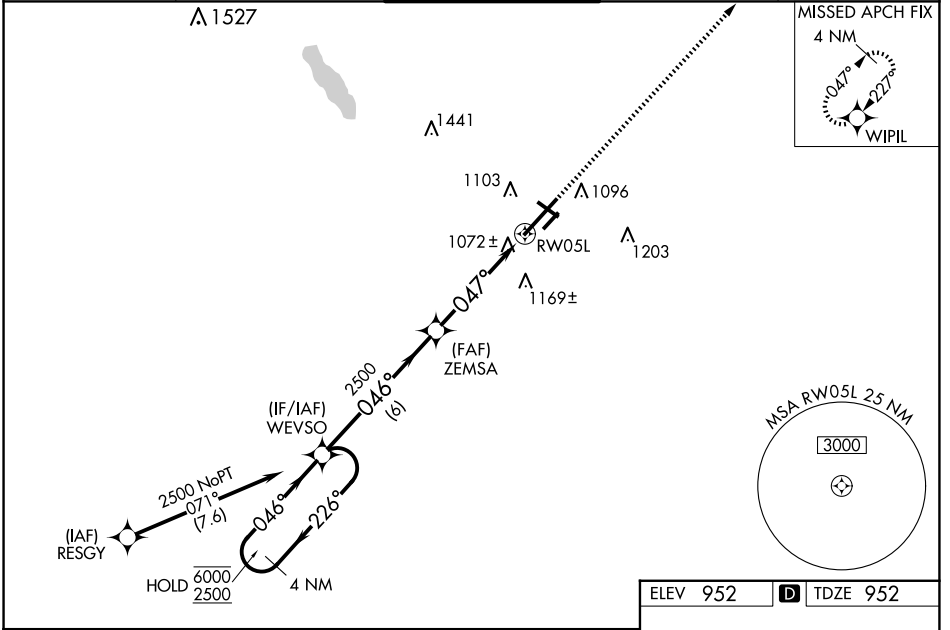
BATTLE CREEK EXEC AT KELLOGG FLD (BTL)

RNP APCH - GPS

⚠ For uncompensated Baro-VNAV systems, LNAV/VNAV NA below -16°C or above 54°C. Circling to Rwy 5R, 23L and 31 NA at night. When local altimeter setting not received, use Grand Rapids altimeter setting and increase LPV DA to 1425 feet and all visibilities 3/8 SM; increase LNAV/VNAV DA to 1361 feet and all visibilities 1/4 SM; increase all MDAs 120 feet and LNAV visibility Cat C and D 3/8 SM and Circling visibility Cat C and D 1/2 SM. VDP and Baro-VNAV NA when using Grand Rapids altimeter setting. Rwy 5L helicopter visibility reduction below 3/4 SM NA.

MISSED APPROACH:
Climb to 2500 direct
WIPIL and hold.

| | | | | |
|------------------------|---|---|-------------------------|-------------------------|
| ATIS 128.325 | GREAT LAKES APP CON* 119.2 239.25 | BATTLE CREEK TOWER* 126.825 (CTAF) | GND CON 121.7 | UNICOM 122.95 |
|------------------------|---|---|-------------------------|-------------------------|



| CATEGORY | A | B | C | D |
|-----------------|-----------------------|-----------------------|-------------------------------|-----------------------|
| LPV DA | | 1317-1 | 365 (400-1) | |
| LNAV/VNAV DA | | 1253-7/8 | 301 (400-7/8) | |
| LNAV MDA | 1440-1 | 488 (500-1) | 1440-13/8 | 488 (500-13/8) |
| CIRCLING | 1440-1 488 (500-1) | 1480-1 528 (600-1) | 1520-1 1/2 568 (600-1 1/2) | 1520-2 568 (600-2) |

HIRL Rwy 5L-23R **Ⓢ**
MIRL Rwy 13-31 and 5R-23L **Ⓢ**
REIL Rws 5L, 5R, 13, 23L and 31 **Ⓢ**

EC-1, 20 MAR 2025 to 17 APR 2025

EC-1, 20 MAR 2025 to 17 APR 2025