

# HI-ILS Z or LOC Z RWY 10R

LOC I-BOI <b>111.1</b>	APCH CRS <b>102°</b>	Rwy Ldg TDZE Arpt Elev <b>9762</b> <b>2836</b> <b>2872</b>
---------------------------	-------------------------	---

[USAF]

BOISE AIR TERMINAL (GOWEN FLD) (KBOI)

DME required

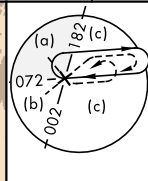


MISSED APPROACH: Climb to 7300 on BOI VORTAC R-113 to CANEK/BOI 22 DME and hold.

When ALS inop, increase RVR to 40 and vis to 3/4 mile.  
When ALS inop, increase RVR to 55 and vis to 1 mile.

ATIS <b>123.9 290.4</b>	BIG SKY APP CON <b>119.6 269.4</b>	BOISE TOWER <b>118.1 257.8</b>	GND CON <b>121.7 348.6</b>	CLNC DEL <b>125.9 323.2</b>	ASOS
----------------------------	---------------------------------------	-----------------------------------	-------------------------------	--------------------------------	------

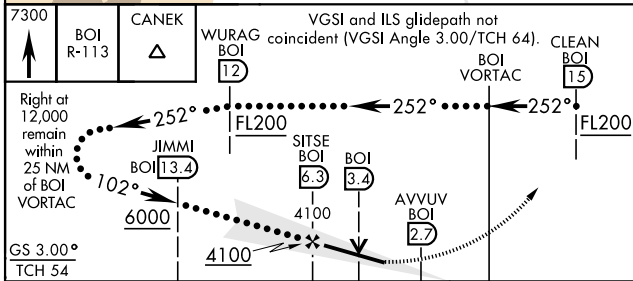
\*\*\* Circling not authorized N of Rwy 10L-28R.



NW-1, 20 MAR 2025 to 17 APR 2025

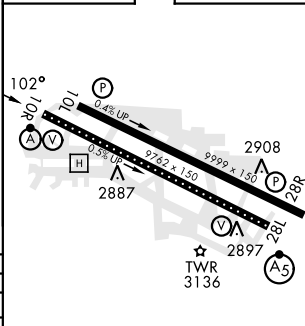
NW-1, 20 MAR 2025 to 17 APR 2025

EMERG SAFE ALT 100 NM 14,000



ELEV	2872	TDZE	2836
------	------	------	------

CATEGORY	C	D	E
S-ILS 10R **	3036/18	200	(200-1/2)
S-LOC 10R **	3200/35	364	(400-3/8)
CIRCLING ***	3640-2 1/4 768 (800-2 1/4)	3820-3 948 (1000-3)	3880-3 1008 (1100-3)



TDZL/CL Rwy 10R-28L  
HIRL Rwys 10L-28R, 10R-28L  
REIL Rwy 10L

# HI-ILS Z or LOC Z RWY 10R