

BOISE, IDAHO

VORTAC BOI 113.3 Chan 80	APCH CRS 278°	Rwy Idg 28L 9762 28R 2858 28R 2872	28R 9999 2872
--	-------------------------	--	--------------------------------

HI-VOR Z or TACAN Z RWY 28L

[USAF]

BOISE AIR TERMINAL (GOWEN FLD) (KBOI)

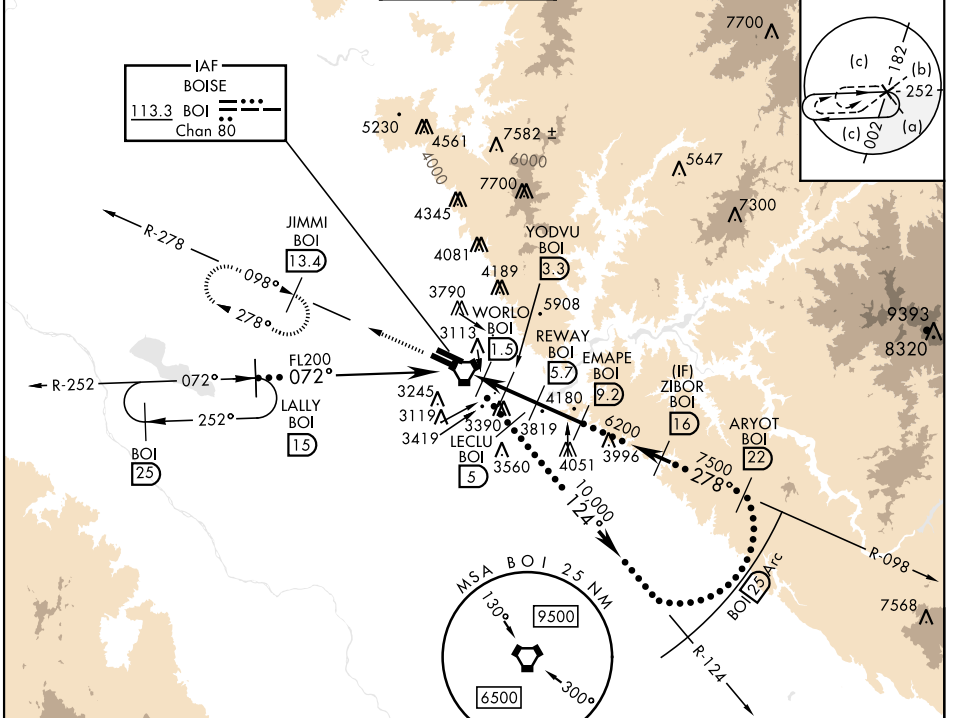
DME required.



MISSED APPROACH: Climb to 6000 on BOI VORTAC
R-278 to JIMMI/13.4 DME and hold.

* When ALS inop, increase vis to 1½ miles.
** Circling not authorized N of Rwy 10L-28R.

ATIS 123.9 290.4	BIG SKY APP CON 119.6 269.4	BOISE TOWER 118.1 257.8	GND CON 121.7 348.6	CLNC DEL 125.9 323.2	ASOS
----------------------------	---------------------------------------	-----------------------------------	-------------------------------	--------------------------------	------

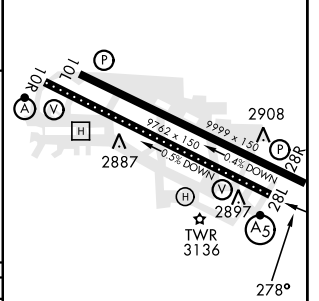
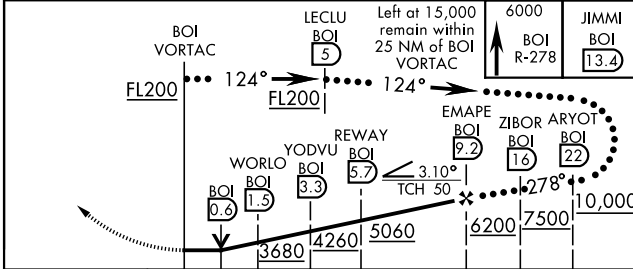


NW-1, 20 MAR 2025 to 17 APR 2025

NW-1, 20 MAR 2025 to 17 APR 2025

EMERG SAFE ALT 100 NM 14,000

ELEV	2872	TDZE 28L	2858
		TDZE 28R	2872



CATEGORY	C		D		E
S-28L *	3380/55		522		(600-1)
SIDESTEP RWY 28R	3380-1½ 508 (600-1½)		3380-2½		508 (600-2½)
CIRCLING **	3620-2¼ 748 (800-2¼)		3820-3 948 (1000-3)		3880-3 1008 (1100-3)

TDZL/CL Rwy 10R-28L
HIRL Rwys 10L-28R, 10R-28L
REIL Rwy 10L

BOISE, IDAHO

43°34'N-116°13'W

BOISE AIR TERMINAL (GOWEN FLD) (KBOI)

Amdt 4 08SEP22

HI-VOR Z or TACAN Z RWY 28L