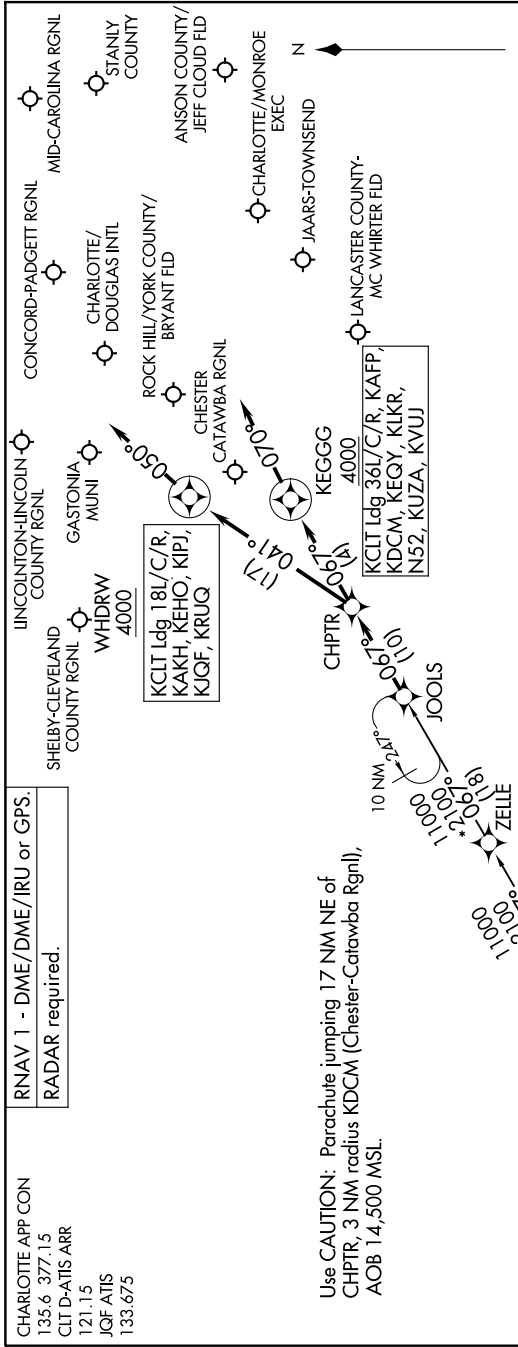


JOOLS ONE ARRIVAL (RNAV)

CHARLOTTE, NORTH CAROLINA

SE-2, 20 MAR 2025 to 17 APR 2025



RNAV 1 - DME/DME/IRU or GPS.
RADAR required.

CHARLOTTE APP CON
135.6 377.15
CLT D-ATIS ARR
121.15
JQG ATIS
133.675

ARRIVAL ROUTE DESCRIPTION

THRSR TRANSITION (THRSR..JOOLS1)
WANSA TRANSITION (WANSA..JOOLS1)

KCLT: From JOOLS on track 067° to CHPTR.
LANDING RUNWAYS 18L/C/R: From CHPTR on track 041° to cross WHDRW at or above 4000, then on track 050°. Expect RADAR vectors to final approach course.
LANDING RUNWAYS 36L/C/R: From CHPTR on track 067° to cross KEGGG at or above 4000, then on track 070°. Expect RADAR vectors to final approach course.
LANDING KAKH/KRUQ/KEHO/KIQF/KIPJ: From JOOLS on track 067° to CHPTR, then on track 041° to cross WHDRW at or above 4000, then on track 050°. Expect RADAR vectors to final approach course.
LANDING KDCM/KEGY/KUZA/KAFP/N52/KVUJ/KLKR: From JOOLS on track 067° to CHPTR, then on track 067° to cross KEGGG at or above 4000, then on track 070°. Expect RADAR vectors to final approach course.

SE-2, 20 MAR 2025 to 17 APR 2025

JOOLS ONE ARRIVAL (RNAV)

CHARLOTTE, NORTH CAROLINA

NOTE: Chart not to scale.