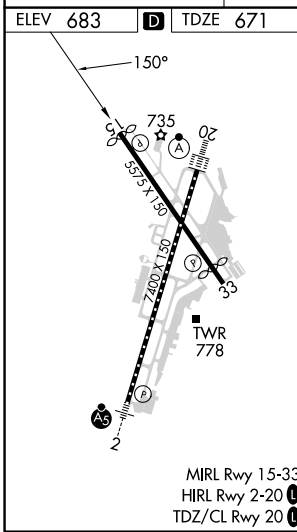
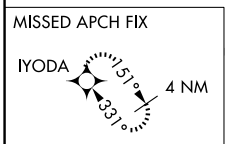
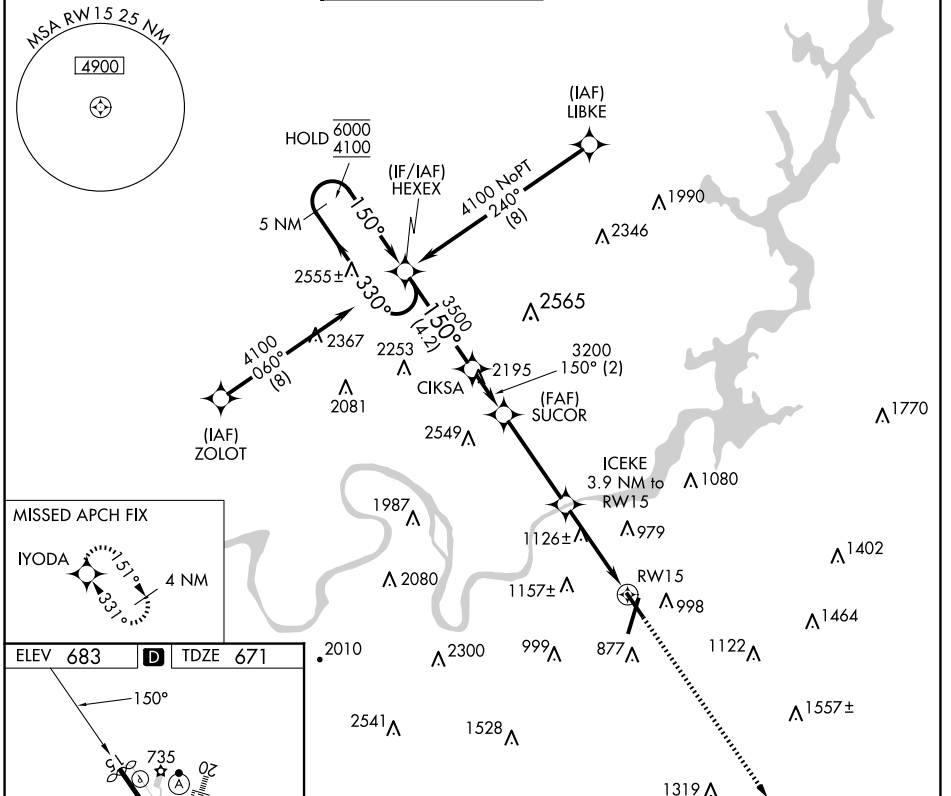


APP CRS	Rwy Idg	<b>5469</b>
<b>150°</b>	TDZE	<b>671</b>
	Apt Elev	<b>683</b>

# RNAV (GPS) RWY 15

LOVELL FLD (CHA)

RNP APCH - GPS.		MISSED APPROACH: Climb to 3300 direct IYODA and hold.			
Straight-In Rwy 15 NA at night, Circling Rwy 15, 33 NA at night. Rwy 15 helicopter visibility reduction below 1 SM NA.					
ATIS	CHATTANOOGA APP CON *	CHATTANOOGA TOWER *	GND CON	CLNC DEL	UNICOM
<b>119.85</b>	<b>125.1 379.1</b>	<b>118.3 (CTAF) 257.8</b>	<b>121.7 348.6</b>	<b>120.95 348.6</b>	<b>122.95</b>



5 NM Holding Pattern	HEXEX	CIKSA	SUCOR	ICEKE	IYODA
6000 ← 330°	4100 → 150°	150°	3200	3.9 NM to RWY 15	3300
				TCH 45	1960
		4.2 NM	2 NM	3.9 NM	3.9 NM
CATEGORY	A	B	C	D	
RNAV MDA	1380-1	709 (700-1)	1380-2	709 (700-2)	
CIRCLING	1380-1	697 (700-1)	1480-2¼ 797 (800-2¼)	1580-3 897 (900-3)	

SE-1, 20 MAR 2025 to 17 APR 2025

SE-1, 20 MAR 2025 to 17 APR 2025