

WAAS CH <b>70305</b> <b>W20A</b>	APP CRS <b>202°</b>	Rwy Idg TDZE Apt Elev	<b>7400</b> <b>673</b> <b>683</b>
--	------------------------	-----------------------------	---

# RNAV (GPS) RWY 20

LOVELL FLD (CHA)

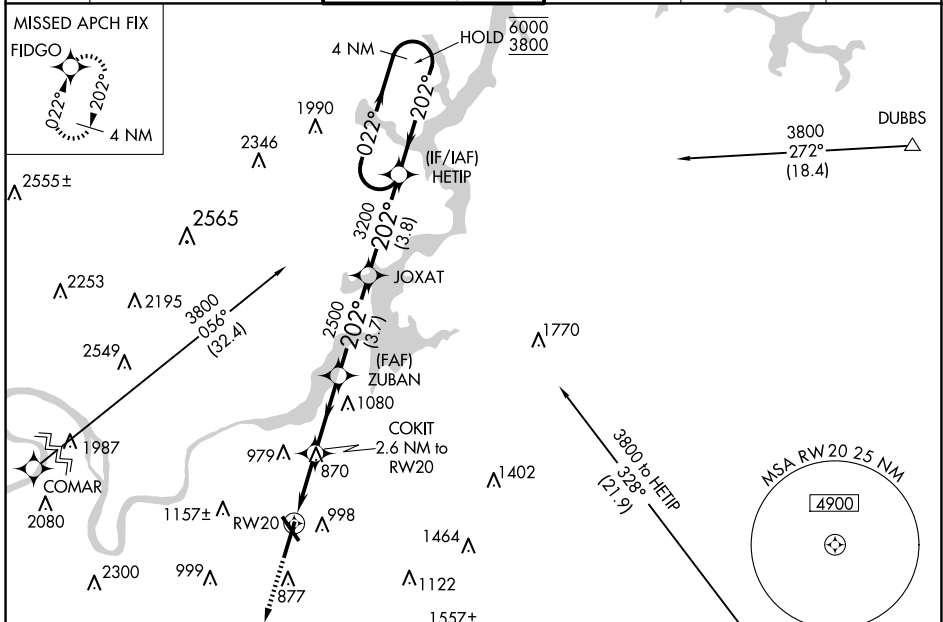
RNP APCH - GPS.

**⚠** Circling Rwy 15, 33 NA at night. For uncompensated Baro-VNAV systems, LNAV/VNAV NA below -16°C or above 54°C. For inop ALS, increase LNAV/VNAV all Cats visibility to 1¾ SM and LNAV Cat C and D visibility to 1½ SM.

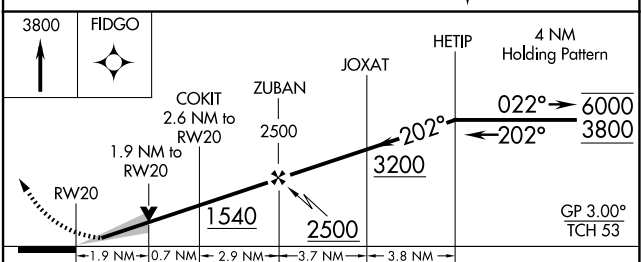
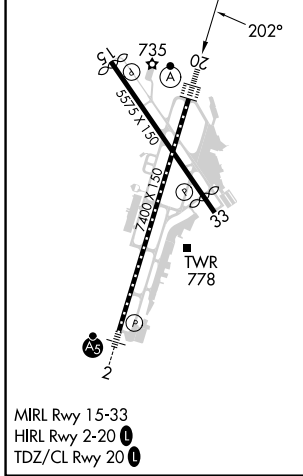
ALSF-2

MISSED APPROACH:  
Climb to 3800 direct  
FIDGO and hold.

ATIS <b>119.85</b>	CHATTANOOGA APP CON * <b>125.1 379.1</b>	CHATTANOOGA TOWER * <b>118.3 (CTAF) 0 257.8</b>	GND CON <b>121.7 348.6</b>	CLNC DEL <b>120.95 348.6</b>	UNICOM <b>122.95</b>
-----------------------	---	--	-------------------------------	---------------------------------	-------------------------



ELEV 683	<b>D</b>	TDZE 673
----------	----------	----------



CATEGORY	A	B	C	D
LPV DA	873/18		200 (200-½)	
LNAV/VNAV DA	1281-1¾		608 (600-1¾)	
LNAV MDA	1340/24	667 (700-½)	1340-1½	667 (700-1½)
<b>C</b> CIRCLING	1340-1	657 (700-1)	1500-2½ 817 (900-2½)	1580-3 897 (900-3)

SE-1, 20 MAR 2025 to 17 APR 2025

SE-1, 20 MAR 2025 to 17 APR 2025