

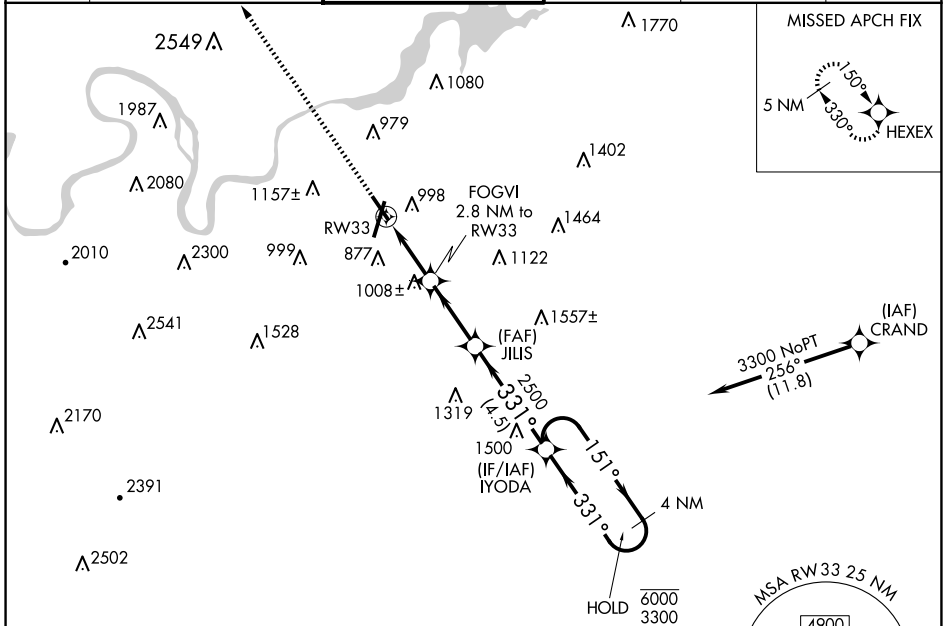
APP CRS 331°	Rwy Idg TDZE Apt Elev	5000 672 683
------------------------	-----------------------------	---

RNAV (GPS) RWY 33

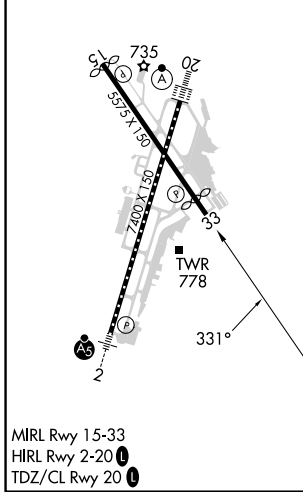
LOVELL FLD (CHA)

RNP APCH - GPS.	MISSED APPROACH: Climb to 4100 direct HEXEX and hold. * Missed approach requires minimum climb of 235 feet per NM to 3000.
Straight-In Rwy 33 NA at night, Circling Rwy 15, 33 NA at night. Rwy 33 helicopter visibility reduction below 1 SM NA.	

ATIS 119.85	CHATTANOOGA APP CON ★ 125.1 379.1	CHATTANOOGA TOWER ★ 118.3 (CTAF) 257.8	GND CON 121.7 348.6	CLNC DEL 120.95 348.6	UNICOM 122.95
-----------------------	---	--	-------------------------------	---------------------------------	-------------------------



ELEV 683	D	TDZE 672
----------	----------	----------



MIRL Rwy 15-33
HIRL Rwy 2-20
TDZ/CL Rwy 20

4100	HEXEX	IYODA 4 NM Holding Pattern	
FOGVI 2.8 NM to RW33 RW33 1600 TCH 40 JILIS 2500 IYODA 3300		151° 6000 ← 331° 3300	
2.8 NM 2.8 NM 4.5 NM			
CATEGORY	A	B	C
LNAV MDA*	1260-1	588 (600-1)	1260-1¾ 588 (600-1¾)
LNAV MDA	1520-1 848 (900-1)	1520-1¼ 848 (900-1¼)	1520-2½ 848 (900-2½)
C CIRCLING	1520-1¼	837 (900-1¼)	1580-3 897 (900-3)

SE-1, 20 MAR 2025 to 17 APR 2025

SE-1, 20 MAR 2025 to 17 APR 2025