

RNAV (GPS) RWY 3

CINCINNATI MUNI/LUNKEN FLD (LUK)

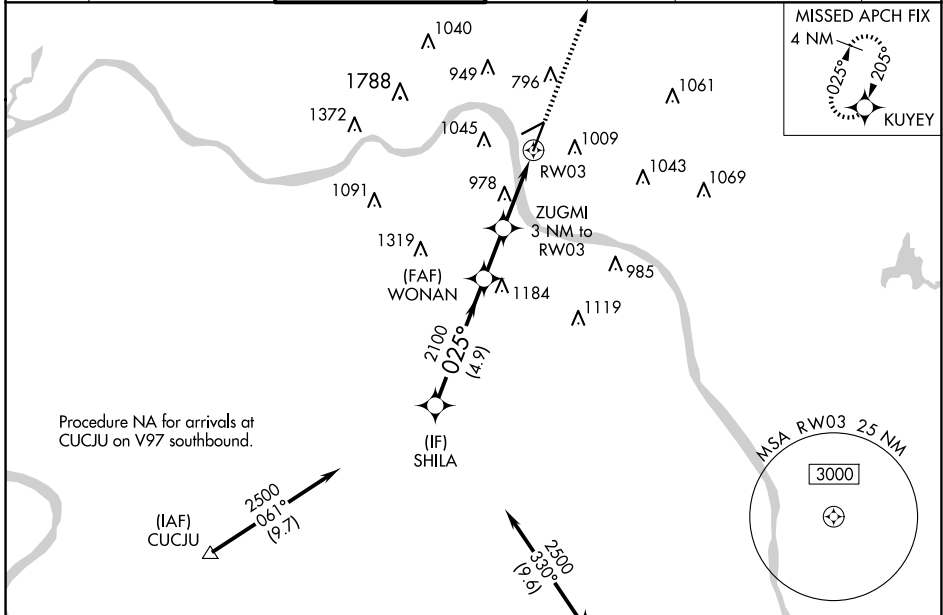
APP CRS	Rwy Idg	6101
025°	TDZE	481
	Apt Elev	482

RNP APCH-GPS.

⚠ Rwy 3 helicopter visibility reduction below $\frac{3}{4}$ SM NA.
 Circling NA for Cat D north of Rwy 7-25. Circling Rwy 7 NA at night.

MISSED APPROACH: Climb to 2600 direct KUYEY and hold.

ATIS	CINCINNATI APP CON	LUNKEN TOWER ★	GND CON	CLNC DEL	CLNC DEL	UNICOM
123.6	121.0 254.25	118.7 (CTAF) 0 257.8	121.9	121.9	124.9 (When twr closed)	122.95



Procedure NA for arrivals at CUCJU on V97 southbound.

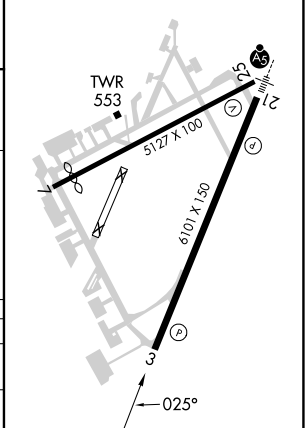
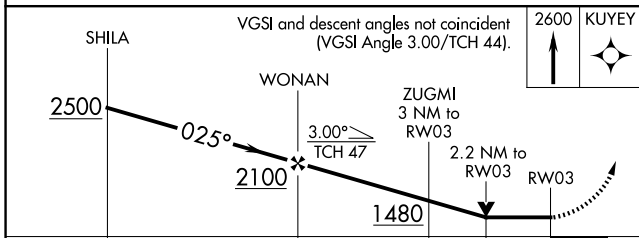
(IAF) CUCJU 2500 061° (9.7)

Procedure NA for arrivals at FLM VOR/DME on V517 southeast bound.

(IAF) LODL 2700 345° (1.0)

FALMOUTH FLM

ELEV	482	D	TDZE	481
REIL Rwy 3				
HIRL Rwy 3-21				
MIRL Rwy 7-25				



	VGSI and descent angles not coincident (VGSI Angle 3.00/TCH 44).		2600	KUYEY
CATEGORY	A	B	C	D
LNVA MDA	1240-1 759 (800-1)	1240-1¼ 759 (800-1¼)	1240-2	759 (800-2)
CIRCLING	1260-1 778 (800-1)	1360-1¼ 878 (900-1¼)	1360-2½ 878 (900-2½)	1400-3 918 (1000-3)

EC-2, 20 MAR 2025 to 17 APR 2025

EC-2, 20 MAR 2025 to 17 APR 2025