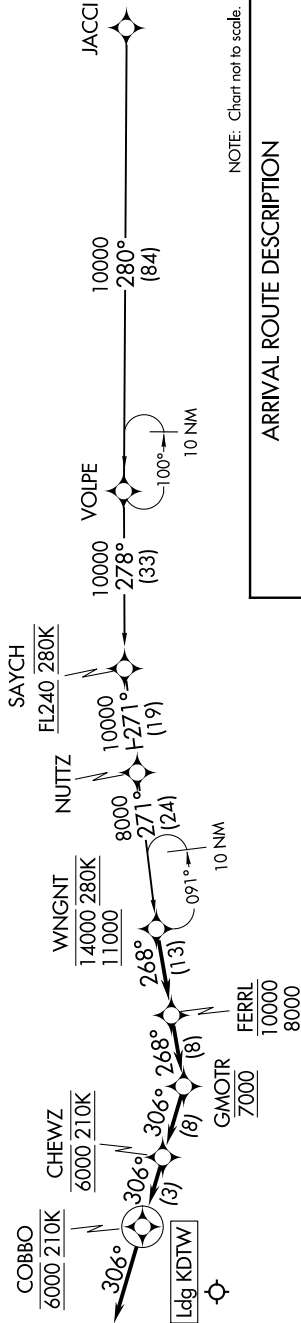


EC-1, 20 MAR 2025 to 17 APR 2025

D-ATIS
133.675
DETROIT APP CON
126.225 284.0

- NOTE: RADAR required.
- NOTE: RNAV 1.
- NOTE: DME/DME/IRU or GPS required.
- NOTE: Expect Rwy 21L.
- NOTE: Jet aircraft descend via Mach number until intercepting 280K. Maintain 280K until slowed by the STAR.
- NOTE: For use when DTW landing south or west. When DTW landing north, file and expect the WNGNT RNAV STAR.



NOTE: Chart not to scale.

ARRIVAL ROUTE DESCRIPTION

JACCI TRANSITION (JACCI.FERRL2)

From WNGNT on track 268° to cross FERRL between 8000 and 10000, then on track 268° to cross GAMOTR at 7000, then on track 306° to cross CHEWZ at 6000 and at 210K, then on track 306° to cross COBBO at 6000 and at 210K, then on track 306°. Expect RADAR vectors to final approach course.

LOST COMMUNICATIONS:

From COBBO, execute ILS Rwy 21L approach.

EC-1, 20 MAR 2025 to 17 APR 2025