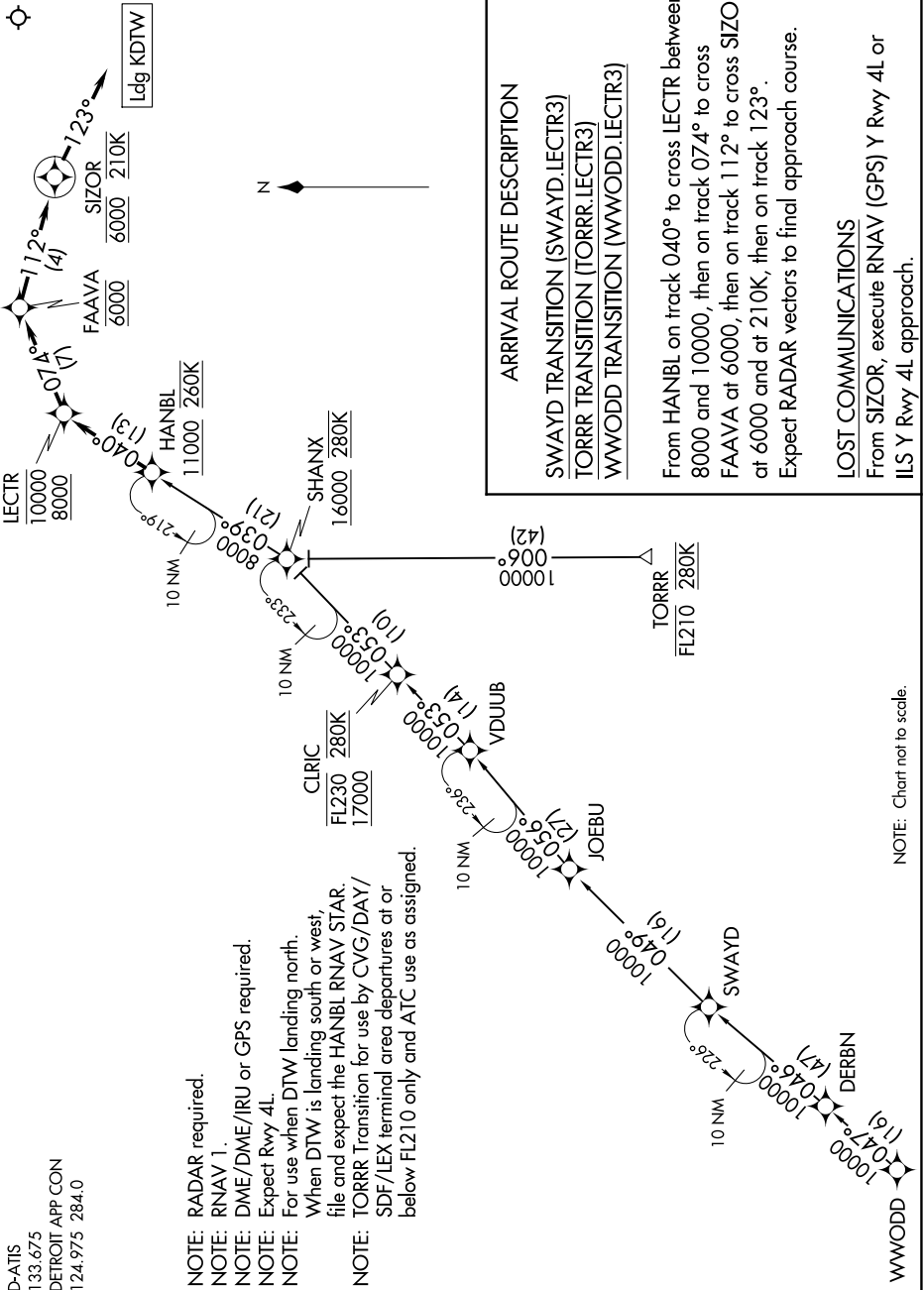


EC-1, 20 MAR 2025 to 17 APR 2025

D-ATIS
133.675
DETROIT APP CON
124.975 284.0

- NOTE: RADAR required.
- NOTE: RNAV 1.
- NOTE: DME/DME/IRU or GPS required.
- NOTE: Expect Rwy 4L.
- NOTE: For use when DTW landing north.
When DTW is landing south or west,
file and expect the HANBL RNAV STAR.
- NOTE: TORRR Transition for use by CVG/DAY/
SDF/LEX terminal area departures at or
below FL210 only and ATC use as assigned.



ARRIVAL ROUTE DESCRIPTION

SWAYD TRANSITION (SWAYD.LECTR3)
TORRR TRANSITION (TORRR.LECTR3)
WWODD TRANSITION (WWODD.LECTR3)

From HANBL on track 040° to cross LECTR between 8000 and 10000, then on track 074° to cross FAAVA at 6000, then on track 112° to cross SIZOR at 6000 and at 210K, then on track 123°.
 Expect RADAR vectors to final approach course.

LOST COMMUNICATIONS
 From SIZOR, execute RNAV (GPS) Y Rwy 4L or ILS Y Rwy 4L approach.

NOTE: Chart not to scale.

EC-1, 20 MAR 2025 to 17 APR 2025