

WAAS CH <b>63004</b> <b>W04B</b>	APP CRS <b>036°</b>	Rwy Idg <b>11494</b> TDZE <b>640</b> Apt Elev <b>645</b>
--	------------------------	--

# RNAV (GPS) Z RWY 4R

DETROIT METRO WAYNE COUNTY (DTW)

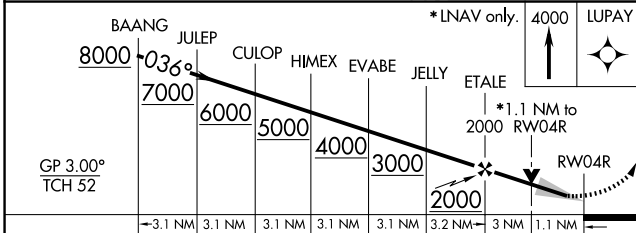
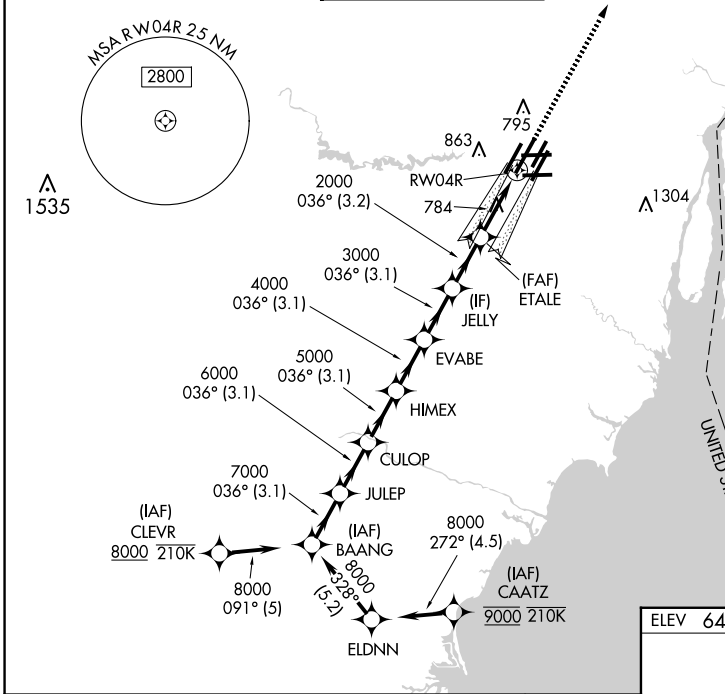
RNP APCH.

Simultaneous approach authorized. LNAV procedure NA during simultaneous operations.  
For uncompensated Baro-VNAV systems, LNAV/VNAV NA below -19° C or above 54° C.  
Use of FD or AP required during simultaneous operations.

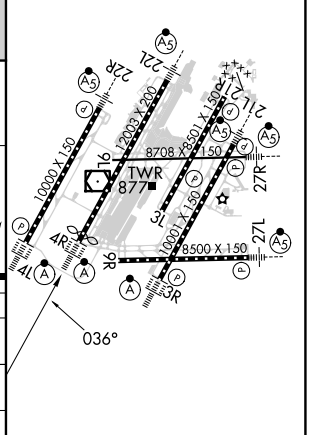
ALSF-2

MISSED APPROACH:  
Climb to 4000 direct  
LUPAY and hold.

D-ATIS <b>133.675</b>	DETROIT APP CON <b>124.05 284.0</b>	METRO TOWER <b>128.125 317.725</b>	GND CON <b>121.8</b> (NW) <b>119.45</b> (NE) <b>132.725</b> (SW) <b>119.25</b> (SE)	CINC DEL <b>120.65</b>	CPDLC
--------------------------	--	---------------------------------------	---	---------------------------	-------



ELEV 645	D	TDZE 640
----------	---	----------



CATEGORY	A	B	C	D
LPV DA	840/18	200 (200-½)		
LNAV/VNAV DA	1021/35	381 (400-¾)		
LNAV MDA	1040/24	400 (400-½)	1040/35	400 (400-¾)
CIRCLING	1180-1	535 (600-1)	1180-1½ 535 (600-1½)	1240-2 595 (600-2)

TDZ/CL Rwys 3R, 4L, 4R and 22R  
REIL Rwys 3L, 9L, 9R and 21R  
HIRL all runways

EC-1, 20 MAR 2025 to 17 APR 2025

EC-1, 20 MAR 2025 to 17 APR 2025